



[Go to Product page](#)

Datasheet for ABIN2778902
anti-SNRPD2 antibody (N-Term)

3 Images

Overview

Quantity:	100 µL
Target:	SNRPD2
Binding Specificity:	N-Term
Reactivity:	Human, Mouse, Rat, Rabbit, Cow, Zebrafish (Danio rerio), Guinea Pig, Horse, Dog, Saccharomyces cerevisiae
Host:	Rabbit
Clonality:	Polyclonal
Conjugate:	This SNRPD2 antibody is un-conjugated
Application:	Western Blotting (WB)

Product Details

Immunogen:	The immunogen is a synthetic peptide directed towards the N terminal region of human SNRPD2
Sequence:	MSLLNPKPKSE MTPEELQKRE EEEFNTGPLS VLTQSVKNNT QVLINCRNNK
Predicted Reactivity:	Cow: 100%, Dog: 100%, Guinea Pig: 100%, Horse: 100%, Human: 100%, Mouse: 100%, Rabbit: 100%, Rat: 100%, Yeast: 77%, Zebrafish: 100%
Characteristics:	This is a rabbit polyclonal antibody against SNRPD2. It was validated on Western Blot using a cell lysate as a positive control.
Purification:	Affinity Purified

Target Details

Target:	SNRPD2
Alternative Name:	SNRPD2 (SNRPD2 Products)
Background:	<p>SNRPD2 belongs to the small nuclear ribonucleoprotein core protein family. It is required for pre-mRNA splicing and small nuclear ribonucleoprotein biogenesis. Multiple transcript variants encoding different isoforms have been found for this gene. The protein encoded by this gene belongs to the small nuclear ribonucleoprotein core protein family. It is required for pre-mRNA splicing and small nuclear ribonucleoprotein biogenesis. Alternative splicing occurs at this locus and two transcript variants encoding the same protein have been identified.</p> <p>Alias Symbols: SMD2, SNRPD1, Sm-D2</p> <p>Protein Interaction Partner: CEP70, FUS, CLNS1A, UBC, WWOX, SUZ12, EED, RNF2, EZH2, MAPRE1, YWHAH, SNRPE, PPP1CC, PAFAH1B1, RPL10AP3, LSM2, AMOTL2, CRLF3, GRB2, NPM1, CDK2, PAN2, METTL18, ZCCHC10, LSM6, OS9, UBL4A, VCAM1, SNRPF, ITGA4, IL7R, IFIT3, IFIT1, IFIT2, FN1, MAGOH, SMURF1, E</p> <p>Protein Size: 118</p>
Molecular Weight:	13 kDa
Gene ID:	6633
NCBI Accession:	NM_004597 , NP_004588
UniProt:	P62316
Pathways:	Ribonucleoprotein Complex Subunit Organization

Application Details

Application Notes:	Optimal working dilutions should be determined experimentally by the investigator.
Comment:	Antigen size: 118 AA
Restrictions:	For Research Use only

Handling

Format:	Liquid
Concentration:	Lot specific
Buffer:	Liquid. Purified antibody supplied in 1x PBS buffer with 0.09 % (w/v) sodium azide and 2 % sucrose.
Preservative:	Sodium azide

Handling

Precaution of Use:	This product contains Sodium azide: a POISONOUS AND HAZARDOUS SUBSTANCE which should be handled by trained staff only.
Handling Advice:	Avoid repeated freeze-thaw cycles.
Storage:	-20 °C
Storage Comment:	For short term use, store at 2-8°C up to 1 week. For long term storage, store at -20°C in small aliquots to prevent freeze-thaw cycles.

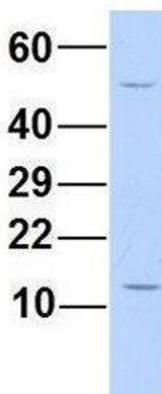
Images



Western Blotting

Image 1. WB Suggested Anti-SNRPD2 Antibody Titration: 0.2-1 ug/ml ELISA Titer: 1:312500 Positive Control: Jurkat cell lysate SNRPD2 is supported by BioGPS gene expression data to be expressed in Jurkat

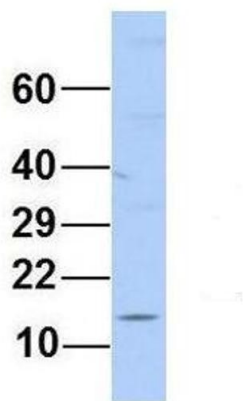
SNRPD2



Western Blotting

Image 2. Host: Rabbit Target Name: SNRPD2 Sample Type: Human 293T Antibody Dilution: 1.0ug/ml SNRPD2 is supported by BioGPS gene expression data to be expressed in HEK293T

SNRPD2



Western Blotting

Image 3. Host: Rabbit Target Name: SNRPD2 Sample Type: Human MCF7 Antibody Dilution: 1.0ug/ml SNRPD2 is supported by BioGPS gene expression data to be expressed in MCF7