

Datasheet for ABIN2778904
anti-TROVE2 antibody (N-Term)[Go to Product page](#)

2 Images

Overview

Quantity:	100 µL
Target:	TROVE2
Binding Specificity:	N-Term
Reactivity:	Human, Mouse, Rat, Dog, Guinea Pig, Cow, Horse, Rabbit
Host:	Rabbit
Clonality:	Polyclonal
Conjugate:	This TROVE2 antibody is un-conjugated
Application:	Western Blotting (WB), Immunohistochemistry (IHC)

Product Details

Immunogen:	The immunogen is a synthetic peptide directed towards the N terminal region of human TROVE2
Sequence:	QKLGLENAEA LIRLIEDGRG CEVIQEIKSF SQEGRTTKQE PMLFALAICS
Predicted Reactivity:	Cow: 93%, Dog: 93%, Guinea Pig: 93%, Horse: 86%, Human: 100%, Mouse: 93%, Rabbit: 93%, Rat: 93%
Characteristics:	This is a rabbit polyclonal antibody against TROVE2. It was validated on Western Blot and immunohistochemistry.
Purification:	Protein A purified

Target Details

Target:	TROVE2
---------	--------

Target Details

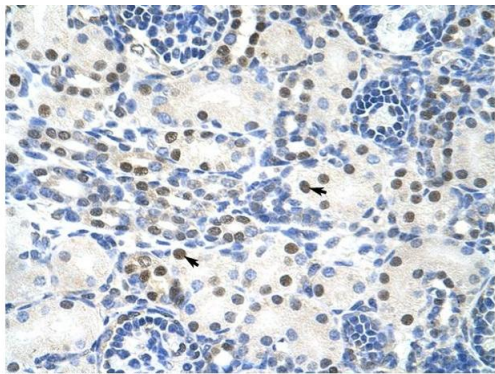
Alternative Name:	TROVE2 (TROVE2 Products)
Background:	<p>As a RNA-binding protein, TROVE2 binds to several small cytoplasmic RNA molecules known as Y RNAs. It may stabilize these RNAs from degradation.</p> <p>Alias Symbols: RO60, SSA2, RORNP</p> <p>Protein Interaction Partner: UBC, JMJD6, XP07, PUF60, FAF1, SEC23A, PRMT3, RANBP3, HIRIP3, HIST1H4A, SF1, UGP2, RPL24, PPM1G, PPAT, HSPA4, GFPT1, GART, GARS, CARS, METTL18, PAGR1, TEP1, SSB, TRIM21, CUL3, RAB11FIP5,</p> <p>Protein Size: 525</p>
Molecular Weight:	58 kDa
Gene ID:	6738
NCBI Accession:	NM_001042369 , NP_001035828
UniProt:	P10155

Application Details

Application Notes:	Optimal working dilutions should be determined experimentally by the investigator.
Comment:	Antigen size: 525 AA
Restrictions:	For Research Use only

Handling

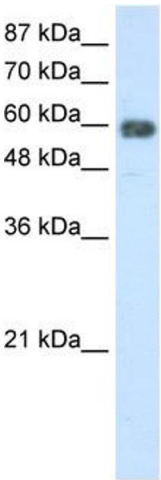
Format:	Liquid
Concentration:	Lot specific
Buffer:	Liquid. Purified antibody supplied in 1x PBS buffer with 0.09 % (w/v) sodium azide and 2 % sucrose.
Preservative:	Sodium azide
Precaution of Use:	This product contains Sodium azide: a POISONOUS AND HAZARDOUS SUBSTANCE which should be handled by trained staff only.
Handling Advice:	Avoid repeated freeze-thaw cycles.
Storage:	-20 °C
Storage Comment:	For short term use, store at 2-8°C up to 1 week. For long term storage, store at -20°C in small aliquots to prevent freeze-thaw cycles.



Rabbit Anti-TROVE2 Antibody
Catalog Number: ARP40534
Lot Number: QC10892
Paraffin Embedded Tissue: Human Kidney
Cells with Positive label: Epithelial cells of renal tubule (Indicated with Arrows)
Antibody Concentration: 4.0-8.0 μ g/ml
Magnification: 400X

Immunohistochemistry

Image 1. Rabbit Anti-TROVE2 Antibody Paraffin Embedded
Tissue: Human Kidney Cellular Data: Epithelial cells of renal
tubule Antibody Concentration: 4.0-8.0 μ g/ml Magnification:
400X



Western Blotting

Image 2. WB Suggested Anti-TROVE2 Antibody Titration:
2.5 μ g/ml Positive Control: HepG2 cell lysate