



[Go to Product page](#)

Datasheet for ABIN2778906

## anti-STAU1/Staufen antibody (N-Term)

### 2 Images

#### Overview

Quantity:	100 µL
Target:	STAU1/Staufen (STAU1)
Binding Specificity:	N-Term
Reactivity:	Human, Rat, Mouse, Horse, Cow, Guinea Pig, Dog, Rabbit, Zebrafish (Danio rerio)
Host:	Rabbit
Clonality:	Polyclonal
Conjugate:	This STAU1/Staufen antibody is un-conjugated
Application:	Western Blotting (WB)

#### Product Details

Immunogen:	The immunogen is a synthetic peptide directed towards the N terminal region of human STAU1
Sequence:	NFEVARESGP PHMKNFVTKV SVGEFVGEGE GKSKKISKKN AAI AVL EELK
Predicted Reactivity:	Cow: 100%, Dog: 100%, Guinea Pig: 100%, Horse: 100%, Human: 100%, Mouse: 100%, Rabbit: 100%, Rat: 100%, Zebrafish: 92%
Characteristics:	This is a rabbit polyclonal antibody against STAU1. It was validated on Western Blot using a cell lysate as a positive control.
Purification:	Affinity Purified

#### Target Details

Target:	STAU1/Staufen (STAU1)
---------	-----------------------

## Target Details

---

Alternative Name: STAU1 ([STAU1 Products](#))

---

Background: STAU1(Staufen) is a member of the family of double-stranded RNA (dsRNA)-binding proteins involved in the transport and/or localization of mRNAs to different subcellular compartments and/or organelles. These proteins are characterized by the presence of multiple dsRNA-binding domains which are required to bind RNAs having double-stranded secondary structures. The human homologue of staufen encoded by STAU, in addition contains a microtubule- binding domain similar to that of microtubule-associated protein 1B, and binds tubulin. Staufen is a member of the family of double-stranded RNA (dsRNA)-binding proteins involved in the transport and/or localization of mRNAs to different subcellular compartments and/or organelles. These proteins are characterized by the presence of multiple dsRNA-binding domains which are required to bind RNAs having double-stranded secondary structures. The human homologue of staufen encoded by STAU, in addition contains a microtubule- binding domain similar to that of microtubule-associated protein 1B, and binds tubulin. The STAU gene product has been shown to be present in the cytoplasm in association with the rough endoplasmic reticulum (RER), implicating this protein in the transport of mRNA via the microtubule network to the RER, the site of translation. Five transcript variants resulting from alternative splicing of STAU gene and encoding three isoforms have been described. Three of these variants encode the same isoform, however, differ in their 5'UTR.

Alias Symbols: STAU, FLJ25010

Protein Interaction Partner: LONRF1, GLRX3, ZMAT3, NXT1, SPRTN, MATR3, EIF4A3, NUP155, PRDX6, NPEPPS, DDX23, DDX21, AIFM1, INA, ATP6V0D1, SART1, RPL14, AP3D1, CPNE3, IQGAP1, PABPC4, EIF3D, EIF3B, EIF3A, PRKRA, KHSRP, IRS4, SLC25A11, SMC1A, PABPN1, DDX39B, TUBA1A, MOGS, YWHAZ, XPO1, V

Protein Size: 317

---

Molecular Weight: 35 kDa

---

Gene ID: 6780

---

NCBI Accession: [NM\\_001037328](#)

---

UniProt: [O95793](#)

---

Pathways: [Asymmetric Protein Localization](#)

---

## Application Details

---

Application Notes: Optimal working dilutions should be determined experimentally by the investigator.

---

Comment: Antigen size: 317 AA

---

## Application Details

Restrictions: For Research Use only

## Handling

Format: Liquid

Concentration: Lot specific

Buffer: Liquid. Purified antibody supplied in 1x PBS buffer with 0.09 % (w/v) sodium azide and 2 % sucrose.

Preservative: Sodium azide

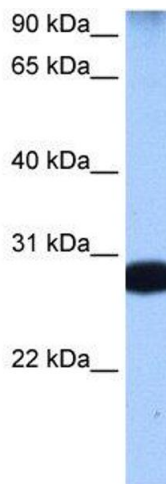
Precaution of Use: This product contains Sodium azide: a POISONOUS AND HAZARDOUS SUBSTANCE which should be handled by trained staff only.

Handling Advice: Avoid repeated freeze-thaw cycles.

Storage: -20 °C

Storage Comment: For short term use, store at 2-8°C up to 1 week. For long term storage, store at -20°C in small aliquots to prevent freeze-thaw cycles.

## Images



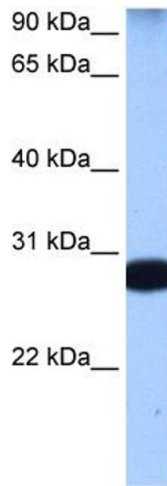
### Western Blotting

#### Image 1. WB Suggested Anti-STAU1

Antibody Titration: 0.2-1 µg/mL

Positive Control: 21\_B cell lysate

STAU1 is strongly supported by BioGPS gene expression data to be expressed in Human 721\_B cells



### Western Blotting

**Image 2.** WB Suggested Anti-STAU1 Antibody Titration: 0.2-1 ug/ml Positive Control: 721\_B cell lysate STAU1 is strongly supported by BioGPS gene expression data to be expressed in Human 721\_B cells