

Datasheet for ABIN2778909
anti-PRPF4 antibody (N-Term)[Go to Product page](#)

1 Image

Overview

Quantity:	100 µL
Target:	PRPF4
Binding Specificity:	N-Term
Reactivity:	Human, Mouse, Rat, Horse, Zebrafish (Danio rerio), Cow, Dog, Rabbit, Guinea Pig
Host:	Rabbit
Clonality:	Polyclonal
Conjugate:	This PRPF4 antibody is un-conjugated
Application:	Western Blotting (WB)

Product Details

Immunogen:	The immunogen is a synthetic peptide directed towards the N terminal region of human PRPF4
Sequence:	EVFEIEEHIS ERQAEVLAEF ERRKRARQIN VSTDDSEVKA CLRALGEPIT
Predicted Reactivity:	Cow: 100%, Dog: 100%, Guinea Pig: 100%, Horse: 100%, Human: 100%, Mouse: 100%, Rabbit: 100%, Rat: 100%, Zebrafish: 86%
Characteristics:	This is a rabbit polyclonal antibody against PRPF4. It was validated on Western Blot using a cell lysate as a positive control.
Purification:	Affinity Purified

Target Details

Target:	PRPF4
---------	-------

Target Details

Alternative Name:	PRPF4 (PRPF4 Products)
Background:	<p>The removal of introns from nuclear pre-mRNAs occurs on complexes called spliceosomes, which are made up of 4 small nuclear ribonucleoprotein (snRNP) particles and an undefined number of transiently associated splicing factors. PRPF4 is 1 of several prote</p> <p>Alias Symbols: HPRP4, HPRP4P, PRP4, Prp4p</p> <p>Protein Interaction Partner: CEP250, TUBGCP2, VCP, SUMO1, UBC, NEDD8, NHP2L1, EPS15L1, WBP4, PRPF4B, SOX2, U2AF1, SRSF1, FN1, PPIH, METTL18, gag-pol, GPKOW, PRPF3, SNRPB2, SNRPA1, RPS10, PLRG1, HNRNPU, APP, PATL1, TXNDC5, WRAP53, DGCR8, CDK12, PRPF19, LSM1, PRPF31, PRPF4, RNU6ATAC, R</p> <p>Protein Size: 522</p>
Molecular Weight:	58 kDa
Gene ID:	9128
NCBI Accession:	NM_004697 , NP_004688
UniProt:	O43172

Application Details

Application Notes:	Optimal working dilutions should be determined experimentally by the investigator.
Comment:	Antigen size: 522 AA
Restrictions:	For Research Use only

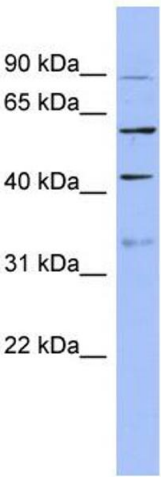
Handling

Format:	Liquid
Concentration:	Lot specific
Buffer:	Liquid. Purified antibody supplied in 1x PBS buffer with 0.09 % (w/v) sodium azide and 2 % sucrose.
Preservative:	Sodium azide
Precaution of Use:	This product contains Sodium azide: a POISONOUS AND HAZARDOUS SUBSTANCE which should be handled by trained staff only.
Handling Advice:	Avoid repeated freeze-thaw cycles.
Storage:	-20 °C

Handling

Storage Comment: For short term use, store at 2-8°C up to 1 week. For long term storage, store at -20°C in small aliquots to prevent freeze-thaw cycles.

Images



Western Blotting

Image 1. WB Suggested Anti-PRPF4 Antibody Titration: 0.2-1 ug/ml ELISA Titer: 1:1562500 Positive Control: NCI-H226 cell lysate