

Datasheet for ABIN2778910
anti-PRPF3 antibody (N-Term)



[Go to Product page](#)

1 Image

Overview

Quantity:	100 µL
Target:	PRPF3
Binding Specificity:	N-Term
Reactivity:	Human, Mouse, Rat, Dog, Cow, Horse, Rabbit, Guinea Pig
Host:	Rabbit
Clonality:	Polyclonal
Conjugate:	This PRPF3 antibody is un-conjugated
Application:	Western Blotting (WB)

Product Details

Immunogen:	The immunogen is a synthetic peptide directed towards the N terminal region of human PRPF3
Sequence:	VDKLFEAVEE GRSSRHSKSS SDRSRKRELK EVFGDDSEIS KESSGVKKRR
Predicted Reactivity:	Cow: 100%, Dog: 100%, Guinea Pig: 100%, Horse: 100%, Human: 100%, Mouse: 100%, Rabbit: 100%, Rat: 100%
Characteristics:	This is a rabbit polyclonal antibody against PRPF3. It was validated on Western Blot using a cell lysate as a positive control.
Purification:	Affinity Purified

Target Details

Target:	PRPF3
---------	-------

Target Details

Alternative Name:	PRPF3 (PRPF3 Products)
Background:	<p>The removal of introns from nuclear pre-mRNAs occurs on complexes called spliceosomes, which are made up of 4 small nuclear ribonucleoprotein (snRNP) particles and an undefined number of transiently associated splicing factors. PRPF3 is 1 of several proteins that associate with U4 and U6 snRNPs. The removal of introns from nuclear pre-mRNAs occurs on complexes called spliceosomes, which are made up of 4 small nuclear ribonucleoprotein (snRNP) particles and an undefined number of transiently associated splicing factors. PRPF3 is 1 of several proteins that associate with U4 and U6 snRNPs.[supplied by OMIM].</p> <p>Alias Symbols: PRP3, RP18, HPRP3, Prp3p, HPRP3P</p> <p>Protein Interaction Partner: FAM9B, TRIM39, SART3, CEP250, AURKB, UBC, TUBG1, LIN28A, MEPCCE, WWOX, WBP4, TARDBP, MMS19, FRA10AC1, SNIP1, NKAP, CTNNBL1, ZCCHC10, U2AF2, SF3B2, SLU7, SMNDC1, RBM39, PRPF3, PCBP1, MFAP1, PATL1, RBM25, NOP58, LSM1, PABPC1, PRPF6, NNT, SRRM2, SUPT16H, SF3A</p> <p>Protein Size: 683</p>
Molecular Weight:	75 kDa
Gene ID:	9129
NCBI Accession:	NM_004698 , NP_004689
UniProt:	O43395

Application Details

Application Notes:	Optimal working dilutions should be determined experimentally by the investigator.
Comment:	Antigen size: 683 AA
Restrictions:	For Research Use only

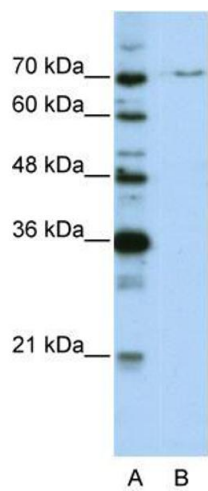
Handling

Format:	Liquid
Concentration:	Lot specific
Buffer:	Liquid. Purified antibody supplied in 1x PBS buffer with 0.09 % (w/v) sodium azide and 2 % sucrose.
Preservative:	Sodium azide
Precaution of Use:	This product contains Sodium azide: a POISONOUS AND HAZARDOUS SUBSTANCE which

Handling

	should be handled by trained staff only.
Handling Advice:	Avoid repeated freeze-thaw cycles.
Storage:	-20 °C
Storage Comment:	For short term use, store at 2-8°C up to 1 week. For long term storage, store at -20°C in small aliquots to prevent freeze-thaw cycles.

Images



Western Blotting

Image 1. WB Suggested Anti-PRPF3 Antibody Titration: 0.2-1 ug/ml ELISA Titer: 1:62500 Positive Control: HepG2 cell lysate