

Datasheet for ABIN2778914

anti-SRSF11 antibody (C-Term)



[Go to Product page](#)

1 Image

1 Publication

Overview

Quantity:	100 µL
Target:	SRSF11
Binding Specificity:	C-Term
Reactivity:	Human, Mouse, Rat, Cow, Pig, Horse, Dog
Host:	Rabbit
Clonality:	Polyclonal
Conjugate:	This SRSF11 antibody is un-conjugated
Application:	Western Blotting (WB)

Product Details

Immunogen:	The immunogen is a synthetic peptide directed towards the C terminal region of human SFRS11
Sequence:	KKKSKDKEKD RERKSESDKD VKQVTRDYDE EEQGYDSEKE KKEEKKPIET
Predicted Reactivity:	Cow: 93%, Dog: 100%, Horse: 100%, Human: 100%, Mouse: 93%, Pig: 93%, Rat: 100%
Characteristics:	This is a rabbit polyclonal antibody against SFRS11. It was validated on Western Blot using a cell lysate as a positive control.
Purification:	Affinity Purified

Target Details

Target:	SRSF11
---------	--------

Target Details

Alternative Name:	SFRS11 (SRSF11 Products)
Background:	<p>SFRS11 is 54-kD nuclear protein that contains an arginine/serine-rich region similar to segments found in pre-mRNA splicing factors. Although the function of this protein is not yet known, structure and immunolocalization data suggest that it may play a role in pre-mRNA processing. This gene encodes 54-kD nuclear protein that contains an arginine/serine-rich region similar to segments found in pre-mRNA splicing factors. Although the function of this protein is not yet known, structure and immunolocalization data suggest that it may play a role in pre-mRNA processing.</p> <p>Alias Symbols: DKFZp686M13204, dJ677H15.2, p54, NET2, SFRS11</p> <p>Protein Interaction Partner: PUF60, TANK, RBM39, SDCBP, ARL6IP4, GATC, SREK1, HYI, UBC, MDM2, PIN1, THAP11, ETS1, DDOST, CSNK2A1, CDK6, VCP, SON, SNRPA, SRSF7, SRSF3, S100A9, PPP1CA, NHP2L1, MSH2, IK, HNRNPU, HNRNPK, FLNA, TFPI, VASN, TRIM55, AGMAT, SHCBP1, SMU1, SF3B6, TRMT112, PRPF</p> <p>Protein Size: 484</p>
Molecular Weight:	53 kDa
Gene ID:	9295
NCBI Accession:	NM_004768 , NP_004759
UniProt:	Q05519

Application Details

Application Notes:	Optimal working dilutions should be determined experimentally by the investigator.
Comment:	Antigen size: 484 AA
Restrictions:	For Research Use only

Handling

Format:	Liquid
Concentration:	Lot specific
Buffer:	Liquid. Purified antibody supplied in 1x PBS buffer with 0.09 % (w/v) sodium azide and 2 % sucrose.
Preservative:	Sodium azide
Precaution of Use:	This product contains Sodium azide: a POISONOUS AND HAZARDOUS SUBSTANCE which

Handling

should be handled by trained staff only.

Handling Advice: Avoid repeated freeze-thaw cycles.

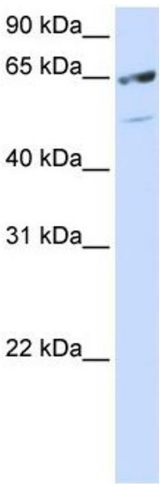
Storage: -20 °C

Storage Comment: For short term use, store at 2-8°C up to 1 week. For long term storage, store at -20°C in small aliquots to prevent freeze-thaw cycles.

Publications

Product cited in: Holmberg, Ingner, Johansson, Leander, Hjalt: "PITX2 gain-of-function induced defects in mouse forelimb development." in: **BMC developmental biology**, Vol. 8, pp. 25, (2008) ([PubMed](#)).

Images



Western Blotting

Image 1. WB Suggested Anti-SFRS11 Antibody Titration: 0.2-1 ug/ml ELISA Titer: 1:62500 Positive Control: Hela cell lysate There is BioGPS gene expression data showing that SRSF11 is expressed in Hela