

Datasheet for ABIN2778918
anti-RBM39 antibody (N-Term)



[Go to Product page](#)

1 Image

Overview

Quantity:	100 µL
Target:	RBM39
Binding Specificity:	N-Term
Reactivity:	Human, Mouse, Rat, Dog, Cow, Horse, Pig, Rabbit, Zebrafish (Danio rerio), Guinea Pig
Host:	Rabbit
Clonality:	Polyclonal
Conjugate:	This RBM39 antibody is un-conjugated
Application:	Western Blotting (WB)

Product Details

Immunogen:	The immunogen is a synthetic peptide directed towards the N terminal region of human RBM39
Sequence:	ADDIDIEAML EAPYKKDENK LSSANGHEER SKKRKKSRSR SRSHERKRSK
Predicted Reactivity:	Cow: 100%, Dog: 100%, Guinea Pig: 93%, Horse: 100%, Human: 100%, Mouse: 100%, Pig: 100%, Rabbit: 100%, Rat: 100%, Zebrafish: 86%
Characteristics:	This is a rabbit polyclonal antibody against RBM39. It was validated on Western Blot using a cell lysate as a positive control.
Purification:	Affinity Purified

Target Details

Target:	RBM39
---------	-------

Target Details

Alternative Name:	RBM39 (RBM39 Products)
Background:	<p>RBM39 is an RNA binding protein and possible splicing factor. It is found in the nucleus, where it colocalizes with core spliceosomal proteins. Studies of a mouse protein with high sequence similarity to this protein suggest that this protein may act as a transcriptional coactivator for JUN/AP-1 and estrogen receptors. The protein encoded by this gene is an RNA binding protein and possible splicing factor. The encoded protein is found in the nucleus, where it colocalizes with core spliceosomal proteins. Studies of a mouse protein with high sequence similarity to this protein suggest that this protein may act as a transcriptional coactivator for JUN/AP-1 and estrogen receptors. Multiple transcript variants encoding different isoforms have been observed for this gene.</p> <p>Alias Symbols: CAPER, CAPERalpha, CC1.3, DKFZp781C0423, FLJ44170, HCC1, RNPC2, FSAP59</p> <p>Protein Interaction Partner: RP9P, KRTAP12-2, SREK1IP1, FAM200A, AK8, HOMEZ, PRPF40A, C11orf57, THAP1, BANP, ZCCHC10, ARL6IP4, KIAA0907, SAP18, SF3B4, PPIG, SRSF11, ZBTB22, UBC, TP53, MLX, SRPK2, SP100, SDCBP, REL, GOLGA2, PHC2, CLK2, SPRTN, SUMO2, SUMO3, MDM2, RPA3, RPA2, RPA1, WWOX</p> <p>Protein Size: 524</p>
Molecular Weight:	59 kDa
Gene ID:	9584
NCBI Accession:	NM_004902 , NP_004893
UniProt:	Q14498

Application Details

Application Notes:	Optimal working dilutions should be determined experimentally by the investigator.
Comment:	Antigen size: 524 AA
Restrictions:	For Research Use only

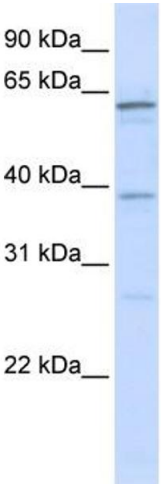
Handling

Format:	Liquid
Concentration:	Lot specific
Buffer:	Liquid. Purified antibody supplied in 1x PBS buffer with 0.09 % (w/v) sodium azide and 2 % sucrose.

Handling

Preservative:	Sodium azide
Precaution of Use:	This product contains Sodium azide: a POISONOUS AND HAZARDOUS SUBSTANCE which should be handled by trained staff only.
Handling Advice:	Avoid repeated freeze-thaw cycles.
Storage:	-20 °C
Storage Comment:	For short term use, store at 2-8°C up to 1 week. For long term storage, store at -20°C in small aliquots to prevent freeze-thaw cycles.

Images



Western Blotting

Image 1. WB Suggested Anti-RBM39 Antibody Titration: 0.2-1 ug/ml ELISA Titer: 1:2500 Positive Control: HeLa cell lysate
RBM39 is supported by BioGPS gene expression data to be expressed in HeLa