

Datasheet for ABIN2778924
anti-SFPQ antibody (Middle Region)

3 Images

[Go to Product page](#)

Overview

Quantity:	100 µL
Target:	SFPQ
Binding Specificity:	Middle Region
Reactivity:	Human, Mouse, Rat, Cow, Dog, Horse, Guinea Pig, Rabbit, Zebrafish (Danio rerio)
Host:	Rabbit
Clonality:	Polyclonal
Conjugate:	This SFPQ antibody is un-conjugated
Application:	Western Blotting (WB), Immunohistochemistry (IHC)

Product Details

Immunogen:	The immunogen is a synthetic peptide directed towards the middle region of human SFPQ
Sequence:	PVIVEPLEQL DDEDGLPEKL AQKNPMYQKE RETPPRFAQH GTFEYEYSQR
Predicted Reactivity:	Cow: 100%, Dog: 100%, Guinea Pig: 100%, Horse: 100%, Human: 100%, Mouse: 100%, Rabbit: 100%, Rat: 100%, Zebrafish: 92%
Characteristics:	This is a rabbit polyclonal antibody against SFPQ. It was validated on Western Blot and immunohistochemistry.
Purification:	Protein A purified

Target Details

Target:	SFPQ
---------	------

Target Details

Alternative Name:	SFPQ (SFPQ Products)
Background:	<p>SFPQ is DNA- and RNA binding protein. It is essential pre-mRNA splicing factor required early in spliceosome formation and for splicing catalytic step II, probably as an heteromer with NONO. It binds to pre-mRNA in spliceosome C complex, and specifically binds to intronic polypyrimidine tracts. It interacts with U5 snRNA. It may be involved in a pre-mRNA coupled splicing and polyadenylation process as component of a snRNP-free complex with SNRPA/U1A. SFPQ may be involved in homologous DNA pairing. SFPQ is involved in transcriptional regulation. It binds the DNA sequence 5'-CTGAGTC-3' in the insulin-like growth factor response element (IGFRE) and inhibits IGF-I-stimulated transcriptional activity.</p> <p>Alias Symbols: POMP100, PSF</p> <p>Protein Interaction Partner: SNRPA, PTBP1, NONO, HDAC2, FUS, HUWE1, UBC, SUMO2, MDM2, STAU1, RPA3, RPA2, RPA1, ERG, ASB18, ASB12, WWOX, ASB3, EED, rev, TIMM23B, APBB1, PIN1, WBP4, TCERG1, GAS7, PRPF40A, PARK2, UBD, CD81, PAN2, RNF43, WHSC1, VCAM1, SMAD5, ITGA4, FN1, CSNK2A1, BTK, DNA</p> <p>Protein Size: 707</p>
Molecular Weight:	78 kDa
Gene ID:	6421
NCBI Accession:	NM_005066 , NP_005057
UniProt:	P23246

Application Details

Application Notes:	Optimal working dilutions should be determined experimentally by the investigator.
Comment:	Antigen size: 707 AA
Restrictions:	For Research Use only

Handling

Format:	Liquid
Concentration:	Lot specific
Buffer:	Liquid. Purified antibody supplied in 1x PBS buffer with 0.09 % (w/v) sodium azide and 2 % sucrose.
Preservative:	Sodium azide

Handling

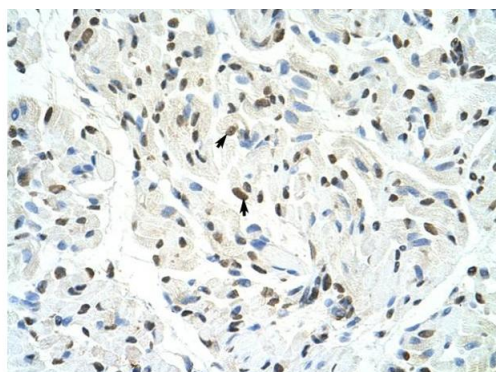
Precaution of Use:	This product contains Sodium azide: a POISONOUS AND HAZARDOUS SUBSTANCE which should be handled by trained staff only.
Handling Advice:	Avoid repeated freeze-thaw cycles.
Storage:	-20 °C
Storage Comment:	For short term use, store at 2-8°C up to 1 week. For long term storage, store at -20°C in small aliquots to prevent freeze-thaw cycles.

Images



Western Blotting

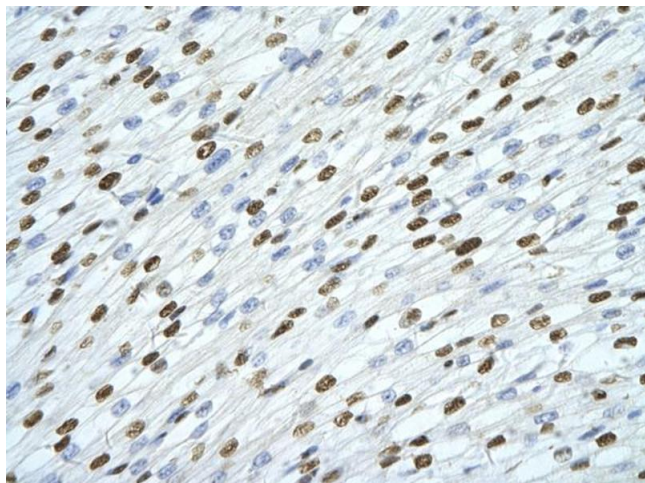
Image 1. WB Suggested Anti-SFPQ Antibody Titration: 5.0ug/ml Positive Control: Jurkat cell lysate SFPQ is strongly supported by BioGPS gene expression data to be expressed in Human Jurkat cells



Rabbit Anti-SFPQ Antibody
Catalog Number: ARP40571
Lot Number: QC10211
Paraffin Embedded Tissue: Human Muscle
Cells with Positive label: Skeletal muscle cells (Indicated with Arrows)
Antibody Concentration: 4.0-8.0 µg/ml
Magnification: 400X

Immunohistochemistry

Image 2. Rabbit Anti-SFPQ Antibody Paraffin Embedded Tissue: Human Muscle Cellular Data: Skeletal muscle cells
Antibody Concentration: 4.0-8.0 ug/ml Magnification: 400X



Immunohistochemistry

Image 3. Rabbit Anti-SFPQ antibody Paraffin Embedded
Tissue: Human Heart cell Cellular Data: cardiac cell Antibody
Concentration: 4.0-8.0 ug/ml Magnification: 400X