

Datasheet for ABIN2778925
anti-SFPQ antibody (N-Term)

5 Images

[Go to Product page](#)

Overview

Quantity:	100 µL
Target:	SFPQ
Binding Specificity:	N-Term
Reactivity:	Human, Mouse, Rat, Cow, Dog
Host:	Rabbit
Clonality:	Polyclonal
Conjugate:	This SFPQ antibody is un-conjugated
Application:	Western Blotting (WB), Immunohistochemistry (IHC)

Product Details

Immunogen:	The immunogen is a synthetic peptide directed towards the N terminal region of human SFPQ
Sequence:	VPGGPGPKQ GPGGGPKGG KMPGGPKPGG GGLSTPGGH PKPPHRGGGE
Predicted Reactivity:	Cow: 100%, Dog: 100%, Human: 100%, Mouse: 79%, Rat: 79%
Characteristics:	This is a rabbit polyclonal antibody against SFPQ. It was validated on Western Blot and immunohistochemistry.
Purification:	Protein A purified

Target Details

Target:	SFPQ
Alternative Name:	SFPQ (SFPQ Products)

Target Details

Background:	<p>SFPQ is DNA- and RNA binding protein. It is essential pre-mRNA splicing factor required early in spliceosome formation and for splicing catalytic step II, probably as an heteromer with NONO. It binds to pre-mRNA in spliceosome C complex, and specifically binds to intronic polypyrimidine tracts. It interacts with U5 snRNA. It may be involved in a pre-mRNA coupled splicing and polyadenylation process as component of a snRNP-free complex with SNRPA/U1A. SFPQ may be involved in homologous DNA pairing. SFPQ is involved in transcriptional regulation. It binds the DNA sequence 5'-CTGAGTC-3' in the insulin-like growth factor response element (IGFRE) and inhibits IGF-I-stimulated transcriptional activity.</p> <p>Alias Symbols: PSF, POMP100</p> <p>Protein Interaction Partner: SNRPA, PTBP1, NONO, HDAC2, FUS, HUWE1, UBC, SUMO2, MDM2, STAU1, RPA3, RPA2, RPA1, ERG, ASB18, ASB12, WWOX, ASB3, EED, rev, TIMM23B, APBB1, PIN1, WBP4, TCERG1, GAS7, PRPF40A, PARK2, UBD, CD81, PAN2, RNF43, WHSC1, VCAM1, SMAD5, ITGA4, FN1, CSNK2A1, BTK, DNA</p> <p>Protein Size: 707</p>
-------------	--

Molecular Weight:	78 kDa
-------------------	--------

Gene ID:	6421
----------	------

NCBI Accession:	NM_005066 , NP_005057
-----------------	---

UniProt:	P23246
----------	------------------------

Application Details

Application Notes:	Optimal working dilutions should be determined experimentally by the investigator.
--------------------	--

Comment:	Antigen size: 707 AA
----------	----------------------

Restrictions:	For Research Use only
---------------	-----------------------

Handling

Format:	Liquid
---------	--------

Concentration:	Lot specific
----------------	--------------

Buffer:	Liquid. Purified antibody supplied in 1x PBS buffer with 0.09 % (w/v) sodium azide and 2 % sucrose.
---------	---

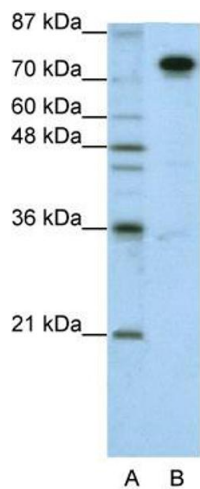
Preservative:	Sodium azide
---------------	--------------

Precaution of Use:	This product contains Sodium azide: a POISONOUS AND HAZARDOUS SUBSTANCE which
--------------------	---

Handling

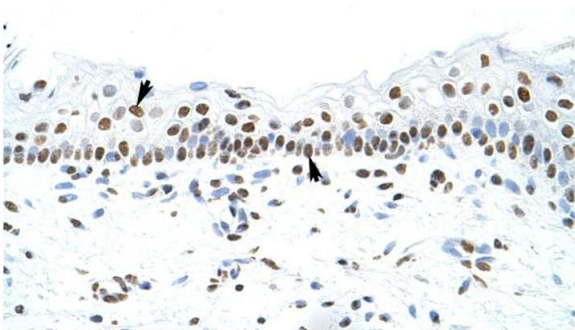
	should be handled by trained staff only.
Handling Advice:	Avoid repeated freeze-thaw cycles.
Storage:	-20 °C
Storage Comment:	For short term use, store at 2-8°C up to 1 week. For long term storage, store at -20°C in small aliquots to prevent freeze-thaw cycles.

Images



Western Blotting

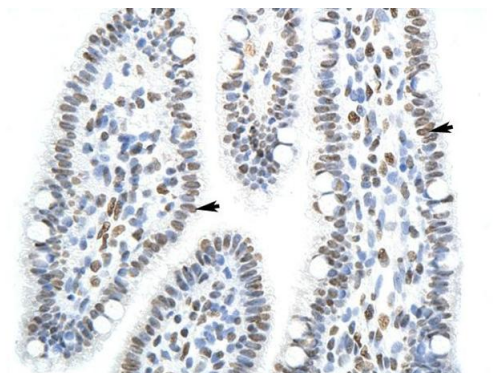
Image 1. WB Suggested Anti-SFPQ Antibody Titration: 1.25ug/ml ELISA Titer: 1:12500 Positive Control: HepG2 cell lysate. SFPQ is strongly supported by BioGPS gene expression data to be expressed in HepG2



Immunohistochemistry

Image 2. Rabbit Anti-SFPQ Antibody Paraffin Embedded Tissue: Human Skin Cellular Data: Squamous epithelial cells Antibody Concentration: 4.0-8.0 ug/ml Magnification: 400X

Rabbit Anti-SFPQ Antibody
Catalog Number: ARP40572
Lot Number: QC9721
Paraffin Embedded Tissue: Human Skin
Cells with Positive label: Squamous epithelial cells (Indicated with Arrows)
Antibody Concentration: 4.0-8.0 µg/ml
Magnification: 400X



Rabbit Anti-SFPQ Antibody
Catalog Number: ARP40572
Lot Number: QC9721
Paraffin Embedded Tissue: Human Intestine
Cells with Positive label: Epithelial cells of intestinal villus (Indicated with Arrows)
Antibody Concentration: 4.0-8.0 µg/ml
Magnification: 400X

Immunohistochemistry

Image 3. Rabbit Anti-SFPQ Antibody Paraffin Embedded Tissue: Human Intestine Cellular Data: Epithelial cells of intestinal villus Antibody Concentration: 4.0-8.0 µg/ml Magnification: 400X

Please check the [product details page](#) for more images. Overall 5 images are available for ABIN2778925.