

Datasheet for ABIN2778929
anti-RBM8A antibody (N-Term)[Go to Product page](#)

4 Images

Overview

Quantity:	100 µL
Target:	RBM8A
Binding Specificity:	N-Term
Reactivity:	Human, Rat, Mouse, Zebrafish (Danio rerio), Cow, Dog, Horse, Pig, Rabbit
Host:	Rabbit
Clonality:	Polyclonal
Conjugate:	This RBM8A antibody is un-conjugated
Application:	Western Blotting (WB), Immunohistochemistry (IHC)

Product Details

Immunogen:	The immunogen is a synthetic peptide directed towards the N terminal region of human RBM8A
Sequence:	LHEAGGEDFA MDEDGDESIH KLKEKAKKRK GRGFGSEEGS RARMREDYDS
Predicted Reactivity:	Cow: 100%, Dog: 100%, Horse: 100%, Human: 100%, Mouse: 100%, Pig: 82%, Rabbit: 82%, Rat: 100%, Zebrafish: 100%
Characteristics:	This is a rabbit polyclonal antibody against RBM8A. It was validated on Western Blot and immunohistochemistry.
Purification:	Protein A purified

Target Details

Target:	RBM8A
---------	-------

Target Details

Alternative Name: RBM8A ([RBM8A Products](#))

Background: RBM8A is a protein with a conserved RNA-binding motif. The protein is found predominantly in the nucleus, although it is also present in the cytoplasm. It is preferentially associated with mRNAs produced by splicing, including both nuclear mRNAs and newly exported cytoplasmic mRNAs. It is thought that the protein remains associated with spliced mRNAs as a tag to indicate where introns had been present, thus coupling pre- and post-mRNA splicing events. This gene encodes a protein with a conserved RNA-binding motif. The protein is found predominantly in the nucleus, although it is also present in the cytoplasm. It is preferentially associated with mRNAs produced by splicing, including both nuclear mRNAs and newly exported cytoplasmic mRNAs. It is thought that the protein remains associated with spliced mRNAs as a tag to indicate where introns had been present, thus coupling pre- and post-mRNA splicing events. Previously, it was thought that two genes encode this protein, RBM8A and RBM8B, it is now thought that the RBM8B locus is a pseudogene. Two alternative start codons result in two forms of the protein, and this gene also uses multiple polyadenylation sites.

Alias Symbols: Y14, RBM8, ZNRP, RBM8B, ZRNP1, BOV-1A, BOV-1B, BOV-1C, MDS014

Protein Interaction Partner: MAGOHB, MAGOH, UBC, SUZ12, RNF2, PARK2, SRPK2, SRPK1, FBXO25, tat, UPF3B, SMG9, SMG8, PABPC1, UPF2, SMG5, SMG1, RUVBL2, RBM8A, SMG7, EIF4A3, TTI1, RUVBL1, UPF1, NCBP2, TOE1, SF3B2, RPS16, RPL11, HBB, GSPT1, ZFP36L1, UNC119B, SLIRP, LSM2, CIAPIN1, TFCEP2L1,

Protein Size: 174

Molecular Weight: 19 kDa

Gene ID: 9939

NCBI Accession: [NM_005105](#), [NP_005096](#)

UniProt: [Q9Y5S9](#)

Application Details

Application Notes: Optimal working dilutions should be determined experimentally by the investigator.

Comment: Antigen size: 174 AA

Restrictions: For Research Use only

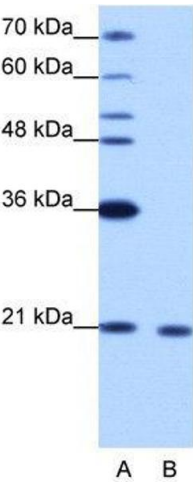
Handling

Format: Liquid

Handling

Concentration:	Lot specific
Buffer:	Liquid. Purified antibody supplied in 1x PBS buffer with 0.09 % (w/v) sodium azide and 2 % sucrose.
Preservative:	Sodium azide
Precaution of Use:	This product contains Sodium azide: a POISONOUS AND HAZARDOUS SUBSTANCE which should be handled by trained staff only.
Handling Advice:	Avoid repeated freeze-thaw cycles.
Storage:	-20 °C
Storage Comment:	For short term use, store at 2-8°C up to 1 week. For long term storage, store at -20°C in small aliquots to prevent freeze-thaw cycles.

Images



Western Blotting

Image 1. WB Suggested Anti-RBM8A

Antibody Titration: 1.25 µg/mL

Positive Control: Jurkat cell lysate

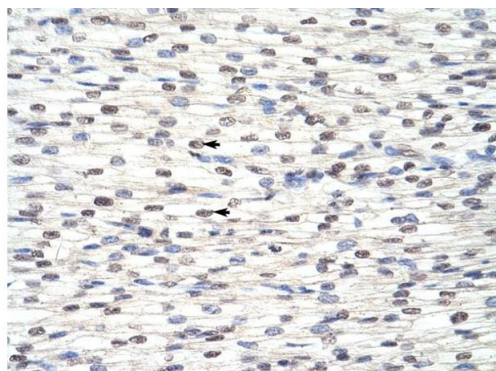
There is BioGPS gene expression data showing that RBM8A is expressed in Jurkat

Immunohistochemistry

Image 2. Rabbit Anti-RBM8A Antibody Paraffin Embedded

Tissue: Human alveolar cell Cellular Data: Epithelial cells of renal tubule Antibody Concentration: 4.0-8.0 ug/ml Magnification: 400X





Rabbit Anti-RBM8A Antibody
Catalog Number: ARP40576
Lot Number: QC10214
Paraffin Embedded Tissue: Human Heart
Cells with Positive label: Myocardial cells (Indicated with Arrows)
Antibody Concentration: 4.0-8.0 µg/ml
Magnification: 400X

Immunohistochemistry

Image 3. Rabbit Anti-RBM8A Antibody Paraffin Embedded
Tissue: Human Heart Cellular Data: Myocardial cells
Antibody Concentration: 4.0-8.0 ug/ml Magnification: 400X

Please check the [product details page](#) for more images. Overall 4 images are available for ABIN2778929.