

Datasheet for ABIN2778931
anti-THOC1 antibody (C-Term)[Go to Product page](#)

7 Images

Overview

Quantity:	100 µL
Target:	THOC1
Binding Specificity:	C-Term
Reactivity:	Human, Mouse, Rat, Dog, Horse, Rabbit, Guinea Pig, Cow, Zebrafish (Danio rerio), Saccharomyces cerevisiae
Host:	Rabbit
Clonality:	Polyclonal
Conjugate:	This THOC1 antibody is un-conjugated
Application:	Western Blotting (WB), Immunohistochemistry (IHC)

Product Details

Immunogen:	The immunogen is a synthetic peptide directed towards the C terminal region of human THOC1
Sequence:	TNQQFKSLQE YLENMVIKLA KELPPPSEEI KTGEDEDEED NDALLKENES
Predicted Reactivity:	Cow: 100%, Dog: 100%, Guinea Pig: 100%, Horse: 100%, Human: 100%, Mouse: 100%, Rabbit: 100%, Rat: 100%, Yeast: 77%, Zebrafish: 77%
Characteristics:	This is a rabbit polyclonal antibody against THOC1. It was validated on Western Blot and immunohistochemistry.
Purification:	Affinity Purified

Target Details

Target:	THOC1
---------	-------

Target Details

Alternative Name:	THOC1 (THOC1 Products)
Background:	<p>THOC1 is part of the TREX (transcription/export) complex, which includes TEX1, THO2, ALY, and UAP56. HPR1 is part of the TREX (transcription/export) complex, which includes TEX1 (MIM 606929), THO2 (MIM 300395), ALY (MIM 604171), and UAP56 (MIM 606390). [supplied by OMIM]. Publication Note: This RefSeq record includes a subset of the publications that are available for this gene. Please see the Entrez Gene record to access additional publications.</p> <p>Alias Symbols: HPR1, P84, P84N5</p> <p>Protein Interaction Partner: USHBP1, MOAP1, TRIM54, RABGEF1, THOC2, SUMO2, UBC, SUMO1, RPA3, RPA2, RPA1, RNF2, FRA10AC1, WDR77, SAP30BP, SF3B2, THOC1, THOC5, IK, DHX8, UBR7, TRMT112, SF3B1, RRP9, USP13, DDX39B, UTRN, TPM3, TPM1, VPS53, ZNF830, THOC3, THOC7, THOC6, XPO4, ZC3H15, ZCCHC</p> <p>Protein Size: 657</p>
Molecular Weight:	76 kDa
Gene ID:	9984
NCBI Accession:	NM_005131 , NP_005122
UniProt:	Q96FV9

Application Details

Application Notes:	Optimal working dilutions should be determined experimentally by the investigator.
Comment:	Antigen size: 657 AA
Restrictions:	For Research Use only

Handling

Format:	Liquid
Concentration:	Lot specific
Buffer:	Liquid. Purified antibody supplied in 1x PBS buffer with 0.09 % (w/v) sodium azide and 2 % sucrose.
Preservative:	Sodium azide
Precaution of Use:	This product contains Sodium azide: a POISONOUS AND HAZARDOUS SUBSTANCE which should be handled by trained staff only.
Handling Advice:	Avoid repeated freeze-thaw cycles.

Handling

Storage: -20 °C

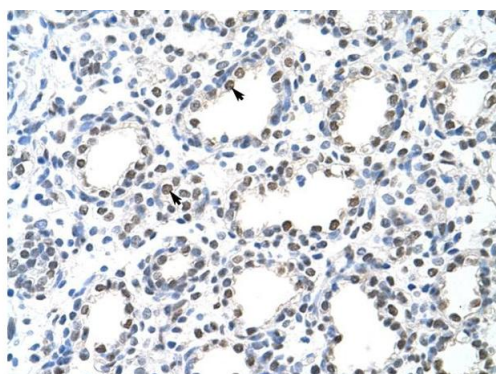
Storage Comment: For short term use, store at 2-8°C up to 1 week. For long term storage, store at -20°C in small aliquots to prevent freeze-thaw cycles.

Images



Western Blotting

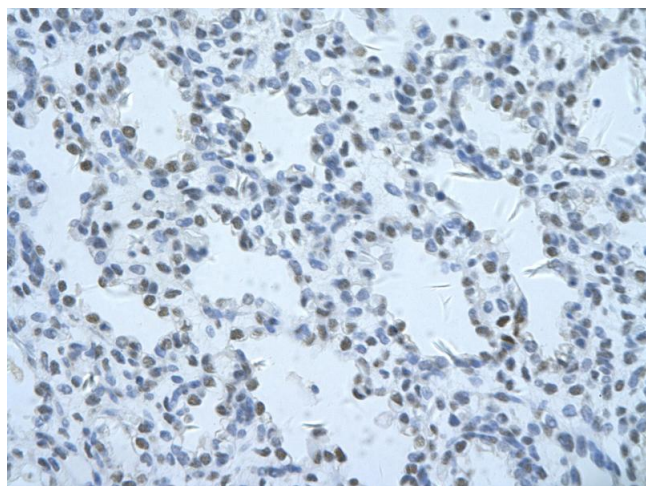
Image 1. WB Suggested Anti-THOC1 Antibody Titration: 0.2-1 ug/ml ELISA Titer: 1:312500 Positive Control: HepG2 cell lysate



Rabbit Anti-THOC1 Antibody
Catalog Number: ARP40578
Lot Number: QC10610
Paraffin Embedded Tissue: Human Lung
Cells with Positive label: Alveolar cells (Indicated with Arrows)
Antibody Concentration: 4.0-8.0 µg/ml
Magnification: 400X

Immunohistochemistry

Image 2. Rabbit Anti-THOC1 Antibody Paraffin Embedded Tissue: Human Lung Cellular Data: Alveolar cells Antibody Concentration: 4.0-8.0 ug/ml Magnification: 400X



Immunohistochemistry

Image 3. Rabbit Anti-THOC1 Antibody Paraffin Embedded Tissue: Human alveolar cell Cellular Data: Epithelial cells of renal tubule Antibody Concentration: 4.0-8.0 ug/ml Magnification: 400X

Please check the [product details page](#) for more images. Overall 7 images are available for ABIN2778931.