

Datasheet for ABIN2778935
anti-Nucleolin antibody (N-Term)



[Go to Product page](#)

4 Images

1 Publication

Overview

Quantity:	100 µL
Target:	Nucleolin (NCL)
Binding Specificity:	N-Term
Reactivity:	Human, Mouse, Rat, Cow, Dog, Pig, Rabbit, Horse, Saccharomyces cerevisiae, Zebrafish (Danio rerio)
Host:	Rabbit
Clonality:	Polyclonal
Conjugate:	This Nucleolin antibody is un-conjugated
Application:	Western Blotting (WB), Immunohistochemistry (IHC)

Product Details

Immunogen:	The immunogen is a synthetic peptide directed towards the N terminal region of human NCL
Sequence:	GKALVATPGK KGAAIPAKGA KNGKNAKKED SDEEEDDDSE EDEEDEDDED
Predicted Reactivity:	Cow: 87%, Dog: 93%, Horse: 93%, Human: 100%, Mouse: 91%, Pig: 86%, Rabbit: 77%, Rat: 93%, Yeast: 83%, Zebrafish: 85%
Characteristics:	This is a rabbit polyclonal antibody against NCL. It was validated on Western Blot and immunohistochemistry.
Purification:	Affinity Purified

Target Details

Target:	Nucleolin (NCL)
---------	-----------------

Target Details

Alternative Name: [NCL \(NCL Products\)](#)

Background: Nucleolin (NCL), a eukaryotic nucleolar phosphoprotein, is involved in the synthesis and maturation of ribosomes. It is located mainly in dense fibrillar regions of the nucleolus. Nucleolin (NCL), a eukaryotic nucleolar phosphoprotein, is involved in the synthesis and maturation of ribosomes. It is located mainly in dense fibrillar regions of the nucleolus. Human NCL gene consists of 14 exons with 13 introns and spans approximately 11kb. The intron 11 of the NCL gene encodes a small nucleolar RNA, termed U20. Nucleolin (NCL), a eukaryotic nucleolar phosphoprotein, is involved in the synthesis and maturation of ribosomes. It is located mainly in dense fibrillar regions of the nucleolus. Human NCL gene consists of 14 exons with 13 introns and spans approximately 11kb. The intron 11 of the NCL gene encodes a small nucleolar RNA, termed U20.

Alias Symbols: C23

Protein Interaction Partner: HUWE1, PIK3R1, PA2G4, NCL, HNRNPD, AURKA, MDM2, NFE4, CDKN1A, ADAP1, STAU1, ADAP2, UBC, NUP62, ZBTB1, ARFGEF1, RPA3, RPA2, RPA1, ERG, RNF2, SUZ12, EED, EZH2, BMI1, NPM3, EIF3G, XRCC5, PLOD2, NCBP1, MCM2, LMNA, PRMT1, HNRNPK, KCTD12, DNM1, ACLY, SRPK3, TAR

Protein Size: 710

Molecular Weight: 78 kDa

Gene ID: 4691

NCBI Accession: [NM_005381](#), [NP_005372](#)

UniProt: [P19338](#)

Pathways: [Ribonucleoprotein Complex Subunit Organization](#)

Application Details

Application Notes: Optimal working dilutions should be determined experimentally by the investigator.

Comment: Antigen size: 710 AA

Restrictions: For Research Use only

Handling

Format: Liquid

Concentration: Lot specific

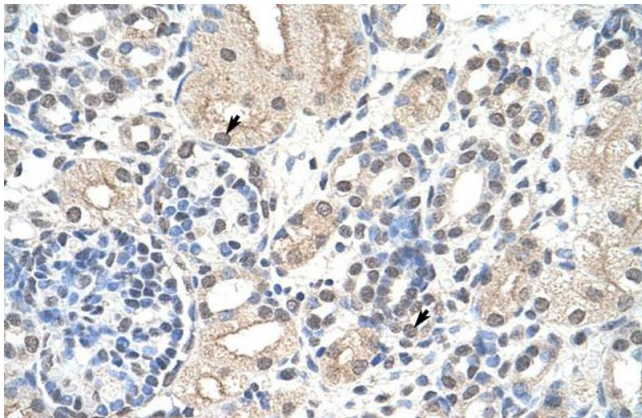
Handling

Buffer:	Liquid. Purified antibody supplied in 1x PBS buffer with 0.09 % (w/v) sodium azide and 2 % sucrose.
Preservative:	Sodium azide
Precaution of Use:	This product contains Sodium azide: a POISONOUS AND HAZARDOUS SUBSTANCE which should be handled by trained staff only.
Handling Advice:	Avoid repeated freeze-thaw cycles.
Storage:	-20 °C
Storage Comment:	For short term use, store at 2-8°C up to 1 week. For long term storage, store at -20°C in small aliquots to prevent freeze-thaw cycles.

Publications

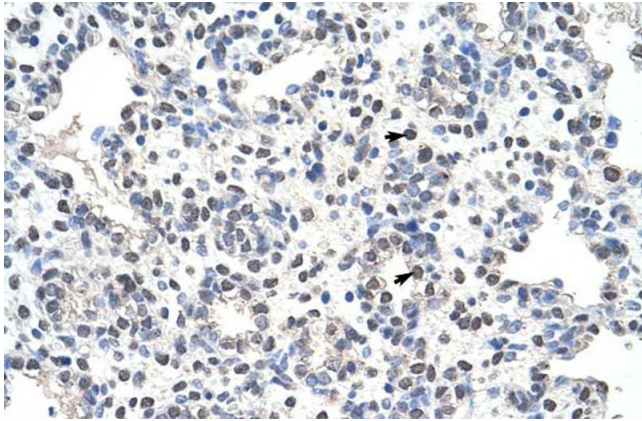
Product cited in:	Lazrek, Goffard, Schanen, Karquel, Bocket, Lion, Devaux, Hedouin, Gosset, Hober: "Detection of hepatitis C virus antibodies and RNA among medicolegal autopsy cases in Northern France." in: Diagnostic microbiology and infectious disease , Vol. 55, Issue 1, pp. 55-8, (2006) (PubMed).
-------------------	---

Images



Immunohistochemistry

Image 1. Rabbit Anti-NCL Antibody Catalog Number: ARP40583 Paraffin Embedded Tissue: Human Kidney Cellular Data: Epithelial cells of renal tubule Antibody Concentration: 4.0-8.0 ug/ml Magnification: 400X



Immunohistochemistry

Image 2. Rabbit Anti-NCL Antibody Catalog Number: ARP40583 Paraffin Embedded Tissue: Human Lung Cellular Data: Alveolar cells Antibody Concentration: 4.0-8.0 ug/ml Magnification: 400X



Western Blotting

Image 3. WB Suggested Anti-NCL Antibody Titration: 0.2-1 ug/ml Positive Control: Jurkat NCL is supported by BioGPS gene expression data to be expressed in Jurkat

Please check the [product details page](#) for more images. Overall 4 images are available for ABIN2778935.