

Datasheet for ABIN2778936
anti-Nucleolin antibody (C-Term)

5 Images

[Go to Product page](#)

Overview

Quantity:	100 µL
Target:	Nucleolin (NCL)
Binding Specificity:	C-Term
Reactivity:	Human, Mouse, Rat, Cow, Dog, Rabbit, Guinea Pig, Horse
Host:	Rabbit
Clonality:	Polyclonal
Conjugate:	This Nucleolin antibody is un-conjugated
Application:	Western Blotting (WB), Immunohistochemistry (IHC)

Product Details

Immunogen:	The immunogen is a synthetic peptide directed towards the C terminal region of human NCL
Sequence:	GGFGGRGGGR GGRGGFGGRG RGGFGGRGGF RGGRGGGGDH KPQGKKTKE
Predicted Reactivity:	Cow: 100%, Dog: 100%, Guinea Pig: 100%, Horse: 100%, Human: 100%, Mouse: 93%, Rabbit: 100%, Rat: 100%
Characteristics:	This is a rabbit polyclonal antibody against NCL. It was validated on Western Blot and immunohistochemistry.
Purification:	Protein A purified

Target Details

Target:	Nucleolin (NCL)
---------	-----------------

Target Details

Alternative Name:	NCL (NCL Products)
Background:	<p>Nucleolin (NCL), a eukaryotic nucleolar phosphoprotein, is involved in the synthesis and maturation of ribosomes. It is located mainly in dense fibrillar regions of the nucleolus. Nucleolin (NCL), a eukaryotic nucleolar phosphoprotein, is involved in the synthesis and maturation of ribosomes. It is located mainly in dense fibrillar regions of the nucleolus. Human NCL gene consists of 14 exons with 13 introns and spans approximately 11kb. The intron 11 of the NCL gene encodes a small nucleolar RNA, termed U20.</p> <p>Alias Symbols: C23</p> <p>Protein Interaction Partner: HUWE1, PIK3R1, PA2G4, NCL, HNRNPD, AURKA, MDM2, NFE4, CDKN1A, ADAP1, STAU1, ADAP2, UBC, NUP62, ZBTB1, ARFGF1, RPA3, RPA2, RPA1, ERG, RNF2, SUZ12, EED, EZH2, BMI1, NPM3, EIF3G, XRCC5, PLOD2, NCBP1, MCM2, LMNA, PRMT1, HNRNPK, KCTD12, DNM1, ACLY, SRPK3, TAR</p> <p>Protein Size: 710</p>
Molecular Weight:	78 kDa
Gene ID:	4691
NCBI Accession:	NM_005381 , NP_005372
UniProt:	P19338
Pathways:	Ribonucleoprotein Complex Subunit Organization

Application Details

Application Notes:	Optimal working dilutions should be determined experimentally by the investigator.
Comment:	Antigen size: 710 AA
Restrictions:	For Research Use only

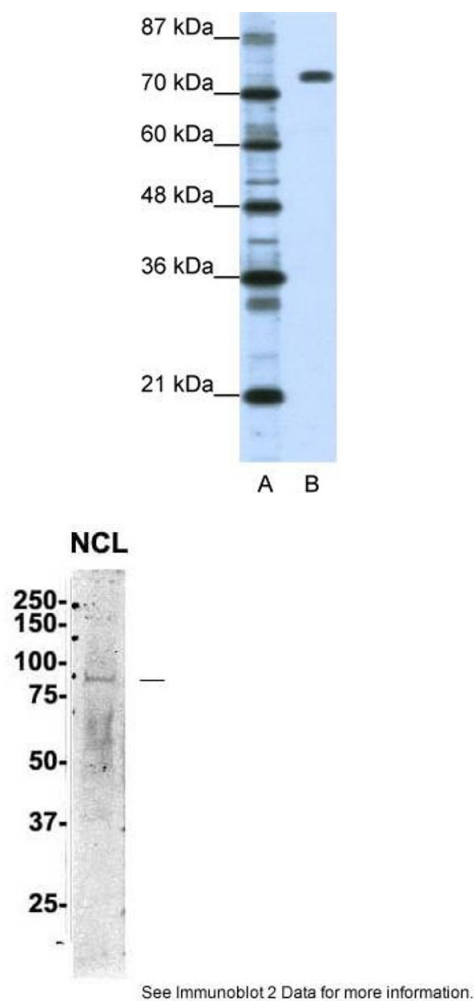
Handling

Format:	Liquid
Concentration:	Lot specific
Buffer:	Liquid. Purified antibody supplied in 1x PBS buffer with 0.09 % (w/v) sodium azide and 2 % sucrose.
Preservative:	Sodium azide
Precaution of Use:	This product contains Sodium azide: a POISONOUS AND HAZARDOUS SUBSTANCE which

Handling

	should be handled by trained staff only.
Handling Advice:	Avoid repeated freeze-thaw cycles.
Storage:	-20 °C
Storage Comment:	For short term use, store at 2-8°C up to 1 week. For long term storage, store at -20°C in small aliquots to prevent freeze-thaw cycles.

Images



Western Blotting

Image 1. WB Suggested Anti-NCL Antibody Titration: 1.25ug/ml Positive Control: Daudi cell lysate NCL is supported by BioGPS gene expression data to be expressed in Daudi

Western Blotting

Image 2. Sample Type: 1. Human NT-2 cells (60ug)

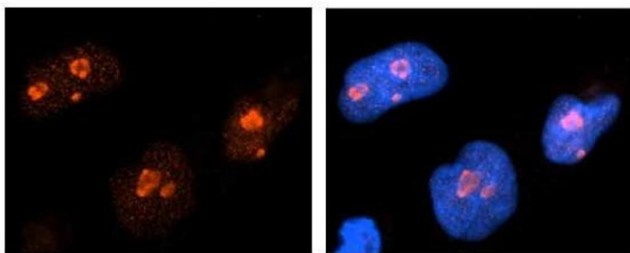
Primary Antibody Dilution: 2ug/ml

Secondary Antibody: IRDye 800CW goat anti-rabbit from Li-COR Bioscience

Secondary Antibody Dilution: 1: 20,000

Image Submitted by: Yuzhi Chen
University of Arkansas for Medical Science

NCL



See Immunohistochemistry 2 Data and Customer Feedback tab for more information.

Immunohistochemistry

Image 3. Sample Type: NT2 cells

Red: Antibody

Blue: DAPI

Primary Dilution: 1ug/50ul antibody

Secondary Antibody: Alexa goat anti-rabbit 594

Image Submitted by: Yuzhi Chen, University of Arkansas for Medical Sciences

Please check the [product details page](#) for more images. Overall 5 images are available for ABIN2778936.