



Datasheet for ABIN2778937
anti-HNRPDL antibody (Middle Region)



[Go to Product page](#)

5 Images

Overview

Quantity:	100 µL
Target:	HNRPDL
Binding Specificity:	Middle Region
Reactivity:	Human, Mouse, Rat, Dog, Cow, Guinea Pig, Zebrafish (Danio rerio), Horse
Host:	Rabbit
Clonality:	Polyclonal
Conjugate:	This HNRPDL antibody is un-conjugated
Application:	Western Blotting (WB), Immunohistochemistry (IHC)

Product Details

Immunogen:	The immunogen is a synthetic peptide directed towards the middle region of human HNRPDL
Sequence:	TMEDMNEYSN IEEFAEGSKI NASKNQDDG KMFIGGLSWD TSKKDLTEYL
Predicted Reactivity:	Cow: 100%, Dog: 100%, Guinea Pig: 100%, Horse: 100%, Human: 100%, Mouse: 100%, Rat: 100%, Zebrafish: 93%
Characteristics:	This is a rabbit polyclonal antibody against HNRPDL. It was validated on Western Blot and immunohistochemistry.
Purification:	Protein A purified

Target Details

Target:	HNRPDL
---------	--------

Target Details

Alternative Name: [HNRPDL \(HNRPDL Products\)](#)

Background: HNRPDL belongs to the subfamily of ubiquitously expressed heterogeneous nuclear ribonucleoproteins (hnRNPs). The hnRNPs are RNA binding proteins and they complex with heterogeneous nuclear RNA (hnRNA). These proteins are associated with pre-mRNAs in the nucleus and appear to influence pre-mRNA processing and other aspects of mRNA metabolism and transport. While all of the hnRNPs are present in the nucleus, some seem to shuttle between the nucleus and the cytoplasm. The hnRNP proteins have distinct nucleic acid binding properties. HNRPDL has two RRM domains that bind to RNAs.

Alias Symbols: HNRNP, JKTBP, JKTBP2, laAUF1, HNRPDL

Protein Interaction Partner: SPRTN, SUMO2, SUMO3, UBC, RPA3, RPA2, RPA1, ERG, EED, RNF2, rev, PARK2, FBXO6, TARDBP, HMGA1, ITGA4, IL7R, IFIT3, IFIT2, FN1, CSNK2A1, BARD1, EEF2, EEF1A1, DDX3X, ATP6V1B1, HNRNPA3, WIPF2, RMDN3, MRPS16, UBE2S, LSM14A, RPL36, U2AF2, HNRNPUL1, HNRNPA0, HNR

Protein Size: 363

Molecular Weight: 40 kDa

Gene ID: 9987

NCBI Accession: [NM_001207000](#)

UniProt: [O14979](#)

Application Details

Application Notes: Optimal working dilutions should be determined experimentally by the investigator.

Comment: Antigen size: 363 AA

Restrictions: For Research Use only

Handling

Format: Liquid

Concentration: Lot specific

Buffer: Liquid. Purified antibody supplied in 1x PBS buffer with 0.09 % (w/v) sodium azide and 2 % sucrose.

Preservative: Sodium azide

Precaution of Use: This product contains Sodium azide: a POISONOUS AND HAZARDOUS SUBSTANCE which

Handling

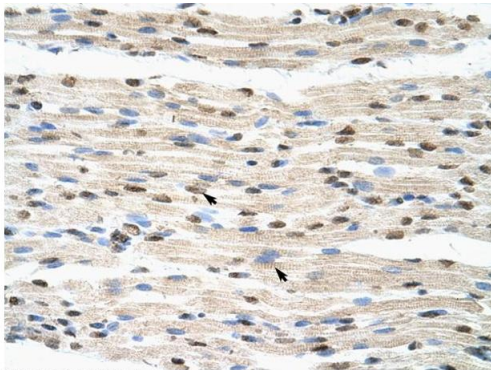
should be handled by trained staff only.

Handling Advice: Avoid repeated freeze-thaw cycles.

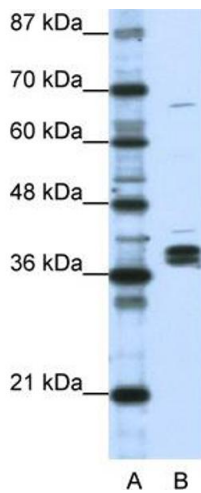
Storage: -20 °C

Storage Comment: For short term use, store at 2-8°C up to 1 week. For long term storage, store at -20°C in small aliquots to prevent freeze-thaw cycles.

Images



Rabbit Anti-HNRPDL Antibody
Catalog Number: ARP40585
Lot Number: QC10220
Paraffin Embedded Tissue: Human Muscle
Cells with Positive label: Skeletal muscle cells (Indicated with Arrows)
Antibody Concentration: 4.0-8.0 µg/ml
Magnification: 400X

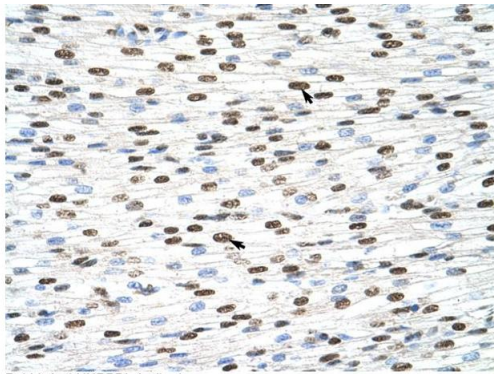


Immunohistochemistry

Image 1. Rabbit Anti-HNRPDL Antibody Paraffin Embedded Tissue: Human Muscle Cellular Data: Skeletal muscle cells
Antibody Concentration: 4.0-8.0 µg/ml Magnification: 400X

Western Blotting

Image 2. WB Suggested Anti-HNRPDL Antibody Titration: 1.0µg/ml Positive Control: Daudi cell lysate HNRNPD L is strongly supported by BioGPS gene expression data to be expressed in Human Daudi cells



Rabbit Anti-HNRPDL Antibody
Catalog Number: ARP40585
Lot Number: QC10220
Paraffin Embedded Tissue: Human Heart
Cells with Positive label: Myocardial cells (Indicated with Arrows)
Antibody Concentration: 4.0-8.0 µg/ml
Magnification: 400X

Immunohistochemistry

Image 3. Rabbit Anti-HNRPDL Antibody Paraffin Embedded
Tissue: Human Heart Cellular Data: Myocardial cells
Antibody Concentration: 4.0-8.0 µg/ml Magnification: 400X

Please check the [product details page](#) for more images. Overall 5 images are available for ABIN2778937.