

Datasheet for ABIN2778941
anti-KARS antibody (C-Term)[Go to Product page](#)

4 Images

Overview

Quantity:	100 µL
Target:	KARS
Binding Specificity:	C-Term
Reactivity:	Human, Mouse, Rat, Guinea Pig, Horse, Pig, Rabbit, Cow
Host:	Rabbit
Clonality:	Polyclonal
Conjugate:	This KARS antibody is un-conjugated
Application:	Western Blotting (WB), Immunohistochemistry (IHC)

Product Details

Immunogen:	The immunogen is a synthetic peptide directed towards the C terminal region of human KARS
Sequence:	GMGIDRVAMF LTDSNNIKEV LLFPAMKPED KKENVATTD T LESTTVGTSV
Predicted Reactivity:	Cow: 92%, Guinea Pig: 85%, Horse: 88%, Human: 100%, Mouse: 79%, Pig: 86%, Rabbit: 86%, Rat: 86%
Characteristics:	This is a rabbit polyclonal antibody against KARS. It was validated on Western Blot and immunohistochemistry.
Purification:	Affinity Purified

Target Details

Target:	KARS
---------	------

Target Details

Alternative Name:	KARS (KARS Products)
Background:	<p>Aminoacyl-tRNA synthetases are a class of enzymes that charge tRNAs with their cognate amino acids. Lysyl-tRNA synthetase is a homodimer localized to the cytoplasm which belongs to the class II family of tRNA synthetases. It has been shown to be a target of autoantibodies in the human autoimmune diseases, polymyositis or dermatomyositis Aminoacyl-tRNA synthetases are a class of enzymes that charge tRNAs with their cognate amino acids. Lysyl-tRNA synthetase is a homodimer localized to the cytoplasm which belongs to the class II family of tRNA synthetases. It has been shown to be a target of autoantibodies in the human autoimmune diseases, polymyositis or dermatomyositis.</p> <p>Alias Symbols: KRS, KARS2, CMTRIB</p> <p>Protein Interaction Partner: AIMP2, SUMO2, SUMO3, MDM2, UBC, SUMO1, NEDD8, STAT1, SSB, RPL21, RPL19, RPL17, NAP1L4, HSPA4, GPX1, CARS, APEH, CAND1, RANBP6, RPL36, JMJD6, NUDC, IPO7, AIMP1, SH3RF2, FBXO6, vpr, MSK1, gag, FN1, TRMT1, MRPS18B, UBE2S, CCT8, EEF1E1, VBP1, UBA1, RARS, QARS</p> <p>Protein Size: 597</p>
Molecular Weight:	66 kDa
Gene ID:	3735
NCBI Accession:	NM_005548 , NP_005539
UniProt:	Q15046

Application Details

Application Notes:	Optimal working dilutions should be determined experimentally by the investigator.
Comment:	Antigen size: 597 AA
Restrictions:	For Research Use only

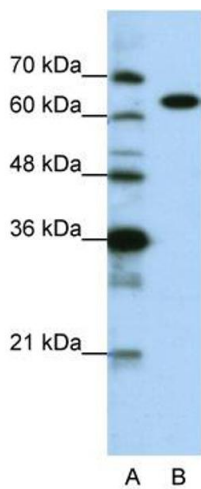
Handling

Format:	Liquid
Concentration:	Lot specific
Buffer:	Liquid. Purified antibody supplied in 1x PBS buffer with 0.09 % (w/v) sodium azide and 2 % sucrose.
Preservative:	Sodium azide

Handling

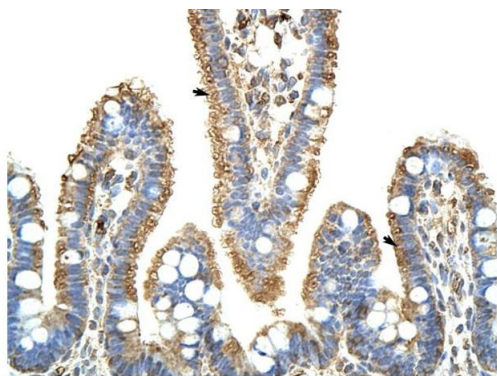
Precaution of Use:	This product contains Sodium azide: a POISONOUS AND HAZARDOUS SUBSTANCE which should be handled by trained staff only.
Handling Advice:	Avoid repeated freeze-thaw cycles.
Storage:	-20 °C
Storage Comment:	For short term use, store at 2-8°C up to 1 week. For long term storage, store at -20°C in small aliquots to prevent freeze-thaw cycles.

Images



Western Blotting

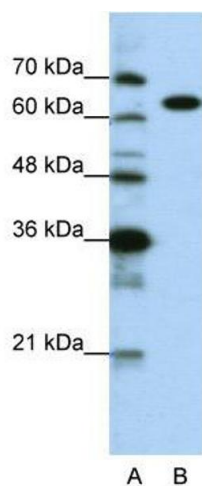
Image 1. WB Suggested Anti-KARS Antibody Titration: 0.2-1 ug/ml ELISA Titer: 1:312500 Positive Control: HepG2 cell lysate KARS is strongly supported by BioGPS gene expression data to be expressed in Human HepG2 cells



Rabbit Anti-KARS Antibody
Catalog Number: ARP40589
Lot Number: QC9723
Paraffin Embedded Tissue: Human Intestine
Cells with Positive label: Epithelial cells of intestinal villus (Indicated with Arrows)
Antibody Concentration: 4.0-8.0 µg/ml
Magnification: 400X

Immunohistochemistry

Image 2. Rabbit Anti-KARS Antibody Paraffin Embedded Tissue: Human Intestine Cellular Data: Epithelial cells of intestinal villas Antibody Concentration: 4.0-8.0 ug/ml Magnification: 400X



Western Blotting

Image 3. WB Suggested Anti-KARS

Antibody Titration: 0.2-1 µg/mL ELISA Titer: 1:12500

Positive Control: HepG2 cell lysate

KARS is strongly supported by BioGPS gene expression data to be expressed in Human HepG2 cells

Please check the [product details page](#) for more images. Overall 4 images are available for ABIN2778941.