

Datasheet for ABIN2778951 anti-SRRM1 antibody (C-Term)



[Go to Product page](#)

2 Images

Overview

| | |
|----------------------|-----------------------------------------------------------------------------------------------------------|
| Quantity: | 100 µL |
| Target: | SRRM1 |
| Binding Specificity: | C-Term |
| Reactivity: | Mouse, Human, Rat, Rabbit, Cow, Guinea Pig, Horse, Saccharomyces cerevisiae, Zebrafish (Danio rerio), Dog |
| Host: | Rabbit |
| Clonality: | Polyclonal |
| Conjugate: | This SRRM1 antibody is un-conjugated |
| Application: | Western Blotting (WB) |

Product Details

| | |
|-----------------------|------------------------------------------------------------------------------------------------------------------------------------|
| Sequence: | PSPVQSQSPS TNWSPAAPAK KAKSPTSPSPS PARNSDQEGG GKKKKKKKKDK |
| Predicted Reactivity: | Cow: 100%, Dog: 100%, Guinea Pig: 100%, Horse: 100%, Human: 100%, Mouse: 100%, Rabbit: 100%, Rat: 100%, Yeast: 92%, Zebrafish: 91% |
| Characteristics: | This is a rabbit polyclonal antibody against Srrm1. It was validated on Western Blot. |
| Purification: | Affinity Purified |

Target Details

| | |
|-------------------|------------------------------------------|
| Target: | SRRM1 |
| Alternative Name: | Srrm1 (SRRM1 Products) |

Target Details

Background: The function of this protein remains unknown.
Alias Symbols: -
Protein Size: 908

Molecular Weight: 99 kDa

Gene ID: 313620

NCBI Accession: [NM_001107986](#), [NP_001101456](#)

Application Details

Application Notes: Optimal working dilutions should be determined experimentally by the investigator.

Comment: Antigen size: 908 AA

Restrictions: For Research Use only

Handling

Format: Liquid

Concentration: Lot specific

Buffer: Liquid. Purified antibody supplied in 1x PBS buffer with 0.09 % (w/v) sodium azide and 2 % sucrose.

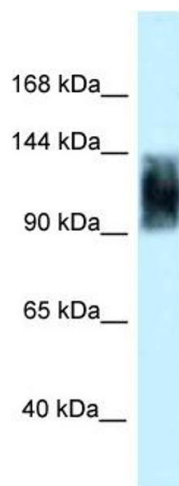
Preservative: Sodium azide

Precaution of Use: This product contains Sodium azide: a POISONOUS AND HAZARDOUS SUBSTANCE which should be handled by trained staff only.

Handling Advice: Avoid repeated freeze-thaw cycles.

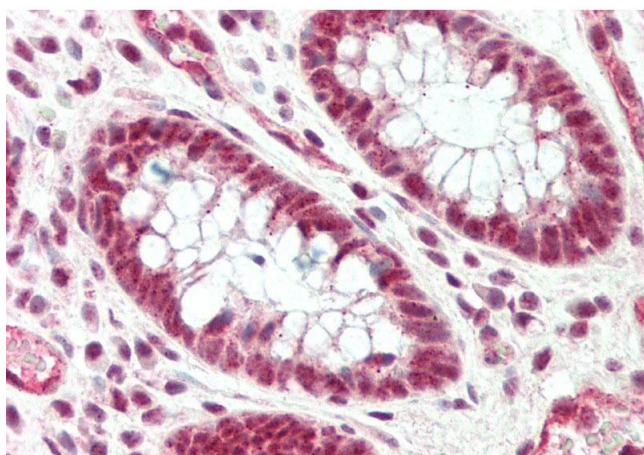
Storage: -20 °C

Storage Comment: For short term use, store at 2-8°C up to 1 week. For long term storage, store at -20°C in small aliquots to prevent freeze-thaw cycles.



Western Blotting

Image 1. WB Suggested Anti-Srrm1 Antibody Titration: 1.0 ug/ml Positive Control: Rat Brain



Immunohistochemistry

Image 2. Rabbit Anti-Srrm1 antibody Formalin Fixed Paraffin Embedded Tissue: Human Colon Primary antibody Concentration: 1:100 Secondary Antibody: Donkey anti-Rabbit-Cy3 Secondary Antibody Concentration: 1:200 Magnification: 20x Exposure Time: 0.5-2.0sec