



[Go to Product page](#)

Datasheet for ABIN2778955

anti-SMNDC1 antibody (Middle Region)

2 Images

Overview

Quantity:	100 µL
Target:	SMNDC1
Binding Specificity:	Middle Region
Reactivity:	Human, Mouse, Rat, Cow, Dog, Rabbit, Guinea Pig, Goat, Horse, Zebrafish (Danio rerio)
Host:	Rabbit
Clonality:	Polyclonal
Conjugate:	This SMNDC1 antibody is un-conjugated
Application:	Western Blotting (WB), Immunohistochemistry (IHC)

Product Details

Immunogen:	The immunogen is a synthetic peptide directed towards the middle region of human SMNDC1
Sequence:	QFNNRAYSKN KKGQVKRSIF ASPESVTGKV GVGTCGIADK PMTQYQDTSK
Predicted Reactivity:	Cow: 100%, Dog: 100%, Goat: 100%, Guinea Pig: 100%, Horse: 100%, Human: 100%, Mouse: 100%, Rabbit: 100%, Rat: 100%, Zebrafish: 93%
Characteristics:	This is a rabbit polyclonal antibody against SMNDC1. It was validated on Western Blot using a cell lysate as a positive control.
Purification:	Affinity Purified

Target Details

Target:	SMNDC1
---------	--------

Target Details

Alternative Name: SMNDC1 ([SMNDC1 Products](#))

Background: This gene is a paralog of SMN1 gene, which encodes the survival motor neuron protein, mutations in which are cause of autosomal recessive proximal spinal muscular atrophy. SMNDC1 is a nuclear protein that has been identified as a constituent of the spliceosome complex. This gene is differentially expressed, with abundant levels in skeletal muscle, and may share similar cellular function as the SMN1 gene. This gene is a paralog of SMN1 gene, which encodes the survival motor neuron protein, mutations in which are cause of autosomal recessive proximal spinal muscular atrophy. The protein encoded by this gene is a nuclear protein that has been identified as a constituent of the spliceosome complex. This gene is differentially expressed, with abundant levels in skeletal muscle, and may share similar cellular function as the SMN1 gene.

Alias Symbols: SMNR, SPF30

Protein Interaction Partner: UBC, PRPF3, SF3B5, SND1, CUL3, SF3A2, ELAVL1, HIST3H3, mad2, KPNB1, SNRNP200, SNRPB, CDK5RAP3, PPAN, TSR1, RNMTL1, SF3B1, SF3B3, SF3B2, SF3A3, SF3B4, DDX21, RUVBL1, RPL3, FDFT1, EWSR1,

Protein Size: 238

Molecular Weight: 27 kDa

Gene ID: 10285

NCBI Accession: [NM_005871](#), [NP_005862](#)

UniProt: [O75940](#)

Application Details

Application Notes: Optimal working dilutions should be determined experimentally by the investigator.

Comment: Antigen size: 238 AA

Restrictions: For Research Use only

Handling

Format: Liquid

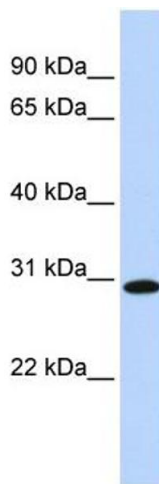
Concentration: Lot specific

Buffer: Liquid. Purified antibody supplied in 1x PBS buffer with 0.09 % (w/v) sodium azide and 2 % sucrose.

Handling

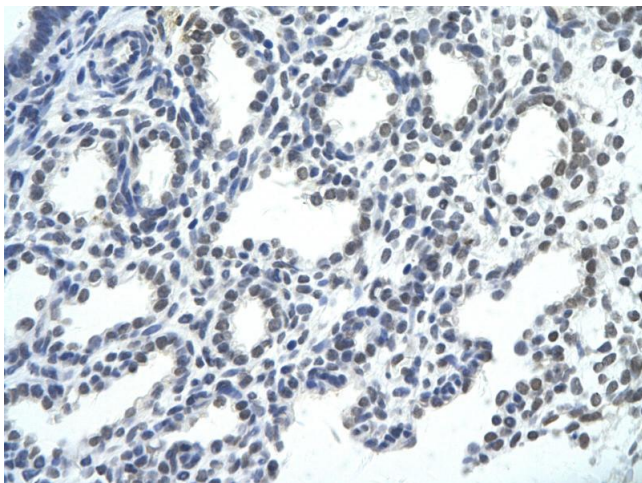
Preservative:	Sodium azide
Precaution of Use:	This product contains Sodium azide: a POISONOUS AND HAZARDOUS SUBSTANCE which should be handled by trained staff only.
Handling Advice:	Avoid repeated freeze-thaw cycles.
Storage:	-20 °C
Storage Comment:	For short term use, store at 2-8°C up to 1 week. For long term storage, store at -20°C in small aliquots to prevent freeze-thaw cycles.

Images



Western Blotting

Image 1. WB Suggested Anti-SMNDC1 Antibody Titration: 0.2-1 ug/ml ELISA Titer: 1:1562500 Positive Control: Human Lung



Immunohistochemistry

Image 2. Rabbit Anti-SMNDC1 antibody Paraffin Embedded Tissue: Human Lung cell Cellular Data: alveolar cell of renal tubule Antibody Concentration: 4.0-8.0 ug/ml Magnification: 400X