



[Go to Product page](#)

Datasheet for ABIN2778965
anti-GNB2L1 antibody (N-Term)

2 Images

Overview

Quantity:	100 µL
Target:	GNB2L1
Binding Specificity:	N-Term
Reactivity:	Human, Mouse, Rat, Dog, Cow, Sheep, Rabbit, Guinea Pig, Zebrafish (Danio rerio), Saccharomyces cerevisiae
Host:	Rabbit
Clonality:	Polyclonal
Conjugate:	This GNB2L1 antibody is un-conjugated
Application:	Western Blotting (WB), Immunohistochemistry (IHC)

Product Details

Immunogen:	The immunogen is a synthetic peptide directed towards the N terminal region of human GNB2L1
Sequence:	ISSDGQFALS GSWDGTLRWL DLTGTGTTTRR FVGHTKDVLS VAFSSDNRQI
Predicted Reactivity:	Cow: 100%, Dog: 100%, Guinea Pig: 100%, Human: 100%, Mouse: 100%, Rabbit: 100%, Rat: 100%, Sheep: 100%, Yeast: 100%, Zebrafish: 100%
Characteristics:	This is a rabbit polyclonal antibody against GNB2L1. It was validated on Western Blot using a cell lysate as a positive control.
Purification:	Affinity Purified

Target Details

Target:	GNB2L1
Alternative Name:	GNB2L1 (GNB2L1 Products)
Background:	<p>GNB2L1 seems to bind protein kinase C acting as an intracellular receptor to anchor the activated PKC to the cytoskeleton. GNB2L1 may be involved in up-regulation of the activity of kinases such as PKC via binding to KRT1. Together with KRT1 and ITGB1, GNB2L1 serves as a platform for SRC activation or inactivation. GNB2L1 may play an important role in the developing brain and neuronal differentiation.</p> <p>Alias Symbols: Gnb2-rs1, H12.3, HLC-7, PIG21, RACK1</p> <p>Protein Interaction Partner: MKRN2, LARP4B, HUWE1, UBC, SUMO2, HIF1A, STAU1, TARDBP, ADRB2, PRKCB, TRIM45, RNF2, EZH2, BMI1, SUZ12, rev, PTOV1, RPS8, RPS6, RPS5, RPS3A, RPS27L, EIF3K, SYNCRIP, DYNLL1, RPS3, RPSA, EIF3E, DYNC1LI2, RPS9, RPS27, RPS21, RPS20, RPS18, RPS16, RPS13, RPS12,</p> <p>Protein Size: 317</p>
Molecular Weight:	35 kDa
Gene ID:	10399
NCBI Accession:	NM_006098 , NP_006089
UniProt:	P63244
Pathways:	cAMP Metabolic Process , Positive Regulation of Endopeptidase Activity

Application Details

Application Notes:	Optimal working dilutions should be determined experimentally by the investigator.
Comment:	Antigen size: 317 AA
Restrictions:	For Research Use only

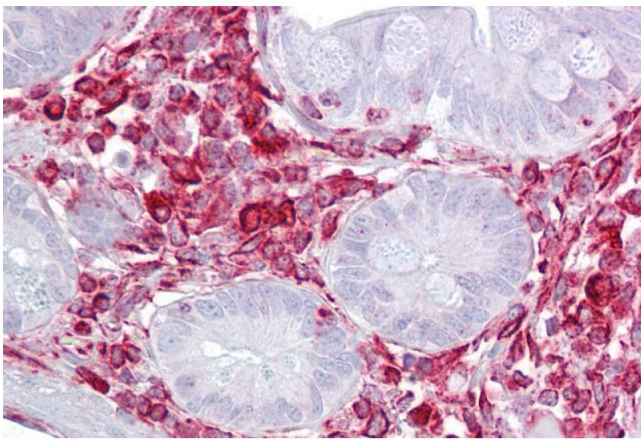
Handling

Format:	Liquid
Concentration:	Lot specific
Buffer:	Liquid. Purified antibody supplied in 1x PBS buffer with 0.09 % (w/v) sodium azide and 2 % sucrose.
Preservative:	Sodium azide

Handling

Precaution of Use:	This product contains Sodium azide: a POISONOUS AND HAZARDOUS SUBSTANCE which should be handled by trained staff only.
Handling Advice:	Avoid repeated freeze-thaw cycles.
Storage:	-20 °C
Storage Comment:	For short term use, store at 2-8°C up to 1 week. For long term storage, store at -20°C in small aliquots to prevent freeze-thaw cycles.

Images



Immunohistochemistry

Image 1. Immunohistochemistry with Small intestine tissue at an antibody concentration of 5µg/ml using anti-GNB2L1 antibody (ARP40624_P050)



Western Blotting

Image 2. WB Suggested Anti-GNB2L1 Antibody Titration: 0.2-1 µg/ml ELISA Titer: 1:12500 Positive Control: Transfected 293T