

Datasheet for ABIN2778966
anti-GNB2L1 antibody (C-Term)

4 Images

[Go to Product page](#)

Overview

Quantity:	100 µL
Target:	GNB2L1
Binding Specificity:	C-Term
Reactivity:	Human, Mouse, Rat, Dog, Cow, Sheep, Rabbit, Guinea Pig, Zebrafish (Danio rerio), Horse, Saccharomyces cerevisiae
Host:	Rabbit
Clonality:	Polyclonal
Conjugate:	This GNB2L1 antibody is un-conjugated
Application:	Western Blotting (WB), Immunohistochemistry (IHC)

Product Details

Immunogen:	The immunogen is a synthetic peptide directed towards the C terminal region of human GNB2L1
Sequence:	LEGKIIVDEL KQEVISTSSK AEPPQCTSLA WSADGQTLFA GYTDNLVRVW
Predicted Reactivity:	Cow: 100%, Dog: 100%, Guinea Pig: 100%, Horse: 93%, Human: 100%, Mouse: 100%, Rabbit: 100%, Rat: 100%, Sheep: 100%, Yeast: 100%, Zebrafish: 100%
Characteristics:	This is a rabbit polyclonal antibody against GNB2L1. It was validated on Western Blot using a cell lysate as a positive control.
Purification:	Affinity Purified

Target Details

Target:	GNB2L1
Alternative Name:	GNB2L1 (GNB2L1 Products)
Background:	<p>GNB2L1 seems to bind protein kinase C acting as an intracellular receptor to anchor the activated PKC to the cytoskeleton.</p> <p>Alias Symbols: H12.3, HLC-7, PIG21, RACK1, Gnb2-rs1</p> <p>Protein Interaction Partner: MKRN2, LARP4B, HUWE1, UBC, SUMO2, HIF1A, STAU1, TARDBP, ADRB2, PRKCB, TRIM45, RNF2, EZH2, BMI1, SUZ12, rev, PTOV1, RPS8, RPS6, RPS5, RPS3A, RPS27L, EIF3K, SYNCRIP, DYNLL1, RPS3, RPSA, EIF3E, DYNC1LI2, RPS9, RPS27, RPS21, RPS20, RPS18, RPS16, RPS13, RPS12,</p> <p>Protein Size: 317</p>
Molecular Weight:	35 kDa
Gene ID:	10399
NCBI Accession:	NM_006098 , NP_006089
UniProt:	P63244
Pathways:	cAMP Metabolic Process , Positive Regulation of Endopeptidase Activity

Application Details

Application Notes:	Optimal working dilutions should be determined experimentally by the investigator.
Comment:	Antigen size: 317 AA
Restrictions:	For Research Use only

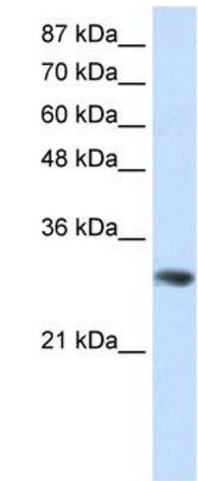
Handling

Format:	Liquid
Concentration:	Lot specific
Buffer:	Liquid. Purified antibody supplied in 1x PBS buffer with 0.09 % (w/v) sodium azide and 2 % sucrose.
Preservative:	Sodium azide
Precaution of Use:	This product contains Sodium azide: a POISONOUS AND HAZARDOUS SUBSTANCE which should be handled by trained staff only.
Handling Advice:	Avoid repeated freeze-thaw cycles.

Handling

Storage:	-20 °C
Storage Comment:	For short term use, store at 2-8°C up to 1 week. For long term storage, store at -20°C in small aliquots to prevent freeze-thaw cycles.

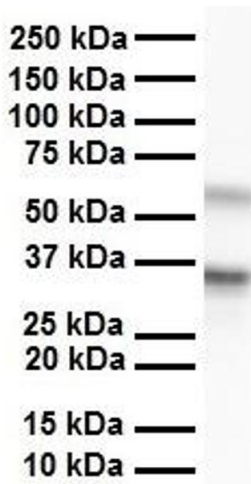
Images



GNB2L1



See Immunoblot 2 Data and Customer Feedback tab for more information.



Western Blotting

Image 1. WB Suggested Anti-GNB2L1 Antibody Titration: 0.2-1 ug/ml Positive Control: Jurkat cell lysate GNB2L1 is supported by BioGPS gene expression data to be expressed in Jurkat

Western Blotting

Image 2. Sample Type: MCF-7 WT a whole cell lysates (110UG)

Primary Dilution: 1.5mg/mL

Secondary Antibody: LI-COR Donkey anti-rabbit

Secondary Dilution: 1:10,000

Western Blotting

Image 3. WB Suggested Anti-GNB2L1 antibody Titration: 1 ug/mL Sample Type: Human liver

Please check the [product details page](#) for more images. Overall 4 images are available for ABIN2778966.