

Datasheet for ABIN2778968
anti-PPIE antibody (Middle Region)

3 Images

[Go to Product page](#)

Overview

Quantity:	100 µL
Target:	PPIE
Binding Specificity:	Middle Region
Reactivity:	Human, Mouse, Rat, Dog, Guinea Pig, Saccharomyces cerevisiae, Cow, Horse, Pig, Rabbit, Sheep
Host:	Rabbit
Clonality:	Polyclonal
Conjugate:	This PPIE antibody is un-conjugated
Application:	Western Blotting (WB), Immunohistochemistry (IHC)

Product Details

Immunogen:	The immunogen is a synthetic peptide directed towards the middle region of human PPIE
Sequence:	KKFSGKTL EE NKEEEGSEPP KAETQEGEP I AKKARSNPQV YMDIKIGNKP
Predicted Reactivity:	Cow: 100%, Dog: 100%, Guinea Pig: 86%, Horse: 100%, Human: 100%, Mouse: 93%, Pig: 100%, Rabbit: 100%, Rat: 93%, Sheep: 100%, Yeast: 100%
Characteristics:	This is a rabbit polyclonal antibody against PPIE. It was validated on Western Blot and immunohistochemistry.
Purification:	Protein A purified

Target Details

Target:	PPIE
---------	------

Target Details

Alternative Name:	PPIE (PPIE Products)
Background:	<p>PPIE is a member of the peptidyl-prolyl cis-trans isomerase (PPIase) family. PPIases catalyze the cis-trans isomerization of proline imidic peptide bonds in oligopeptides and accelerate the folding of proteins. This protein contains a highly conserved cyclophilin (CYP) domain as well as an RNA-binding domain. It was shown to possess PPIase and protein folding activities and also exhibit RNA-binding activity. Three alternatively spliced transcript variants encoding distinct isoforms have been observed. The protein encoded by this gene is a member of the peptidyl-prolyl cis-trans isomerase (PPIase) family. PPIases catalyze the cis-trans isomerization of proline imidic peptide bonds in oligopeptides and accelerate the folding of proteins. This protein contains a highly conserved cyclophilin (CYP) domain as well as an RNA-binding domain. It was shown to possess PPIase and protein folding activities and also exhibit RNA-binding activity. Three alternatively spliced transcript variants encoding distinct isoforms have been observed.</p> <p>Alias Symbols: CYP33, CYP-33</p> <p>Protein Interaction Partner: XAB2, BMI1, UBC, EIF4A3, MAGOH, SF3A2, HHV8GK18_gp81, SUMO2, Prpf8, Cdc5l, Snw1, KMT2A, PHYHIP,</p> <p>Protein Size: 301</p>
Molecular Weight:	33 kDa
Gene ID:	10450
NCBI Accession:	NM_006112 , NP_006103
UniProt:	Q9UNP9

Application Details

Application Notes:	Optimal working dilutions should be determined experimentally by the investigator.
Comment:	Antigen size: 301 AA
Restrictions:	For Research Use only

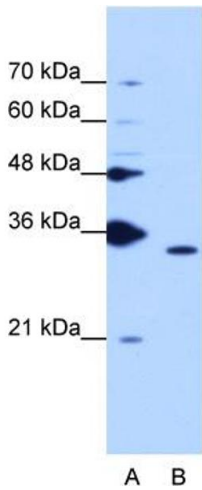
Handling

Format:	Liquid
Concentration:	Lot specific
Buffer:	Liquid. Purified antibody supplied in 1x PBS buffer with 0.09 % (w/v) sodium azide and 2 % sucrose.

Handling

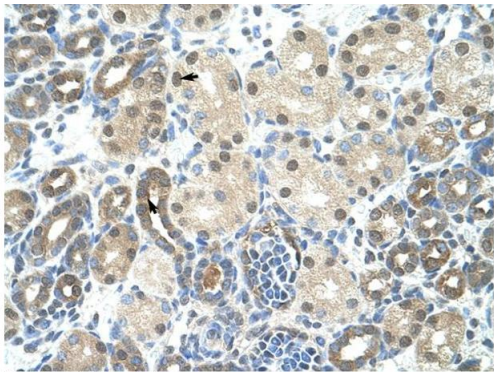
Preservative:	Sodium azide
Precaution of Use:	This product contains Sodium azide: a POISONOUS AND HAZARDOUS SUBSTANCE which should be handled by trained staff only.
Handling Advice:	Avoid repeated freeze-thaw cycles.
Storage:	-20 °C
Storage Comment:	For short term use, store at 2-8°C up to 1 week. For long term storage, store at -20°C in small aliquots to prevent freeze-thaw cycles.

Images



Western Blotting

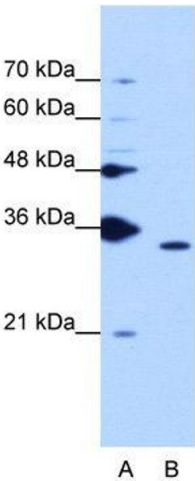
Image 1. WB Suggested Anti-PPIE Antibody Titration: 1.25ug/ml ELISA Titer: 1:62500 Positive Control: K562 cell lysate PPIE is strongly supported by BioGPS gene expression data to be expressed in Human K562 cells



Rabbit Anti-PPIE Antibody
Catalog Number: ARP40627
Lot Number: QC9755
Paraffin Embedded Tissue: Human Kidney
Cells with Positive label: Epithelial cells of renal tubule (Indicated with Arrows)
Antibody Concentration: 4.0-8.0 µg/ml
Magnification: 400X

Immunohistochemistry

Image 2. ARP40627 Paraffin Embedded Tissue: Human Kidney Cellular Data: Epithelial cells of renal tubule Antibody Concentration: 4.0-8.0 ug/ml Magnification: 400X



Western Blotting

Image 3. WB Suggested Anti-PPIE

Antibody Titration: 1.25 µg/mL ELISA Titer: 1:62500

Positive Control: K562 cell lysate

PPIE is strongly supported by BioGPS gene expression data to be expressed in Human K562 cells