

Datasheet for ABIN2778977  
**anti-NXF1 antibody (N-Term)**[Go to Product page](#)

## 4 Images

## Overview

Quantity:	100 µL
Target:	NXF1
Binding Specificity:	N-Term
Reactivity:	Human, Mouse, Rat, Dog, Guinea Pig, Cow
Host:	Rabbit
Clonality:	Polyclonal
Conjugate:	This NXF1 antibody is un-conjugated
Application:	Western Blotting (WB), Immunohistochemistry (IHC)

## Product Details

Immunogen:	The immunogen is a synthetic peptide directed towards the N terminal region of human NXF1
Sequence:	MADEGKSYSE HDDERNFPQ RKKKGRGPFR WKYGEGNRRS GRGGSGIRSS
Predicted Reactivity:	Cow: 92%, Dog: 83%, Guinea Pig: 92%, Human: 100%, Mouse: 92%, Rat: 92%
Characteristics:	This is a rabbit polyclonal antibody against NXF1. It was validated on Western Blot and immunohistochemistry.
Purification:	Protein A purified

## Target Details

Target:	NXF1
Alternative Name:	NXF1 ( <a href="#">NXF1 Products</a> )

## Target Details

Background:	<p>NXF1 is one member of a family of nuclear RNA export factor. Common domain features of this family are a noncanonical RNP-type RNA-binding domain (RBD), 4 leucine-rich repeats (LRRs), a nuclear transport factor 2 (NTF2)-like domain that allows heterodimerization with NTF2-related export protein-1 (NXT1), and a ubiquitin-associated domain that mediates interactions with nucleoporins. The LRRs and NTF2-like domains are required for export activity. NXF1 shuttles between the nucleus and the cytoplasm and binds in vivo to poly(A)+ RNA. NXF1 overcomes the mRNA export block caused by the presence of saturating amounts of CTE (constitutive transport element) RNA of type D retroviruses. This gene is one member of a family of nuclear RNA export factor genes. Common domain features of this family are a noncanonical RNP-type RNA-binding domain (RBD), 4 leucine-rich repeats (LRRs), a nuclear transport factor 2 (NTF2)-like domain that allows heterodimerization with NTF2-related export protein-1 (NXT1), and a ubiquitin-associated domain that mediates interactions with nucleoporins. The LRRs and NTF2-like domains are required for export activity. Alternative splicing seems to be a common mechanism in this gene family. The encoded protein of this gene shuttles between the nucleus and the cytoplasm and binds in vivo to poly(A)+ RNA. It is the vertebrate homologue of the yeast protein Mex67p. The encoded protein overcomes the mRNA export block caused by the presence of saturating amounts of CTE (constitutive transport element) RNA of type D retroviruses.</p> <p>Alias Symbols: TAP, MEX67</p> <p>Protein Interaction Partner: KRT40, TIFA, GFAP, LDOC1, NUP62, MID2, TP53BP2, DVL3, SUMO2, UBC, SUZ12, EED, BMI1, TARDBP, NXT1, NUP98, RANBP2, ESRRA, KCTD5, TRA2A, SGTA, TRA2B, SRSF1, RAD51, ZBED2, CSNK2A1, EIF2A, ILF3, HNRNPC, HNRNPK, DHX15, DHX9, DDB1, DDX19A, LUC7L3, HP1BP3, RBMX,</p> <p>Protein Size: 619</p>
-------------	--

Molecular Weight:	68 kDa
-------------------	--------

Gene ID:	10482
----------	-------

NCBI Accession:	<a href="#">NM_006362</a> , <a href="#">NP_006353</a>
-----------------	---

UniProt:	<a href="#">Q9UBU9</a>
----------	------------------------

## Application Details

Application Notes:	Optimal working dilutions should be determined experimentally by the investigator.
--------------------	--

Comment:	Antigen size: 619 AA
----------	----------------------

Restrictions:	For Research Use only
---------------	-----------------------

## Handling

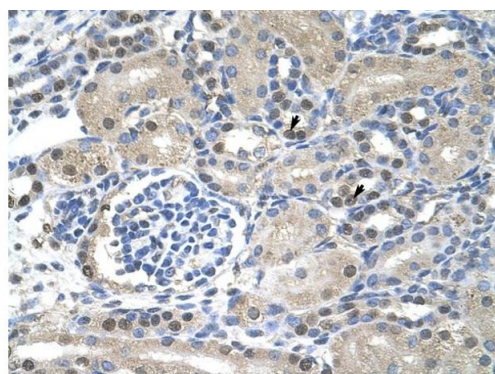
Format:	Liquid
Concentration:	Lot specific
Buffer:	Liquid. Purified antibody supplied in 1x PBS buffer with 0.09 % (w/v) sodium azide and 2 % sucrose.
Preservative:	Sodium azide
Precaution of Use:	This product contains Sodium azide: a POISONOUS AND HAZARDOUS SUBSTANCE which should be handled by trained staff only.
Handling Advice:	Avoid repeated freeze-thaw cycles.
Storage:	-20 °C
Storage Comment:	For short term use, store at 2-8°C up to 1 week. For long term storage, store at -20°C in small aliquots to prevent freeze-thaw cycles.

## Images



### Western Blotting

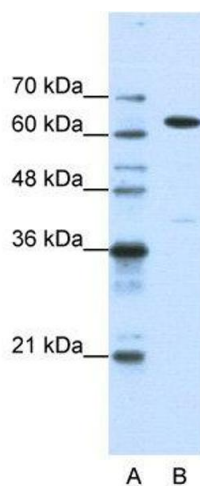
**Image 1.** WB Suggested Anti-NXF1 Antibody Titration: 1.25ug/ml Positive Control: HepG2 cell lysate NXF1 is supported by BioGPS gene expression data to be expressed in HepG2



Rabbit Anti-NXF1 Antibody  
Catalog Number: ARP40639  
Lot Number: QC10949  
Paraffin Embedded Tissue: Human Kidney  
Cells with Positive label: Epithelial cells of renal tubule (Indicated with Arrows)  
Antibody Concentration: 4.0-8.0 µg/ml  
Magnification: 400X

### Immunohistochemistry

**Image 2.** Rabbit Anti-NXF1 Antibody Paraffin Embedded Tissue: Human Kidney Cellular Data: Epithelial cells of renal tubule Antibody Concentration: 4.0-8.0 ug/ml Magnification: 400X



#### Western Blotting

**Image 3.** WB Suggested Anti-NXF1

Antibody Titration: 1.25 µg/mL

Positive Control: HepG2 cell lysate

NXF1 is supported by BioGPS gene expression data to be expressed in HepG2

Please check the [product details page](#) for more images. Overall 4 images are available for ABIN2778977.