



Datasheet for ABIN2778984
anti-RNASEH2A antibody (C-Term)



[Go to Product page](#)

3 Images

Overview

Quantity:	100 µL
Target:	RNASEH2A
Binding Specificity:	C-Term
Reactivity:	Human
Host:	Rabbit
Clonality:	Polyclonal
Conjugate:	This RNASEH2A antibody is un-conjugated
Application:	Western Blotting (WB), Immunohistochemistry (IHC)

Product Details

Immunogen:	The immunogen is a synthetic peptide directed towards the C terminal region of human RNASEH2A
Sequence:	EKEAEDVIWE DSASENQEGL RKITSYFLNE GSQARPRSSH RYFLERGLS
Predicted Reactivity:	Human: 100%
Characteristics:	This is a rabbit polyclonal antibody against RNASEH2A. It was validated on Western Blot and immunohistochemistry.
Purification:	Affinity Purified

Target Details

Target:	RNASEH2A
---------	----------

Target Details

Alternative Name: [RNASEH2A \(RNASEH2A Products\)](#)

Background: Of the multiple RNases H in mammals, RNase HI is the major enzyme and shows increased activity during DNA replication. It shows more homology to the RNase HII of Escherichia coli. Of the multiple RNases H in mammals, RNase HI is the major enzyme and shows increased activity during DNA replication. It shows more homology to the RNase HII of Escherichia coli. Of the multiple RNases H in mammals, RNase HI is the major enzyme and shows increased activity during DNA replication. It shows more homology to the RNase HII of Escherichia coli.

Alias Symbols: JUNB, RNASEHI, RNHIA, RNHL, AGS4

Protein Interaction Partner: UBC, IPO7, UGDH, RNASEH2C, RNASEH2B, NDOR1, ITSN1,

Protein Size: 299

Molecular Weight: 33 kDa

Gene ID: 10535

NCBI Accession: [NM_006397](#), [NP_006388](#)

UniProt: [O75792](#)

Application Details

Application Notes: Optimal working dilutions should be determined experimentally by the investigator.

Comment: Antigen size: 299 AA

Restrictions: For Research Use only

Handling

Format: Liquid

Concentration: Lot specific

Buffer: Liquid. Purified antibody supplied in 1x PBS buffer with 0.09 % (w/v) sodium azide and 2 % sucrose.

Preservative: Sodium azide

Precaution of Use: This product contains Sodium azide: a POISONOUS AND HAZARDOUS SUBSTANCE which should be handled by trained staff only.

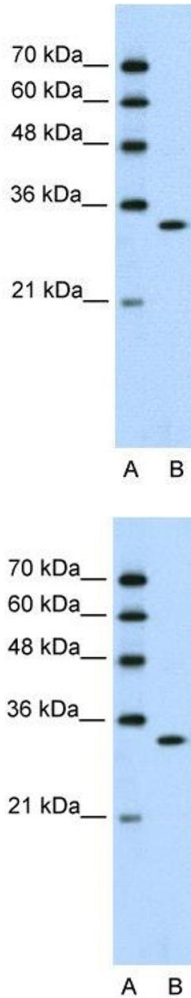
Handling Advice: Avoid repeated freeze-thaw cycles.

Storage: -20 °C

Handling

Storage Comment: For short term use, store at 2-8°C up to 1 week. For long term storage, store at -20°C in small aliquots to prevent freeze-thaw cycles.

Images



Western Blotting

Image 1. WB Suggested Anti-RNASEH2A

Antibody Titration: 0.2-1 µg/mL

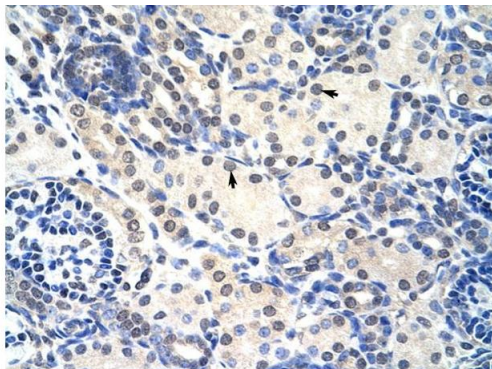
Positive Control: Jurkat cell lysate

RNASEH2A is supported by BioGPS gene expression data to be expressed in Jurkat

Western Blotting

Image 2. WB Suggested Anti-RNASEH2A Antibody Titration:

0.2-1 ug/ml Positive Control: Jurkat cell lysate RNASEH2A is supported by BioGPS gene expression data to be expressed in Jurkat



Rabbit Anti-RNASEH2A Antibody
Catalog Number: ARP40646
Lot Number: QC10952
Paraffin Embedded Tissue: Human Kidney
Cells with Positive label: Epithelial cells of renal tubule (Indicated with Arrows)
Antibody Concentration: 4.0-8.0 µg/ml
Magnification: 400X

Immunohistochemistry

Image 3. Rabbit Anti-RNASEH2A Antibody Paraffin

Embedded Tissue: Human Kidney Cellular Data: Epithelial cells of renal tubule Antibody Concentration: 4.0-8.0 ug/ml

Magnification: 400X