



Datasheet for ABIN2778986  
**anti-PRPF8 antibody (N-Term)**



[Go to Product page](#)

2 Images

Overview

Quantity:	100 µL
Target:	PRPF8
Binding Specificity:	N-Term
Reactivity:	Human, Mouse, Rat, Zebrafish (Danio rerio), Dog, Cow, Guinea Pig, Horse, Rabbit
Host:	Rabbit
Clonality:	Polyclonal
Conjugate:	This PRPF8 antibody is un-conjugated
Application:	Western Blotting (WB)

Product Details

Immunogen:	The immunogen is a synthetic peptide directed towards the N terminal region of human PRPF8
Sequence:	SHRHSVKSQE PLPDDDEEFE LPEFVEPFLK DTPLYTDNTA NGIALLWAPR
Predicted Reactivity:	Cow: 100%, Dog: 100%, Guinea Pig: 100%, Horse: 100%, Human: 100%, Mouse: 100%, Rabbit: 100%, Rat: 100%, Zebrafish: 100%
Characteristics:	This is a rabbit polyclonal antibody against PRPF8. It was validated on Western Blot using a cell lysate as a positive control.
Purification:	Affinity Purified

Target Details

Target:	PRPF8
---------	-------

## Target Details

---

Alternative Name: PRPF8 ([PRPF8 Products](#))

---

Background: Pre-mRNA splicing occurs in 2 sequential transesterification steps. PRPF8 is a component of both U2- and U12-dependent spliceosomes, and found to be essential for the catalytic step II in pre-mRNA splicing process. It contains several WD repeats, which function in protein-protein interactions. This protein has a sequence similarity to yeast Prp8 protein. The gene encoding PRPF8 is a candidate gene for autosomal dominant retinitis pigmentosa. Pre-mRNA splicing occurs in 2 sequential transesterification steps. The protein encoded by this gene is a component of both U2- and U12-dependent spliceosomes, and found to be essential for the catalytic step II in pre-mRNA splicing process. It contains several WD repeats, which function in protein-protein interactions. This protein has a sequence similarity to yeast Prp8 protein. This gene is a candidate gene for autosomal dominant retinitis pigmentosa. Publication Note: This RefSeq record includes a subset of the publications that are available for this gene. Please see the Entrez Gene record to access additional publications.

Alias Symbols: HPRP8, PRP8, PRPC8, RP13

Protein Interaction Partner: SNRNP200, PRPF8, EFTUD2, UBC, CDKN1A, SUMO2, SUMO3, STAU1, LGR4, NEDD8, ERG, ASB15, WWOX, RPA3, RPA2, RPA1, EED, RNF2, SUZ12, rev, PIN1, NEDD4, FBXO6, PRPF4B, UBD, IGSF8, ICAM1, SND1, SF3B2, SLU7, ZNF830, WDR83, PRPF19, GPKOW, FN1, BCAS2, SF3B4, RBM5, VCA

Protein Size: 2335

---

Molecular Weight: 273 kDa

---

Gene ID: 10594

---

NCBI Accession: [NM\\_006445](#), [NP\\_006436](#)

---

UniProt: [Q6P2Q9](#)

---

## Application Details

---

Application Notes: Optimal working dilutions should be determined experimentally by the investigator.

---

Comment: Antigen size: 2335 AA

---

Restrictions: For Research Use only

---

## Handling

---

Format: Liquid

---

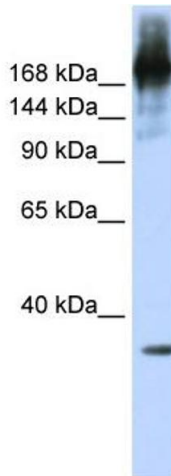
Concentration: Lot specific

---

## Handling

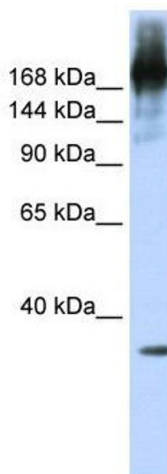
Buffer:	Liquid. Purified antibody supplied in 1x PBS buffer with 0.09 % (w/v) sodium azide and 2 % sucrose.
Preservative:	Sodium azide
Precaution of Use:	This product contains Sodium azide: a POISONOUS AND HAZARDOUS SUBSTANCE which should be handled by trained staff only.
Handling Advice:	Avoid repeated freeze-thaw cycles.
Storage:	-20 °C
Storage Comment:	For short term use, store at 2-8°C up to 1 week. For long term storage, store at -20°C in small aliquots to prevent freeze-thaw cycles.

## Images



### Western Blotting

**Image 1.** WB Suggested Anti-PRPF8 Antibody Titration: 0.2-1 ug/ml ELISA Titer: 1:312500 Positive Control: Jurkat cell lysate PRPF8 is supported by BioGPS gene expression data to be expressed in Jurkat



### Western Blotting

**Image 2.** WB Suggested Anti-PRPF8 Antibody Titration: 0.2-1 µg/mL ELISA Titer: 1:12500 Positive Control: Jurkat cell lysate PRPF8 is supported by BioGPS gene expression data to be expressed in Jurkat