

Datasheet for ABIN2778997
anti-KHDRBS3 antibody (C-Term)[Go to Product page](#)

2 Images

Overview

Quantity:	100 µL
Target:	KHDRBS3
Binding Specificity:	C-Term
Reactivity:	Human, Mouse, Rat, Cow, Dog, Guinea Pig, Horse, Rabbit
Host:	Rabbit
Clonality:	Polyclonal
Conjugate:	This KHDRBS3 antibody is un-conjugated
Application:	Western Blotting (WB), Immunohistochemistry (IHC)

Product Details

Immunogen:	The immunogen is a synthetic peptide directed towards the C terminal region of human KHDRBS3
Sequence:	EQSYDSYDNS YSTPAQSGAD YYDYGHGLSE ETYDSYGQEE WTNSRHKAPS
Predicted Reactivity:	Cow: 100%, Dog: 86%, Guinea Pig: 100%, Horse: 100%, Human: 100%, Mouse: 86%, Rabbit: 100%, Rat: 100%
Characteristics:	This is a rabbit polyclonal antibody against KHDRBS3. It was validated on Western Blot and immunohistochemistry.
Purification:	Affinity Purified

Target Details

Target:	KHDRBS3
---------	---------

Target Details

Alternative Name:	KHDRBS3 (KHDRBS3 Products)
Background:	<p>As a RNA-binding protein, KHDRBS3 plays a role in the regulation of alternative splicing and influences mRNA splice site selection and exon inclusion. KHDRBS3 may play a role as a negative regulator of cell growth. It inhibits cell proliferation and involved in splice site selection of vascular endothelial growth factor. It induces an increased concentration-dependent incorporation of exon in CD44 pre-mRNA by direct binding to purine-rich exonic enhancer. RNA-binding abilities are down-regulated by tyrosine kinase PTK6. It also involved in post-transcriptional regulation of HIV-1 gene expression.</p> <p>Alias Symbols: Etle, SALP, SLM2, SLM-2, TSTAR, T-STAR, etoile</p> <p>Protein Interaction Partner: YTHDC1, DMRT3, MARK4, NCOA5, PRPF31, BAHD1, KHDRBS3, INPP5D, UBC, BMI1, NELFB, RBM7, PSMF1, SIAH1, HNRNPK, KHDRBS2, CCDC33, PTBP2, U2AF2, KHDRBS1, SNRPC, HNRNPC, FUS, FBXO32, SERPINB5, RBBP6, CACNA1A, RPAP2, ZNF408, LNX1, SGSM2, SRSF9, NUDT18, PRMT1, RBMY</p> <p>Protein Size: 346</p>
Molecular Weight:	38 kDa
Gene ID:	10656
NCBI Accession:	NM_006558 , NP_006549
UniProt:	O75525

Application Details

Application Notes:	Optimal working dilutions should be determined experimentally by the investigator.
Comment:	Antigen size: 346 AA
Restrictions:	For Research Use only

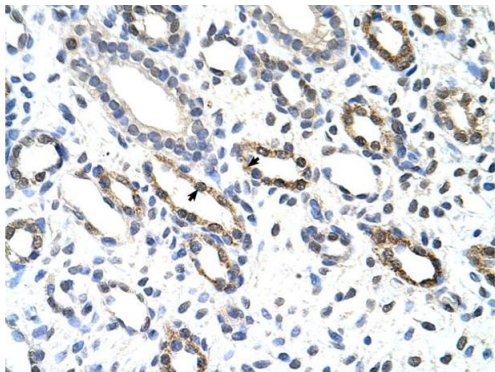
Handling

Format:	Liquid
Concentration:	Lot specific
Buffer:	Liquid. Purified antibody supplied in 1x PBS buffer with 0.09 % (w/v) sodium azide and 2 % sucrose.
Preservative:	Sodium azide
Precaution of Use:	This product contains Sodium azide: a POISONOUS AND HAZARDOUS SUBSTANCE which

Handling

	should be handled by trained staff only.
Handling Advice:	Avoid repeated freeze-thaw cycles.
Storage:	-20 °C
Storage Comment:	For short term use, store at 2-8°C up to 1 week. For long term storage, store at -20°C in small aliquots to prevent freeze-thaw cycles.

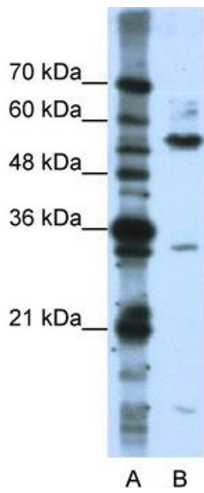
Images



Rabbit Anti-KHDRBS3 Antibody
Catalog Number: ARP40663
Lot Number: QC9802
Paraffin Embedded Tissue: Human Kidney
Cells with Positive label: Epithelial cells of renal tubule (Indicated with Arrows)
Antibody Concentration: 4.0-8.0 µg/ml
Magnification: 400X

Immunohistochemistry

Image 1. Rabbit Anti-KHDRBS3 Antibody Paraffin Embedded Tissue: Human Kidney Cellular Data: Epithelial cells of renal tubule Antibody Concentration: 4.0-8.0 ug/ml Magnification: 400X



Western Blotting

Image 2. WB Suggested Anti-KHDRBS3 Antibody Titration: 0.2-1 ug/ml ELISA Titer: 1:62500 Positive Control: Jurkat cell lysate