



[Go to Product page](#)

Datasheet for ABIN2779007

anti-SURF6 antibody (Middle Region)

3 Images

Overview

Quantity:	100 µL
Target:	SURF6
Binding Specificity:	Middle Region
Reactivity:	Human, Mouse, Rat, Cow, Guinea Pig, Horse
Host:	Rabbit
Clonality:	Polyclonal
Conjugate:	This SURF6 antibody is un-conjugated
Application:	Western Blotting (WB), Immunohistochemistry (IHC)

Product Details

Immunogen:	The immunogen is a synthetic peptide directed towards the middle region of human SURF6
Sequence:	EPREPPGLIF NKVEVSEDEP ASKAQRRKEK RQRVKGNLTP LTGRNYRQLL
Predicted Reactivity:	Cow: 86%, Guinea Pig: 86%, Horse: 100%, Human: 100%, Mouse: 86%, Rat: 93%
Characteristics:	This is a rabbit polyclonal antibody against SURF6. It was validated on Western Blot and immunohistochemistry.
Purification:	Protein A purified

Target Details

Target:	SURF6
Alternative Name:	SURF6 (SURF6 Products)

Target Details

Background: This gene is located in the surfeit gene cluster, a group of very tightly linked genes that do not share sequence similarity. The gene demonstrates features of a housekeeping gene, being ubiquitously expressed, and the encoded protein has been localized to the nucleolus. The protein includes motifs found in both the mouse and fish orthologs, which suggests a putative function as a nucleolar-matrix protein with nucleic acid-binding properties, based on characteristics determined in mouse. This gene is located in the surfeit gene cluster, a group of very tightly linked genes that do not share sequence similarity. The gene demonstrates features of a housekeeping gene, being ubiquitously expressed, and the encoded protein has been localized to the nucleolus. The protein includes motifs found in both the mouse and fish orthologs, which suggests a putative function as a nucleolar-matrix protein with nucleic acid-binding properties, based on characteristics determined in mouse.

Alias Symbols: RRP14

Protein Interaction Partner: UBC, LIN28A, CSNK2A1, SIRT7,

Protein Size: 361

Molecular Weight: 40 kDa

Gene ID: 6838

NCBI Accession: [NM_006753](#), [NP_006744](#)

UniProt: [O75683](#)

Pathways: [Ribonucleoprotein Complex Subunit Organization](#), [Ribosome Assembly](#)

Application Details

Application Notes: Optimal working dilutions should be determined experimentally by the investigator.

Comment: Antigen size: 361 AA

Restrictions: For Research Use only

Handling

Format: Liquid

Concentration: Lot specific

Buffer: Liquid. Purified antibody supplied in 1x PBS buffer with 0.09 % (w/v) sodium azide and 2 % sucrose.

Preservative: Sodium azide

Handling

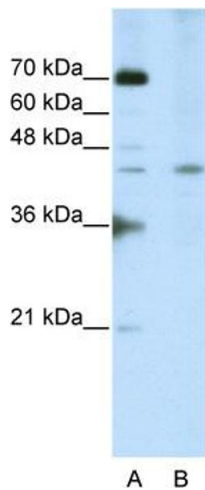
Precaution of Use: This product contains Sodium azide: a POISONOUS AND HAZARDOUS SUBSTANCE which should be handled by trained staff only.

Handling Advice: Avoid repeated freeze-thaw cycles.

Storage: -20 °C

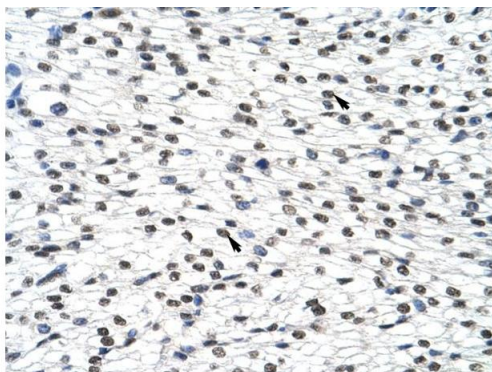
Storage Comment: For short term use, store at 2-8°C up to 1 week. For long term storage, store at -20°C in small aliquots to prevent freeze-thaw cycles.

Images



Western Blotting

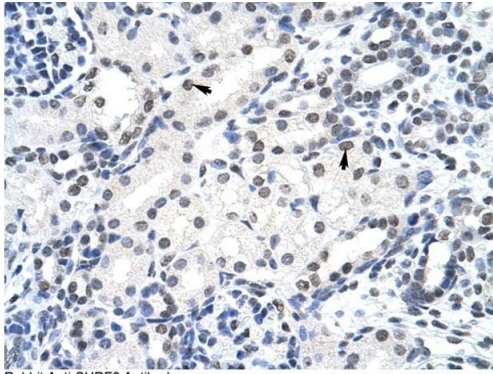
Image 1. WB Suggested Anti-SURF6 Antibody Titration: 2.5ug/ml ELISA Titer: 1:312500 Positive Control: Jurkat cell lysate



Rabbit Anti-SURF6 Antibody
Catalog Number: ARP40681
Lot Number: QC9808
Paraffin Embedded Tissue: Human Heart
Cells with Positive label: Myocardial cells (Indicated with Arrows)
Antibody Concentration: 4.0-8.0 µg/ml
Magnification: 400X

Immunohistochemistry

Image 2. Rabbit Anti-SURF6 Antibody Paraffin Embedded Tissue: Human Heart Cellular Data: Myocardial cells Antibody Concentration: 4.0-8.0 ug/ml Magnification: 400X



Rabbit Anti-SURF6 Antibody
Catalog Number: ARP40681
Lot Number: QC9808
Paraffin Embedded Tissue: Human Kidney
Cells with Positive label: Epithelial cells of renal tubule (Indicated with Arrows)
Antibody Concentration: 4.0-8.0 µg/ml
Magnification: 400X

Immunohistochemistry

Image 3. Rabbit Anti-SURF6 Antibody Paraffin Embedded Tissue: Human Kidney Cellular Data: Epithelial cells of renal tubule Antibody Concentration: 4.0-8.0 µg/ml Magnification: 400X