

Datasheet for ABIN2779015
anti-SNRPD1 antibody (N-Term)

5 Images

[Go to Product page](#)

Overview

Quantity:	100 µL
Target:	SNRPD1
Binding Specificity:	N-Term
Reactivity:	Human, Mouse, Rat, Dog, Rabbit, Cow, Guinea Pig, Horse, Zebrafish (Danio rerio), Saccharomyces cerevisiae
Host:	Rabbit
Clonality:	Polyclonal
Conjugate:	This SNRPD1 antibody is un-conjugated
Application:	Western Blotting (WB), Immunohistochemistry (IHC)

Product Details

Immunogen:	The immunogen is a synthetic peptide directed towards the N terminal region of human SNRPD1
Sequence:	NGTQVHGTIT GVDVSMNTHL KAVKMTLKNR EPVQLETLSI RGNNIRYFIL
Predicted Reactivity:	Cow: 100%, Dog: 100%, Guinea Pig: 100%, Horse: 100%, Human: 100%, Mouse: 100%, Rabbit: 100%, Rat: 100%, Yeast: 79%, Zebrafish: 86%
Characteristics:	This is a rabbit polyclonal antibody against SNRPD1. It was validated on Western Blot and immunohistochemistry.
Purification:	Affinity Purified

Target Details

Target:	SNRPD1
Alternative Name:	SNRPD1 (SNRPD1 Products)
Background:	<p>SNRPD1 is a small nuclear ribonucleoprotein that belongs to the SNRNP core protein family. The protein may act as a charged protein scaffold to promote SNRNP assembly or strengthen SNRNP-SNRNP interactions through nonspecific electrostatic contacts with RNA. This gene encodes a small nuclear ribonucleoprotein that belongs to the SNRNP core protein family. The protein may act as a charged protein scaffold to promote SNRNP assembly or strengthen SNRNP-SNRNP interactions through nonspecific electrostatic contacts with RNA.</p> <p>Alias Symbols: SMD1, SNRPD, Sm-D1, HsT2456</p> <p>Protein Interaction Partner: CLNS1A, WWOX, ASB2, ASB1, EZH2, SUZ12, EED, RNF2, EIF5, PDHB, SCLY, FERMT2, PRPF4B, SRPK2, SRPK3, EGFR, CD81, IGSF8, NPM1, ICAM1, PAN2, VCAM1, U2AF1, ITGA4, IL7R, IFIT3, IFIT1, IFIT2, FN1, LSM3, SMURF1, EIF4A3, MAGOH, CTNNB1, ESR1, SNRPB, SNRPA1, SNRNP70,</p> <p>Protein Size: 119</p>
Molecular Weight:	13 kDa
Gene ID:	6632
NCBI Accession:	NM_006938 , NP_008869
UniProt:	P62314
Pathways:	Ribonucleoprotein Complex Subunit Organization

Application Details

Application Notes:	Optimal working dilutions should be determined experimentally by the investigator.
Comment:	Antigen size: 119 AA
Restrictions:	For Research Use only

Handling

Format:	Liquid
Concentration:	Lot specific
Buffer:	Liquid. Purified antibody supplied in 1x PBS buffer with 0.09 % (w/v) sodium azide and 2 % sucrose.
Preservative:	Sodium azide

Handling

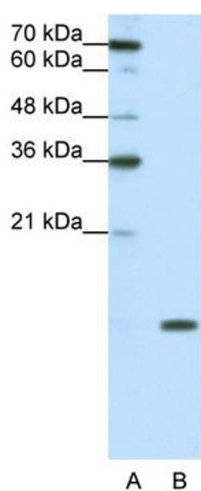
Precaution of Use: This product contains Sodium azide: a POISONOUS AND HAZARDOUS SUBSTANCE which should be handled by trained staff only.

Handling Advice: Avoid repeated freeze-thaw cycles.

Storage: -20 °C

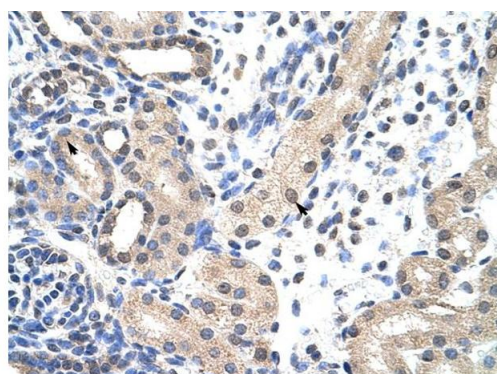
Storage Comment: For short term use, store at 2-8°C up to 1 week. For long term storage, store at -20°C in small aliquots to prevent freeze-thaw cycles.

Images



Western Blotting

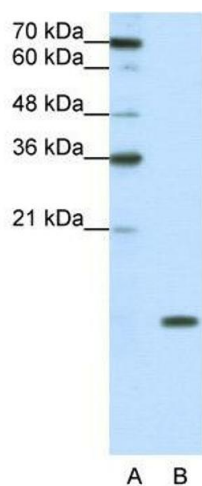
Image 1. WB Suggested Anti-SNRPD1 Antibody Titration: 0.2-1 ug/ml ELISA Titer: 1:312500 Positive Control: Jurkat cell lysate SNRPD1 is strongly supported by BioGPS gene expression data to be expressed in Human Jurkat cells



Rabbit Anti-SNRPD1 Antibody
Catalog Number: ARP40693
Lot Number: QC9711
Paraffin Embedded Tissue: Human Kidney
Cells with Positive label: Epithelial cells of renal tubule (Indicated with Arrows)
Antibody Concentration: 4.0-8.0 µg/ml
Magnification: 400X

Immunohistochemistry

Image 2. Rabbit Anti-SNRPD1 Antibody Paraffin Embedded Tissue: Human Kidney Cellular Data: Epithelial cells of renal tubule Antibody Concentration: 4.0-8.0 ug/ml Magnification: 400X



Western Blotting

Image 3. WB Suggested Anti-SNRPD1

Antibody Titration: 0.2-1 µg/mL ELISA Titer: 1:12500

Positive Control: Jurkat cell lysate

SNRPD1 is strongly supported by BioGPS gene expression data to be expressed in Human Jurkat cells

Please check the [product details page](#) for more images. Overall 5 images are available for ABIN2779015.