



[Go to Product page](#)

Datasheet for ABIN2779017

anti-NUDT21 antibody (N-Term)

2 Images

Overview

Quantity:	100 µL
Target:	NUDT21
Binding Specificity:	N-Term
Reactivity:	Human, Mouse, Rat, Zebrafish (Danio rerio), Dog, Rabbit, Cow, Guinea Pig, Horse
Host:	Rabbit
Clonality:	Polyclonal
Conjugate:	This NUDT21 antibody is un-conjugated
Application:	Western Blotting (WB), Immunohistochemistry (IHC)

Product Details

Immunogen:	The immunogen is a synthetic peptide directed towards the N terminal region of human NUDT21
Sequence:	TGWPRGVTQF GNKYIQQTKP LTLERTINLY PLTNYTFGTK EPLYEKDSSV
Predicted Reactivity:	Cow: 100%, Dog: 100%, Guinea Pig: 100%, Horse: 100%, Human: 100%, Mouse: 100%, Rabbit: 100%, Rat: 100%, Zebrafish: 100%
Characteristics:	This is a rabbit polyclonal antibody against NUDT21. It was validated on Western Blot and immunohistochemistry.
Purification:	Protein A purified

Target Details

Target:	NUDT21
---------	--------

Target Details

Alternative Name: [NUDT21 \(NUDT21 Products\)](#)

Background: NUDT21 is one subunit of a cleavage factor required for 3' RNA cleavage and polyadenylation processing. The interaction of the protein with the RNA is one of the earliest steps in the assembly of the 3' end processing complex and facilitates the recruitment of other processing factors. The protein encoded by this gene is one subunit of a cleavage factor required for 3' RNA cleavage and polyadenylation processing. The interaction of the protein with the RNA is one of the earliest steps in the assembly of the 3' end processing complex and facilitates the recruitment of other processing factors. This gene encodes the 25kD subunit of the protein complex, which is composed of four polypeptides.

Alias Symbols: CPSF5, CFIM25

Protein Interaction Partner: CPSF7, NUDT21, HUWE1, TRIM27, GOLGA2, FUS, UBC, STAU1, FXR2, RPA3, RPA2, RPA1, ASB12, RNF2, EZH2, ITCH, WWOX, TCERG1, CARM1, EIF3A, RPL18, NEDD4, EIF3CL, PRPF4B, SRPK2, SRPK1, CPSF6, NPM1, CD81, FN1, VCAM1, ITGA4, SMURF1, S100A13, RPS3, HDAC2, SKIV2L2, FA

Protein Size: 227

Molecular Weight: 25 kDa

Gene ID: 11051

NCBI Accession: [NM_007006](#), [NP_008937](#)

UniProt: [O43809](#)

Application Details

Application Notes: Optimal working dilutions should be determined experimentally by the investigator.

Comment: Antigen size: 227 AA

Restrictions: For Research Use only

Handling

Format: Liquid

Concentration: Lot specific

Buffer: Liquid. Purified antibody supplied in 1x PBS buffer with 0.09 % (w/v) sodium azide and 2 % sucrose.

Preservative: Sodium azide

Handling

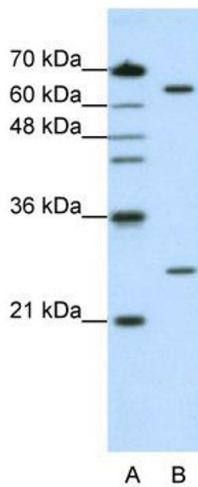
Precaution of Use: This product contains Sodium azide: a POISONOUS AND HAZARDOUS SUBSTANCE which should be handled by trained staff only.

Handling Advice: Avoid repeated freeze-thaw cycles.

Storage: -20 °C

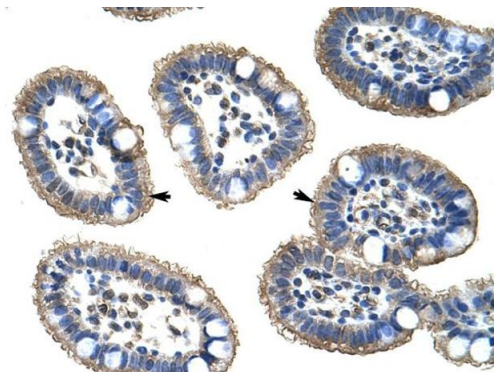
Storage Comment: For short term use, store at 2-8°C up to 1 week. For long term storage, store at -20°C in small aliquots to prevent freeze-thaw cycles.

Images



Western Blotting

Image 1. WB Suggested Anti-NUDT21 Antibody Titration: 1.25ug/ml ELISA Titer: 1:312500 Positive Control: HepG2 cell lysate



Immunohistochemistry

Image 2. Rabbit Anti-NUDT21 Antibody Paraffin Embedded Tissue: Human Intestine Cellular Data: Epithelial cells of intestinal villas Antibody Concentration: 4.0-8.0 ug/ml Magnification: 400X

Rabbit Anti-NUDT21 Antibody
Catalog Number: ARP40695
Lot Number: QC9815
Paraffin Embedded Tissue: Human Intestine
Cells with Positive label: Epithelial cells of intestinal villus (Indicated with Arrows)
Antibody Concentration: 4.0-8.0 µg/ml
Magnification: 400X