

Datasheet for ABIN2779018
anti-CPSF6 antibody (Middle Region)[Go to Product page](#)

4 Images

Overview

Quantity:	100 µL
Target:	CPSF6
Binding Specificity:	Middle Region
Reactivity:	Human, Mouse, Rat, Dog, Rabbit, Cow, Guinea Pig, Zebrafish (Danio rerio), Horse
Host:	Rabbit
Clonality:	Polyclonal
Conjugate:	This CPSF6 antibody is un-conjugated
Application:	Western Blotting (WB), Immunohistochemistry (IHC), Immunofluorescence (IF)

Product Details

Immunogen:	The immunogen is a synthetic peptide directed towards the middle region of human CPSF6
Sequence:	PPLAGPPNRG DRPPPPVLFP GQPFGQPPLG PLPPGPPPPV PGYGPPPGPP
Predicted Reactivity:	Cow: 100%, Dog: 100%, Guinea Pig: 100%, Horse: 100%, Human: 100%, Mouse: 100%, Rabbit: 100%, Rat: 100%, Zebrafish: 79%
Characteristics:	This is a rabbit polyclonal antibody against CPSF6. It was validated on Western Blot and immunohistochemistry.
Purification:	Protein A purified

Target Details

Target:	CPSF6
---------	-------

Target Details

Alternative Name:	CPSF6 (CPSF6 Products)
Background:	<p>CPSF6 is one subunit of a cleavage factor required for 3' RNA cleavage and polyadenylation processing. The interaction of the protein with the RNA is one of the earliest steps in the assembly of the 3' end processing complex and facilitates the recruitment of other processing factors. The cleavage factor complex is composed of four polypeptides. The protein encoded by this gene is one subunit of a cleavage factor required for 3' RNA cleavage and polyadenylation processing. The interaction of the protein with the RNA is one of the earliest steps in the assembly of the 3' end processing complex and facilitates the recruitment of other processing factors. The cleavage factor complex is composed of four polypeptides. This gene encodes the 68kD subunit. It has a domain organization reminiscent of spliceosomal proteins.</p> <p>Alias Symbols: CFIM, CFIM68, HPBR11-4, HPBR11-7</p> <p>Protein Interaction Partner: ARMC7, OTUB2, TOLLIP, PPIL1, FUS, FXR2, WWOX, EZH2, SUZ12, EED, rev, ITCH, PRPF40A, WBP4, TCERG1, NEDD4, APBB1, SRPK2, WWP1, NUDT21, LMNA, CD81, TP63, UBC, NPM1, FN1, DAB2, CSNK2A1, SMURF1, BARD1, MDC1, ZBTB8B, CPSF7, NUP107, TBC1D2, WBP11, PUF60, U2AF2,</p> <p>Protein Size: 551</p>
Molecular Weight:	61 kDa
Gene ID:	11052
NCBI Accession:	NM_007007 , NP_008938
UniProt:	Q16630

Application Details

Application Notes:	Optimal working dilutions should be determined experimentally by the investigator.
Comment:	Antigen size: 551 AA
Restrictions:	For Research Use only

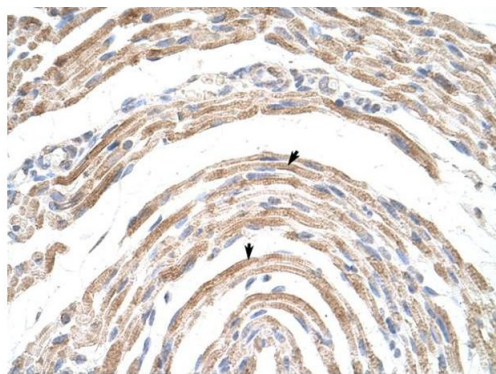
Handling

Format:	Liquid
Concentration:	Lot specific
Buffer:	Liquid. Purified antibody supplied in 1x PBS buffer with 0.09 % (w/v) sodium azide and 2 % sucrose.

Handling

Preservative:	Sodium azide
Precaution of Use:	This product contains Sodium azide: a POISONOUS AND HAZARDOUS SUBSTANCE which should be handled by trained staff only.
Handling Advice:	Avoid repeated freeze-thaw cycles.
Storage:	-20 °C
Storage Comment:	For short term use, store at 2-8°C up to 1 week. For long term storage, store at -20°C in small aliquots to prevent freeze-thaw cycles.

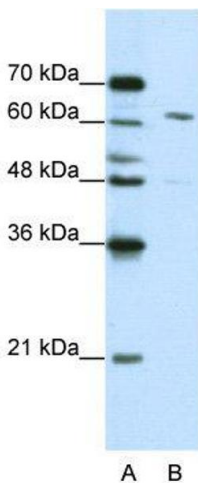
Images



Rabbit Anti-CPSF6 Antibody
Catalog Number: ARP40697
Lot Number: QC9816
Paraffin Embedded Tissue: Human Muscle
Cells with Positive label: Skeletal muscle cells (Indicated with Arrows)
Antibody Concentration: 16.0 µg/ml
Magnification: 400X

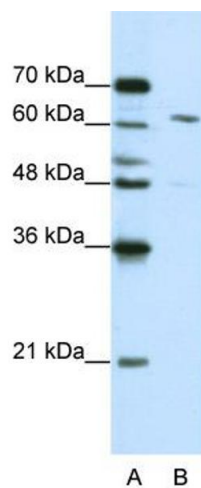
Immunohistochemistry

Image 1. Rabbit Anti-CPSF6 Antibody Paraffin Embedded
Tissue: Human Muscle Cellular Data: Skeletal muscle cells
Antibody Concentration: 16.0 ug/ml Magnification: 400X



Western Blotting

Image 2. WB Suggested Anti-CPSF6
Antibody Titration: 0.3125 µg/mL ELISA Titer: 1:1562500
Positive Control: Jurkat cell lysate
CPSF6 is strongly supported by BioGPS gene expression data to be expressed in Human Jurkat cells



Western Blotting

Image 3. WB Suggested Anti-CPSF6 Antibody Titration: 0.3125ug/ml ELISA Titer: 1:1562500 Positive Control: Jurkat cell lysate CPSF6 is strongly supported by BioGPS gene expression data to be expressed in Human Jurkat cells

Please check the [product details page](#) for more images. Overall 4 images are available for ABIN2779018.