

Datasheet for ABIN2779026  
**anti-XPOT antibody (Middle Region)**

## 3 Images

[Go to Product page](#)

## Overview

Quantity:	100 µL
Target:	XPOT
Binding Specificity:	Middle Region
Reactivity:	Human, Mouse, Rat, Horse, Cow, Dog, Rabbit, Guinea Pig, Saccharomyces cerevisiae, Zebrafish (Danio rerio)
Host:	Rabbit
Clonality:	Polyclonal
Conjugate:	This XPOT antibody is un-conjugated
Application:	Western Blotting (WB), Immunohistochemistry (IHC)

## Product Details

Immunogen:	The immunogen is a synthetic peptide directed towards the middle region of human XPOT
Sequence:	TVLSQQKAN VEAIMLAVMK KLTYDEEYNF ENEGEDEAMF VEYRKQLKLL
Predicted Reactivity:	Cow: 100%, Dog: 100%, Guinea Pig: 100%, Horse: 100%, Human: 100%, Mouse: 100%, Rabbit: 100%, Rat: 100%, Yeast: 75%, Zebrafish: 93%
Characteristics:	This is a rabbit polyclonal antibody against XPOT. It was validated on Western Blot using a cell lysate as a positive control.
Purification:	Affinity Purified

## Target Details

Target:	XPOT
---------	------

## Target Details

Alternative Name:	XPOT ( <a href="#">XPOT Products</a> )
Background:	<p>XPOT belonging to the RAN-GTPase exportin family that mediates export of tRNA from the nucleus to the cytoplasm. Translocation of tRNA to the cytoplasm occurs once exportin has bound both tRNA and GTP-bound RAN. This gene encodes a protein belonging to the RAN-GTPase exportin family that mediates export of tRNA from the nucleus to the cytoplasm. Translocation of tRNA to the cytoplasm occurs once exportin has bound both tRNA and GTP-bound RAN.</p> <p>Alias Symbols: XPO3</p> <p>Protein Interaction Partner: SUMO2, SUMO3, UBC, RNF2, MCMBP, PAPSS1, NFRKB, APEX1, FBXO6, EGFR, IQCB1, CA9, ECT2, TXNL1, USP7, UBD, RAN, CUL5, FBXO25, SIRT7, EBNA-LP, HDAC5, MYC, CAMKK2, CLN3, AIRE, XPO7, NUP153, RANBP2, HDLBP, NUP214,</p> <p>Protein Size: 962</p>
Molecular Weight:	110 kDa
Gene ID:	11260
NCBI Accession:	<a href="#">NM_007235</a> , <a href="#">NP_009166</a>
UniProt:	<a href="#">O43592</a>

## Application Details

Application Notes:	Optimal working dilutions should be determined experimentally by the investigator.
Comment:	Antigen size: 962 AA
Restrictions:	For Research Use only

## Handling

Format:	Liquid
Concentration:	Lot specific
Buffer:	Liquid. Purified antibody supplied in 1x PBS buffer with 0.09 % (w/v) sodium azide and 2 % sucrose.
Preservative:	Sodium azide
Precaution of Use:	This product contains Sodium azide: a POISONOUS AND HAZARDOUS SUBSTANCE which should be handled by trained staff only.
Handling Advice:	Avoid repeated freeze-thaw cycles.

Handling

Storage:	-20 °C
Storage Comment:	For short term use, store at 2-8°C up to 1 week. For long term storage, store at -20°C in small aliquots to prevent freeze-thaw cycles.

Images

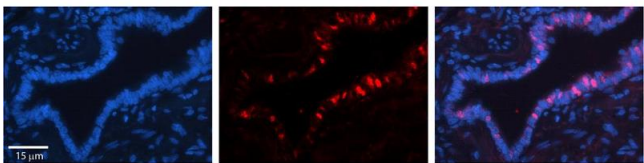


Western Blotting

**Image 1.** WB Suggested Anti-XPOT  
Antibody Titration: 0.2-1 µg/mL ELISA Titer: 1:2500  
Positive Control: Jurkat cell lysate  
XPOT is supported by BioGPS gene expression data to be expressed in Jurkat

Western Blotting

**Image 2.** WB Suggested Anti-XPOT Antibody Titration: 0.2-1 ug/ml ELISA Titer: 1:62500 Positive Control: Jurkat cell lysate XPOT is supported by BioGPS gene expression data to be expressed in Jurkat



Immunohistochemistry

**Image 3.** Rabbit Anti-XPOT Antibody Formalin Fixed Paraffin Embedded Tissue: Human Bronchial Epithelial Tissue Observed Staining: Cytoplasmic and nuclear Primary Antibody Concentration: 1:100 Other Working Concentrations: 1/600 Secondary Antibody: Donkey anti-Rabbit-Cy3 Secondary Antibody Concentration: 1:200 Magnification: 20X Exposure Time: 0.5 - 2.0 sec