



[Go to Product page](#)

Datasheet for ABIN2779029
anti-ADAT1 antibody (C-Term)

2 Images

Overview

Quantity:	100 µL
Target:	ADAT1
Binding Specificity:	C-Term
Reactivity:	Human, Mouse, Rat, Dog, Horse, Guinea Pig, Cow, Rabbit, Zebrafish (Danio rerio)
Host:	Rabbit
Clonality:	Polyclonal
Conjugate:	This ADAT1 antibody is un-conjugated
Application:	Western Blotting (WB), Immunohistochemistry (IHC)

Product Details

Immunogen:	The immunogen is a synthetic peptide directed towards the C terminal region of human ADAT1
Sequence:	RLVPCGAAIS WSAVPEQPLD VTANGFPQGT TKKTIGSLQA RSQISKVELF
Predicted Reactivity:	Cow: 100%, Dog: 100%, Guinea Pig: 100%, Horse: 100%, Human: 100%, Mouse: 100%, Rabbit: 100%, Rat: 100%, Zebrafish: 79%
Characteristics:	This is a rabbit polyclonal antibody against ADAT1. It was validated on Western Blot and immunohistochemistry.
Purification:	Protein A purified

Target Details

Target:	ADAT1
---------	-------

Target Details

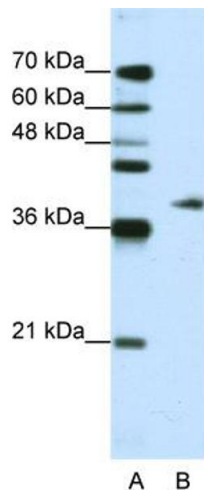
Alternative Name:	ADAT1 (ADAT1 Products)
Background:	<p>ADAT1 is a member of the ADAR (adenosine deaminase acting on RNA) family. Using site-specific adenosine modification, the family participates in the pre-mRNA editing of nuclear transcripts. ADAT1, tRNA-specific adenosine deaminase 1, is responsible for the deamination of adenosine 37 to inosine in eukaryotic tRNA.</p> <p>Alias Symbols: HADAT1</p> <p>Protein Interaction Partner: UBC, ELAVL1,</p> <p>Protein Size: 353</p>
Molecular Weight:	39 kDa
Gene ID:	23536
NCBI Accession:	NM_012091
UniProt:	Q9NVB7

Application Details

Application Notes:	Optimal working dilutions should be determined experimentally by the investigator.
Comment:	Antigen size: 353 AA
Restrictions:	For Research Use only

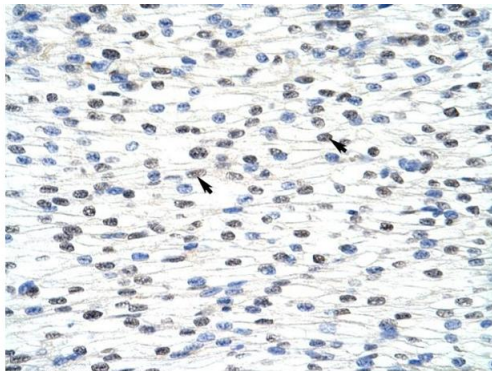
Handling

Format:	Liquid
Concentration:	Lot specific
Buffer:	Liquid. Purified antibody supplied in 1x PBS buffer with 0.09 % (w/v) sodium azide and 2 % sucrose.
Preservative:	Sodium azide
Precaution of Use:	This product contains Sodium azide: a POISONOUS AND HAZARDOUS SUBSTANCE which should be handled by trained staff only.
Handling Advice:	Avoid repeated freeze-thaw cycles.
Storage:	-20 °C
Storage Comment:	For short term use, store at 2-8°C up to 1 week. For long term storage, store at -20°C in small aliquots to prevent freeze-thaw cycles.



Western Blotting

Image 1. WB Suggested Anti-ADAT1 Antibody Titration: 1.25ug/ml ELISA Titer: 1:62500 Positive Control: Jurkat cell lysate



Immunohistochemistry

Image 2. Rabbit Anti-ADAT1 Antibody Paraffin Embedded Tissue: Human Heart Cellular Data: Myocardial cells Antibody Concentration: 4.0-8.0 ug/ml Magnification: 400X

Rabbit Anti-ADAT1 Antibody
Catalog Number: ARP40717
Lot Number: QC9826
Paraffin Embedded Tissue: Human Heart
Cells with Positive label: Myocardial cells (Indicated with Arrows)
Antibody Concentration: 4.0-8.0 µg/ml
Magnification: 400X