

Datasheet for ABIN2779032
anti-LSM4 antibody (Middle Region)

3 Images

1 Publication

[Go to Product page](#)

Overview

Quantity:	100 µL
Target:	LSM4
Binding Specificity:	Middle Region
Reactivity:	Human, Mouse, Rat, Cow, Dog, Guinea Pig, Horse
Host:	Rabbit
Clonality:	Polyclonal
Conjugate:	This LSM4 antibody is un-conjugated
Application:	Western Blotting (WB), Immunohistochemistry (IHC)

Product Details

Immunogen:	The immunogen is a synthetic peptide directed towards the middle region of human LSM4
Sequence:	GRGGLQQKQK QKGRGMGGAG RGVFGGRGRG GIPGTGRGQP EKKPGRQAGK
Predicted Reactivity:	Cow: 100%, Dog: 100%, Guinea Pig: 100%, Horse: 100%, Human: 100%, Mouse: 93%, Rat: 93%
Characteristics:	This is a rabbit polyclonal antibody against LSM4. It was validated on Western Blot using a cell lysate as a positive control.
Purification:	Affinity Purified

Target Details

Target:	LSM4
Alternative Name:	LSM4 (LSM4 Products)

Target Details

Background:	<p>Sm-like proteins were identified in a variety of organisms based on sequence homology with the Sm protein family (see SNRPD2, MIM 601061). Sm-like proteins contain the Sm sequence motif, which consists of 2 regions separated by a linker of variable length that folds as a loop. The Sm-like proteins are thought to form a stable heteromer present in tri-snRNP particles, which are important for pre-mRNA splicing. Sm-like proteins were identified in a variety of organisms based on sequence homology with the Sm protein family (see SNRPD2, MIM 601061). Sm-like proteins contain the Sm sequence motif, which consists of 2 regions separated by a linker of variable length that folds as a loop. The Sm-like proteins are thought to form a stable heteromer present in tri-snRNP particles, which are important for pre-mRNA splicing.[supplied by OMIM]. Publication Note: This RefSeq record includes a subset of the publications that are available for this gene. Please see the Entrez Gene record to access additional publications.</p> <p>Alias Symbols: YER112W, GRP</p> <p>Protein Interaction Partner: IKZF1, CALCOCO2, PSTPIP1, L3MBTL3, ZBTB10, UBC, WWOX, SMIM14, RHOXF2, LSM8, LSM7, LSM1, COX5B, TOE1, SMU1, SLC22A2, RMI2, PYROXD1, LSM2, VAC14, WDR44, LSM3, LSM5, LSM6, HUWE1, PPIP5K1, PRPF18, DDX39B, TCEA2, SGTA, RAD23A, PPIB, MTR, GTF2B, TOP1, RNU6ATAC,</p> <p>Protein Size: 139</p>
-------------	---

Molecular Weight:	15 kDa
-------------------	--------

Gene ID:	25804
----------	-------

NCBI Accession:	NM_012321 , NP_036453
-----------------	---

UniProt:	Q9Y4Z0
----------	------------------------

Application Details

Application Notes:	Optimal working dilutions should be determined experimentally by the investigator.
--------------------	--

Comment:	Antigen size: 139 AA
----------	----------------------

Restrictions:	For Research Use only
---------------	-----------------------

Handling

Format:	Liquid
---------	--------

Concentration:	Lot specific
----------------	--------------

Buffer:	Liquid. Purified antibody supplied in 1x PBS buffer with 0.09 % (w/v) sodium azide and 2 %
---------	--

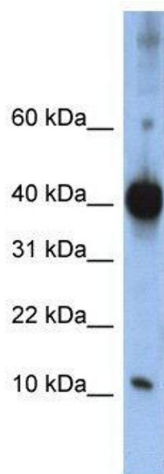
Handling

	sucrose.
Preservative:	Sodium azide
Precaution of Use:	This product contains Sodium azide: a POISONOUS AND HAZARDOUS SUBSTANCE which should be handled by trained staff only.
Handling Advice:	Avoid repeated freeze-thaw cycles.
Storage:	-20 °C
Storage Comment:	For short term use, store at 2-8°C up to 1 week. For long term storage, store at -20°C in small aliquots to prevent freeze-thaw cycles.

Publications

Product cited in:	van Dijk, Schilders, Pruijn: "Human cell growth requires a functional cytoplasmic exosome, which is involved in various mRNA decay pathways." in: RNA (New York, N.Y.) , Vol. 13, Issue 7, pp. 1027-35, (2007) (PubMed).
-------------------	---

Images



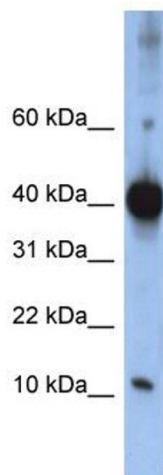
Western Blotting

Image 1. WB Suggested Anti-LSM4

Antibody Titration: 0.2-1 µg/mL ELISA Titer: 1:1562500

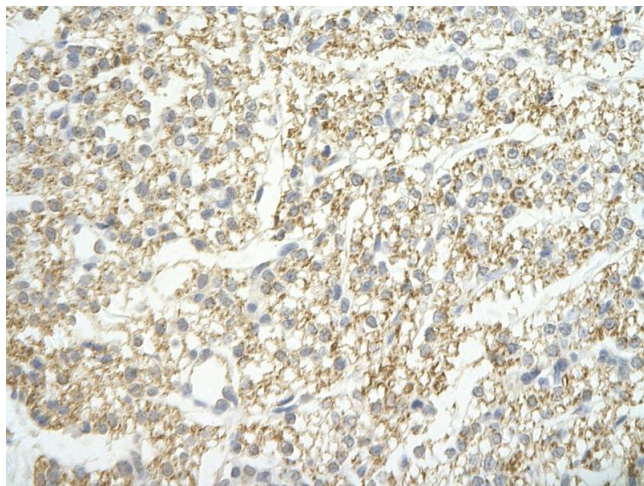
Positive Control: Jurkat cell lysate

LSM4 is strongly supported by BioGPS gene expression data to be expressed in Human Jurkat cells



Western Blotting

Image 2. WB Suggested Anti-LSM4 Antibody Titration: 0.2-1 ug/ml ELISA Titer: 1:1562500 Positive Control: Jurkat cell lysate LSM4 is strongly supported by BioGPS gene expression data to be expressed in Human Jurkat cells



Immunohistochemistry

Image 3. Rabbit Anti-LSM4 antibody Paraffin Embedded Tissue: Human Heart cell Cellular Data: cardiac cell of renal tubule Antibody Concentration: 4.0-8.0 ug/ml Magnification: 400X