



[Go to Product page](#)

Datasheet for ABIN2779040

anti-RBM15B antibody (C-Term)

1 Image

Overview

Quantity:	100 µL
Target:	RBM15B
Binding Specificity:	C-Term
Reactivity:	Human, Mouse, Rat, Pig, Rabbit, Cow, Dog, Guinea Pig
Host:	Rabbit
Clonality:	Polyclonal
Conjugate:	This RBM15B antibody is un-conjugated
Application:	Western Blotting (WB)

Product Details

Sequence:	SPYEERSRTK GGGQQSERGS DRTPERSRKE NHSSEGTKES GSNLSNSRH
Predicted Reactivity:	Cow: 100%, Dog: 93%, Guinea Pig: 93%, Human: 100%, Mouse: 100%, Pig: 100%, Rabbit: 79%, Rat: 100%
Characteristics:	This is a rabbit polyclonal antibody against Rbm15b. It was validated on Western Blot.
Purification:	Affinity Purified

Target Details

Target:	RBM15B
Alternative Name:	Rbm15b (RBM15B Products)
Background:	Rbm15b may function in the regulation of alternative or illicit splicing.

Target Details

Alias Symbols: 1810017N16Rik

Protein Size: 564

Molecular Weight: 62 kDa

Gene ID: 109095

NCBI Accession: [NM_175402](#), [NP_780611](#)

UniProt: [Q6PHZ5](#)

Application Details

Application Notes: Optimal working dilutions should be determined experimentally by the investigator.

Comment: Antigen size: 564 AA

Restrictions: For Research Use only

Handling

Format: Liquid

Concentration: Lot specific

Buffer: Liquid. Purified antibody supplied in 1x PBS buffer with 0.09 % (w/v) sodium azide and 2 % sucrose.

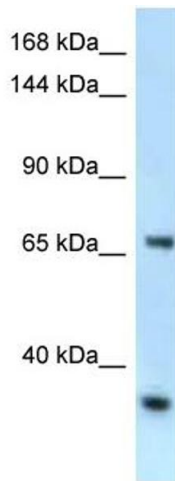
Preservative: Sodium azide

Precaution of Use: This product contains Sodium azide: a POISONOUS AND HAZARDOUS SUBSTANCE which should be handled by trained staff only.

Handling Advice: Avoid repeated freeze-thaw cycles.

Storage: -20 °C

Storage Comment: For short term use, store at 2-8°C up to 1 week. For long term storage, store at -20°C in small aliquots to prevent freeze-thaw cycles.



Western Blotting

Image 1. WB Suggested Anti-Rbm15b Antibody Titration:
1.0 ug/ml Positive Control: Mouse Heart