

Datasheet for ABIN2779041
anti-CPSF1 antibody (Middle Region)[Go to Product page](#)

1 Image

Overview

Quantity:	100 µL
Target:	CPSF1
Binding Specificity:	Middle Region
Reactivity:	Human, Rat, Horse
Host:	Rabbit
Clonality:	Polyclonal
Conjugate:	This CPSF1 antibody is un-conjugated
Application:	Western Blotting (WB)

Product Details

Immunogen:	The immunogen is a synthetic peptide directed towards the middle region of human CPSF1
Sequence:	GCYDMWTVIA PVRKEEEDNP KEGTEQEPS TTPEADDDGR RHGFLILSRE
Predicted Reactivity:	Horse: 79%, Human: 100%, Rat: 77%
Characteristics:	This is a rabbit polyclonal antibody against CPSF1. It was validated on Western Blot using a cell lysate as a positive control.
Purification:	Affinity Purified

Target Details

Target:	CPSF1
Alternative Name:	CPSF1 (CPSF1 Products)

Target Details

Background:	<p>CPSF1 is a component of the cleavage and polyadenylation specificity factor (CPSF) complex that plays a key role in pre-mRNA 3'-end formation, recognizing the AAUAAA signal sequence and interacting with poly(A) polymerase and other factors to bring about cleavage and poly(A) addition. This subunit is involved in the RNA recognition step of the polyadenylation reaction.</p> <p>Alias Symbols: CPSF160, HSU37012, P/cl.18</p> <p>Protein Interaction Partner: REL, RBBP6, UBC, STAU1, LGR4, WWOX, RPA3, RPA2, RPA1, EED, EZH2, NEDD4, TARDBP, ICK, CLK2, HDAC6, NPM1, IL7R, HMOX1, TUT1, FIP1L1, RNPC3, WDR33, CPSF2, MED8, CPSF3, GTF3C3, POLR2A, COPS6, CUL3, SIRT7, SMARCAD1, CSTF2T, PAPOLA, CSTF3, GLIS2, RRAGA, TBP, TA</p> <p>Protein Size: 1443</p>
Molecular Weight:	161 kDa
Gene ID:	29894
NCBI Accession:	NM_013291 , NP_037423
UniProt:	Q10570

Application Details

Application Notes:	Optimal working dilutions should be determined experimentally by the investigator.
Comment:	Antigen size: 1443 AA
Restrictions:	For Research Use only

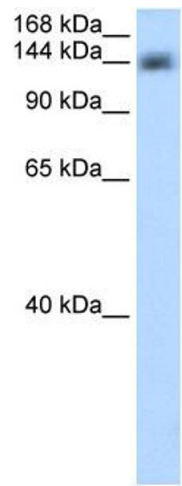
Handling

Format:	Liquid
Concentration:	Lot specific
Buffer:	Liquid. Purified antibody supplied in 1x PBS buffer with 0.09 % (w/v) sodium azide and 2 % sucrose.
Preservative:	Sodium azide
Precaution of Use:	This product contains Sodium azide: a POISONOUS AND HAZARDOUS SUBSTANCE which should be handled by trained staff only.
Handling Advice:	Avoid repeated freeze-thaw cycles.
Storage:	-20 °C

Handling

Storage Comment: For short term use, store at 2-8°C up to 1 week. For long term storage, store at -20°C in small aliquots to prevent freeze-thaw cycles.

Images



Western Blotting

Image 1. WB Suggested Anti-CPSF1 Antibody Titration: 0.2-1 ug/ml ELISA Titer: 1:62500 Positive Control: Transfected 293T