



[Go to Product page](#)

Datasheet for ABIN2779042
anti-OLA1 antibody (N-Term)

2 Images

1 Publication

Overview

Quantity:	100 µL
Target:	OLA1
Binding Specificity:	N-Term
Reactivity:	Human, Mouse, Rat, Dog, Cow, Rabbit, Guinea Pig, Horse
Host:	Rabbit
Clonality:	Polyclonal
Conjugate:	This OLA1 antibody is un-conjugated
Application:	Western Blotting (WB), Immunohistochemistry (IHC)

Product Details

Immunogen:	The immunogen is a synthetic peptide directed towards the N terminal region of human GTPBP9
Sequence:	QGLGNAFLSH ISACDGIFHL TRAFEDDDIT HVEGSVDPIR DIEIIHEELQ
Predicted Reactivity:	Cow: 100%, Dog: 100%, Guinea Pig: 100%, Horse: 100%, Human: 100%, Mouse: 100%, Rabbit: 100%, Rat: 100%
Characteristics:	This is a rabbit polyclonal antibody against GTPBP9. It was validated on Western Blot and immunohistochemistry.
Purification:	Affinity Purified

Target Details

Target:	OLA1
---------	------

Target Details

Alternative Name: [GTPBP9 \(OLA1 Products\)](#)

Background: GTPBP9 belongs to the GTP1/OBG family and the function remains unknown.
Alias Symbols: DOC45, GBP45, GTBP9, GTPBP9, PTD004
Protein Interaction Partner: HUWE1, BRCA1, BARD1, UBC, TUBG1, ZNF346, MAPRE1, YWHAZ, TXNRD1, SNRPF, SNRPE, RAP1GDS1, HDGF, GSS, ASNS, ACAT2, BAG3, SOX2, HMGA1, gag, STUB1, HSPA4, FN1, ARPC1A, NDUFA7, NDUFA2, GAPDH, ALDOC, GRK5, RAD21, BCL6, ASCC2, PRMT5, PUF60,
Protein Size: 396

Molecular Weight: 44 kDa

Gene ID: 29789

NCBI Accession: [NM_013341](#), [NP_037473](#)

UniProt: [Q9NTK5](#)

Application Details

Application Notes: Optimal working dilutions should be determined experimentally by the investigator.

Comment: Antigen size: 396 AA

Restrictions: For Research Use only

Handling

Format: Liquid

Concentration: Lot specific

Buffer: Liquid. Purified antibody supplied in 1x PBS buffer with 0.09 % (w/v) sodium azide and 2 % sucrose.

Preservative: Sodium azide

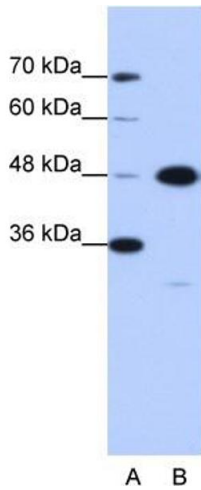
Precaution of Use: This product contains Sodium azide: a POISONOUS AND HAZARDOUS SUBSTANCE which should be handled by trained staff only.

Handling Advice: Avoid repeated freeze-thaw cycles.

Storage: -20 °C

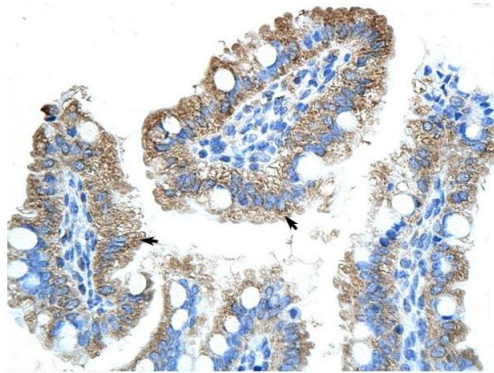
Storage Comment: For short term use, store at 2-8°C up to 1 week. For long term storage, store at -20°C in small aliquots to prevent freeze-thaw cycles.

Product cited in: Sweetman, Münsterberg: "The vertebrate spalt genes in development and disease." in: **Developmental biology**, Vol. 293, Issue 2, pp. 285-93, (2006) ([PubMed](#)).



Western Blotting

Image 1. WB Suggested Anti-GTPBP9 Antibody Titration: 0.2-1 ug/ml ELISA Titer: 1:62500 Positive Control: Jurkat cell lysate



Rabbit Anti-GTPBP9 Antibody
Catalog Number: ARP40744
Lot Number: QC9836
Paraffin Embedded Tissue: Human Intestine
Cells with Positive label: Epithelial cells of intestinal villus (Indicated with Arrows)
Antibody Concentration: 4.0-8.0 µg/ml
Magnification: 400X

Immunohistochemistry

Image 2. Rabbit Anti-GTPBP9 Antibody Paraffin Embedded Tissue: Human Intestine Cellular Data: Epithelial cells of intestinal villas Antibody Concentration: 4.0-8.0 ug/ml Magnification: 400X