



[Go to Product page](#)

Datasheet for ABIN2779045
anti-EWSR1 antibody (Middle Region)

5 Images

Overview

Quantity:	100 µL
Target:	EWSR1
Binding Specificity:	Middle Region
Reactivity:	Human, Mouse, Rat, Cow, Horse, Dog, Guinea Pig, Rabbit
Host:	Rabbit
Clonality:	Polyclonal
Conjugate:	This EWSR1 antibody is un-conjugated
Application:	Western Blotting (WB), Immunohistochemistry (IHC)

Product Details

Immunogen:	The immunogen is a synthetic peptide directed towards the middle region of human EWSR1
Sequence:	QPSSYGQSS YGQQSSYGQQ PPTSYPPTG SYSQAPSQYS QQSSSYGQSS
Predicted Reactivity:	Cow: 100%, Dog: 100%, Guinea Pig: 100%, Horse: 100%, Human: 100%, Mouse: 100%, Rabbit: 100%, Rat: 100%
Characteristics:	This is a rabbit polyclonal antibody against EWSR1. It was validated on Western Blot using a cell lysate as a positive control.
Purification:	Affinity Purified

Target Details

Target:	EWSR1
---------	-------

Target Details

Alternative Name: [EWSR1 \(EWSR1 Products\)](#)

Background: EWSR1 is a putative RNA binding protein. Mutations in this gene, specifically a t(11,22)(q24,q12) translocation, are known to cause Ewing sarcoma as well as neuroectodermal and various other tumors. Alternative splicing of this gene results in two products. This gene encodes a putative RNA binding protein. Mutations in this gene, specifically a t(11,22)(q24,q12) translocation, are known to cause Ewing sarcoma as well as neuroectodermal and various other tumors. Alternative splicing of this gene results in two products.

Alias Symbols: EWS, bK984G1.4

Protein Interaction Partner: SSBP3, SEC24A, TFG, SEC24D, PEF1, MAPK1IP1L, ATPAF2, TRAF2, TRAF1, PLSCR1, PRR13, UBC, RPA3, RPA2, RPA1, EZH2, SUZ12, RNF2, BMI1, rev, ITCH, WBP4, PRMT1, CCDC7, YY1AP1, MRPS18B, UBD, CD81, RIOK2, NONO, ITGB5, ITGA4, FUS, FN1, EWSR1, EPAS1, EP300, HNRNPUL1

Protein Size: 656

Molecular Weight: 68 kDa

Gene ID: 2130

NCBI Accession: [NM_005243](#), [NP_005234](#)

UniProt: [Q01844](#)

Application Details

Application Notes: Optimal working dilutions should be determined experimentally by the investigator.

Comment: Antigen size: 656 AA

Restrictions: For Research Use only

Handling

Format: Liquid

Concentration: Lot specific

Buffer: Liquid. Purified antibody supplied in 1x PBS buffer with 0.09 % (w/v) sodium azide and 2 % sucrose.

Preservative: Sodium azide

Precaution of Use: This product contains Sodium azide: a POISONOUS AND HAZARDOUS SUBSTANCE which

Handling

should be handled by trained staff only.

Handling Advice: Avoid repeated freeze-thaw cycles.

Storage: -20 °C

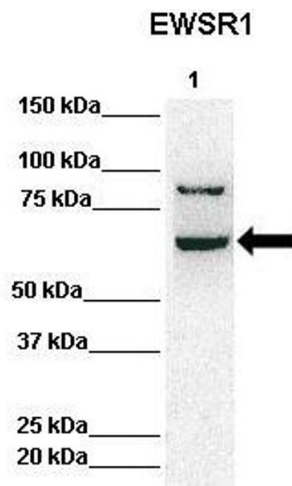
Storage Comment: For short term use, store at 2-8°C up to 1 week. For long term storage, store at -20°C in small aliquots to prevent freeze-thaw cycles.

Images



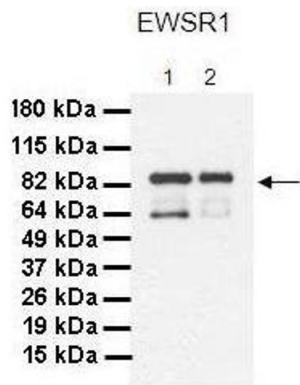
Western Blotting

Image 1. WB Suggested Anti-EWSR1 Antibody Titration: 0.2-1 ug/ml ELISA Titer: 1:312500 Positive Control: HepG2 cell lysate



Western Blotting

Image 2. Lanes: Lane 1: 50ug HeLa Lysate Primary Antibody Dilution: 1:1000 Secondary Antibody: Anti-rabbit-HRP Secondary Antibody Dilution: 1:10,000 Gene Name: EWSR1 Submitted by: Archa Fox, University of Western Australia EWSR1 is strongly supported by BioGPS gene expression data to be expressed in Human HeLa cells



Western Blotting

Image 3. Lanes: 1. 30 ug MiaPaca-2 cell lysate 2. 30 ug Panc-1 cell lysate Primary Antibody Dilution: 1:1000 Secondary Antibody: Goat anti-Rabbit HRP Secondary Antibody Dilution: 1:4000 Gene Name: EWSR1 Submitted by: Dr. Crissy Dudgeon, Ph.D., CINJ

See Immunoblot 3 Data and Customer Feedback for more information

Please check the [product details page](#) for more images. Overall 5 images are available for ABIN2779045.