



[Go to Product page](#)

Datasheet for ABIN2779046
anti-EWSR1 antibody (N-Term)

4 Images

Overview

Quantity:	100 µL
Target:	EWSR1
Binding Specificity:	N-Term
Reactivity:	Human, Mouse, Rat, Cow, Horse, Dog, Guinea Pig, Rabbit, Zebrafish (Danio rerio)
Host:	Rabbit
Clonality:	Polyclonal
Conjugate:	This EWSR1 antibody is un-conjugated
Application:	Western Blotting (WB), Immunohistochemistry (IHC)

Product Details

Immunogen:	The immunogen is a synthetic peptide directed towards the N terminal region of human EWSR1
Sequence:	PQVPGSYPMQ PVTAPPSYPP TSYSSTQPTS YDQSSYSQQN TYGQPSSYGQ
Predicted Reactivity:	Cow: 100%, Dog: 100%, Guinea Pig: 100%, Horse: 100%, Human: 100%, Mouse: 100%, Rabbit: 100%, Rat: 100%, Zebrafish: 77%
Characteristics:	This is a rabbit polyclonal antibody against EWSR1. It was validated on Western Blot using a cell lysate as a positive control.
Purification:	Affinity Purified

Target Details

Target:	EWSR1
---------	-------

Target Details

Alternative Name:	EWSR1 (EWSR1 Products)
Background:	<p>EWSR1 is a putative RNA binding protein. Mutations in this gene, specifically a t(11,22)(q24,q12) translocation, are known to cause Ewing sarcoma as well as neuroectodermal and various other tumors.</p> <p>Alias Symbols: AC002059.7, EWS, bK984G1.4</p> <p>Protein Interaction Partner: SSBP3, SEC24A, TFG, SEC24D, PEF1, MAPK1IP1L, ATPAF2, TRAF2, TRAF1, PLSCR1, PRR13, UBC, RPA3, RPA2, RPA1, EZH2, SUZ12, RNF2, BMI1, rev, ITCH, WBP4, PRMT1, CCDC7, YY1AP1, MRPS18B, UBD, CD81, RIOK2, NONO, ITGB5, ITGA4, FUS, FN1, EWSR1, EPAS1, EP300, HNRNPUL1</p> <p>Protein Size: 476</p>
Molecular Weight:	52 kDa
Gene ID:	2130
NCBI Accession:	NM_006264
UniProt:	Q01844

Application Details

Application Notes:	Optimal working dilutions should be determined experimentally by the investigator.
Comment:	Antigen size: 476 AA
Restrictions:	For Research Use only

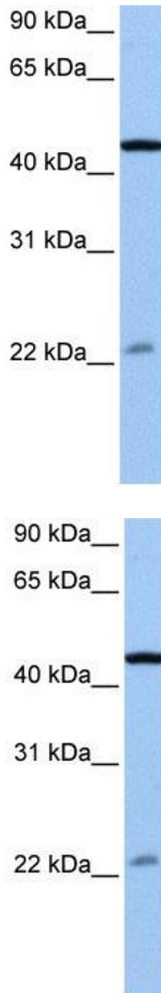
Handling

Format:	Liquid
Concentration:	Lot specific
Buffer:	Liquid. Purified antibody supplied in 1x PBS buffer with 0.09 % (w/v) sodium azide and 2 % sucrose.
Preservative:	Sodium azide
Precaution of Use:	This product contains Sodium azide: a POISONOUS AND HAZARDOUS SUBSTANCE which should be handled by trained staff only.
Handling Advice:	Avoid repeated freeze-thaw cycles.
Storage:	-20 °C

Handling

Storage Comment: For short term use, store at 2-8°C up to 1 week. For long term storage, store at -20°C in small aliquots to prevent freeze-thaw cycles.

Images

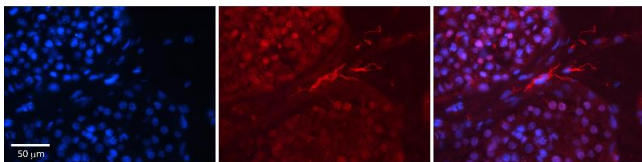


Western Blotting

Image 1. WB Suggested Anti-EWSR1 Antibody Titration: 0.2-1 µg/ml Positive Control: Jurkat cell lysate EWSR1 is strongly supported by BioGPS gene expression data to be expressed in Human Jurkat cells

Western Blotting

Image 2. WB Suggested Anti-EWSR1 Antibody Titration: 0.2-1 µg/mL Positive Control: Jurkat cell lysate EWSR1 is strongly supported by BioGPS gene expression data to be expressed in Human Jurkat cells



Immunohistochemistry

Image 3. Rabbit Anti-EWSR1 Antibody Formalin Fixed Paraffin Embedded Tissue: Human Testis Tissue Observed Staining: Cytoplasm, nucleus and plasma membrane in spermatogonia, spermatocytes and smooth muscle cells Primary Antibody Concentration: 1:100 Other Working Concentrations: 1:600 Secondary Antibody: Donkey anti-Rabbit-Cy3 Secondary Antibody Concentration: 1:200 Magnification: 20X Exposure Time: 0.5 - 2.0 sec

Please check the [product details page](#) for more images. Overall 4 images are available for ABIN2779046.