

Datasheet for ABIN2779048
anti-PPP1R8 antibody (N-Term)

3 Images

[Go to Product page](#)

Overview

Quantity:	100 µL
Target:	PPP1R8
Binding Specificity:	N-Term
Reactivity:	Human, Mouse, Rat, Zebrafish (Danio rerio), Cow, Dog, Horse, Rabbit, Guinea Pig
Host:	Rabbit
Clonality:	Polyclonal
Conjugate:	This PPP1R8 antibody is un-conjugated
Application:	Western Blotting (WB), Immunohistochemistry (IHC)

Product Details

Immunogen:	The immunogen is a synthetic peptide directed towards the N terminal region of human PPP1R8
Sequence:	THGTFLGHIR LEPHKPQQIP IDSTVSFGAS TRAYTLREKP QTLPSAVKGD
Predicted Reactivity:	Cow: 100%, Dog: 100%, Guinea Pig: 100%, Horse: 100%, Human: 100%, Mouse: 100%, Rabbit: 100%, Rat: 100%, Zebrafish: 93%
Characteristics:	This is a rabbit polyclonal antibody against PPP1R8. It was validated on Western Blot using a cell lysate as a positive control.
Purification:	Protein A purified

Target Details

Target:	PPP1R8
---------	--------

Target Details

Alternative Name:	PPP1R8 (PPP1R8 Products)
Background:	<p>This gene, through alternative splicing, encodes three different isoforms. Two of the protein isoforms encoded by this gene are specific inhibitors of type 1 serine/threonine protein phosphatases and can bind but not cleave RNA. The third protein isoform lacks the phosphatase inhibitory function but is a single-strand endoribonuclease comparable to RNase E of E. coli. This isoform requires magnesium for its function and cleaves specific sites in A+U-rich regions of RNA.</p> <p>Alias Symbols: ARD1, ARD-1, NIPP1, NIPP-1, PRO2047</p> <p>Protein Interaction Partner: APPBP2, UBC, FBX025, HMGA1, WDR77, CTNNBL1, PPIL1, PPP1CC, PPP1CA, NF2, APP, SF3A2, Cep72, PPP1CB, SUZ12, RBBP4, EZH2, EED, RBM48, SF3B1, SETDB1, MELK, HDAC2, C14orf1, STC2, CDC5L, CRMP1, PRKACA, GBP2, LYN, CSNK2A2, CSNK2A1, NME2,</p> <p>Protein Size: 351</p>
Molecular Weight:	39 kDa
Gene ID:	5511
NCBI Accession:	NM_014110 , NP_054829
UniProt:	Q12972

Application Details

Application Notes:	Optimal working dilutions should be determined experimentally by the investigator.
Comment:	Antigen size: 351 AA
Restrictions:	For Research Use only

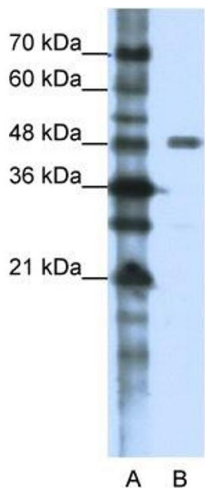
Handling

Format:	Liquid
Concentration:	Lot specific
Buffer:	Liquid. Purified antibody supplied in 1x PBS buffer with 0.09 % (w/v) sodium azide and 2 % sucrose.
Preservative:	Sodium azide
Precaution of Use:	This product contains Sodium azide: a POISONOUS AND HAZARDOUS SUBSTANCE which should be handled by trained staff only.

Handling

Handling Advice:	Avoid repeated freeze-thaw cycles.
Storage:	-20 °C
Storage Comment:	For short term use, store at 2-8°C up to 1 week. For long term storage, store at -20°C in small aliquots to prevent freeze-thaw cycles.

Images



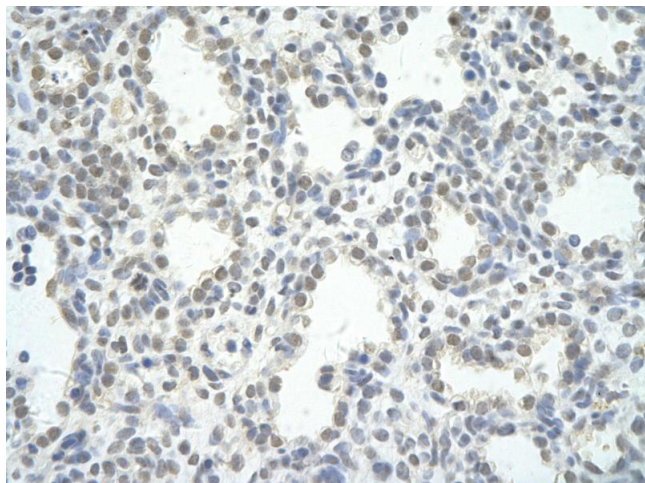
Western Blotting

Image 1. WB Suggested Anti-PPP1R8 Antibody Titration: 1.25ug/ml ELISA Titer: 1:312500 Positive Control: HepG2 cell lysate PPP1R8 is supported by BioGPS gene expression data to be expressed in HepG2



Western Blotting

Image 2. WB Suggested Anti-PPP1R8 Antibody Titration: 1.25 µg/mL ELISA Titer: 1:312500 Positive Control: HepG2 cell lysate PPP1R8 is supported by BioGPS gene expression data to be expressed in HepG2



Immunohistochemistry

Image 3. Rabbit Anti-PPP1R8 antibody Paraffin Embedded
Tissue: Human Lung cell Cellular Data: alveolar cell of renal
tubule Antibody Concentration: 4.0-8.0 ug/ml Magnification:
400X