

Datasheet for ABIN2779063
anti-LSM1 antibody (Middle Region)

3 Images

1 Publication

[Go to Product page](#)

Overview

Quantity:	100 µL
Target:	LSM1
Binding Specificity:	Middle Region
Reactivity:	Human, Mouse, Rat, Cow, Dog, Guinea Pig, Rabbit, Zebrafish (Danio rerio), Horse
Host:	Rabbit
Clonality:	Polyclonal
Conjugate:	This LSM1 antibody is un-conjugated
Application:	Western Blotting (WB), Immunohistochemistry (IHC)

Product Details

Immunogen:	The immunogen is a synthetic peptide directed towards the middle region of human LSM1
Sequence:	SDTPLQQVSI EEILEEQRVE QQTKLEAEKL KVQALKDRGL SIPRADTLDE
Predicted Reactivity:	Cow: 93%, Dog: 100%, Guinea Pig: 100%, Horse: 93%, Human: 100%, Mouse: 100%, Rabbit: 100%, Rat: 100%, Zebrafish: 79%
Characteristics:	This is a rabbit polyclonal antibody against LSM1. It was validated on Western Blot using a cell lysate as a positive control.
Purification:	Affinity Purified

Target Details

Target:	LSM1
---------	------

Target Details

Alternative Name:	LSM1 (LSM1 Products)
Background:	<p>Sm-like proteins were identified in a variety of organisms based on sequence homology with the Sm protein family (see SNRPD2, MIM 601061). Sm-like proteins contain the Sm sequence motif, which consists of 2 regions separated by a linker of variable length</p> <p>Alias Symbols: CASM, YJL124C</p> <p>Protein Interaction Partner: LSM3, P3H1, DDX17, UBE3A, LSM4, RRP1B, LSM6, MPDU1, GLUD1, PATL1, PRPF3, PRPF4, WASL, WHSC1, SNRPD3, SNRPD2, INPPL1, UBC, BCL6, NDUFAF3, VPS11, EXOSC6, UPF2, EXOSC8, TMEM214, LSM7, LSM5, LSM2, GRHPR, CLIC1, SMN2, PSMB5, UXT, PSMB8, PTPRC, HSP90AA1, NARS,</p> <p>Protein Size: 133</p>
Molecular Weight:	15 kDa
Gene ID:	27257
NCBI Accession:	NM_014462 , NP_055277
UniProt:	O15116

Application Details

Application Notes:	Optimal working dilutions should be determined experimentally by the investigator.
Comment:	Antigen size: 133 AA
Restrictions:	For Research Use only

Handling

Format:	Liquid
Concentration:	Lot specific
Buffer:	Liquid. Purified antibody supplied in 1x PBS buffer with 0.09 % (w/v) sodium azide and 2 % sucrose.
Preservative:	Sodium azide
Precaution of Use:	This product contains Sodium azide: a POISONOUS AND HAZARDOUS SUBSTANCE which should be handled by trained staff only.
Handling Advice:	Avoid repeated freeze-thaw cycles.
Storage:	-20 °C

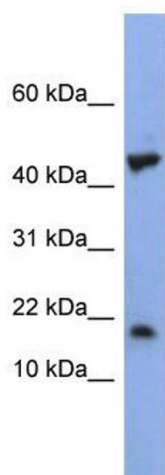
Handling

Storage Comment: For short term use, store at 2-8°C up to 1 week. For long term storage, store at -20°C in small aliquots to prevent freeze-thaw cycles.

Publications

Product cited in: Huang, Chen, Wu, Huang, He, Tang, Wang, Wang: "The zebrafish miR-462/miR-731 cluster is induced under hypoxic stress via hypoxia-inducible factor 1 α and functions in cellular adaptations." in: **FASEB journal : official publication of the Federation of American Societies for Experimental Biology**, Vol. 29, Issue 12, pp. 4901-13, (2015) ([PubMed](#)).

Images



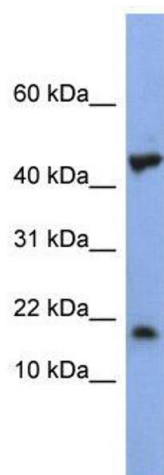
Western Blotting

Image 1. WB Suggested Anti-LSM1 Antibody Titration:

0.2-1 ug/ml

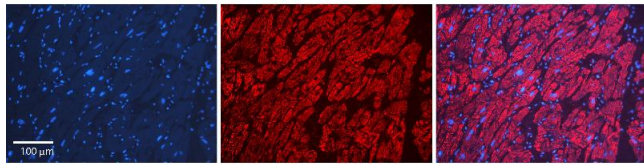
ELISA Titer: 1:312500

Positive Control: NCI-H226 cell lysate



Western Blotting

Image 2. WB Suggested Anti-LSM1 Antibody Titration: 0.2-1 ug/ml ELISA Titer: 1:312500 Positive Control: NCI-H226 cell lysate



Immunohistochemistry

Image 3. Rabbit Anti-LSM1 Antibody Formalin Fixed Paraffin Embedded Tissue: Human heart Tissue Observed Staining: Cytoplasmic Primary Antibody Concentration: N/A Other Working Concentrations: 1:600 Secondary Antibody: Donkey anti-Rabbit-Cy3 Secondary Antibody Concentration: 1:200 Magnification: 20X Exposure Time: 0.5 - 2.0 sec