



[Go to Product page](#)

Datasheet for ABIN2779067

anti-TMEM63A antibody (C-Term)

2 Images

Overview

Quantity:	100 µL
Target:	TMEM63A
Binding Specificity:	C-Term
Reactivity:	Human, Rabbit, Mouse, Rat, Cow, Horse
Host:	Rabbit
Clonality:	Polyclonal
Conjugate:	This TMEM63A antibody is un-conjugated
Application:	Western Blotting (WB)

Product Details

Sequence:	FLVLLLTILV CLAHTCFGCF KHLSPNLYKT EEPASDKGSE AEAHMPPPFT
Predicted Reactivity:	Cow: 86%, Horse: 93%, Human: 100%, Mouse: 93%, Rabbit: 79%, Rat: 82%
Characteristics:	This is a rabbit polyclonal antibody against TMEM63A. It was validated on Western Blot.
Purification:	Affinity Purified

Target Details

Target:	TMEM63A
Alternative Name:	TMEM63A (TMEM63A Products)
Background:	TMEM63A is a multi-pass membrane proteinPotential. It belongs to the SP075/TMEM63 family. The exact function of TMEM63A remains unknown.

Target Details

Alias Symbols: KIAA0489, KIAA0792

Protein Interaction Partner: UBC,

Protein Size: 807

Molecular Weight: 92 kDa

Gene ID: 9725

NCBI Accession: [NM_014698](#), [NP_055513](#)

UniProt: [O94886](#)

Application Details

Application Notes: Optimal working dilutions should be determined experimentally by the investigator.

Comment: Antigen size: 807 AA

Restrictions: For Research Use only

Handling

Format: Liquid

Concentration: Lot specific

Buffer: Liquid. Purified antibody supplied in 1x PBS buffer with 0.09 % (w/v) sodium azide and 2 % sucrose.

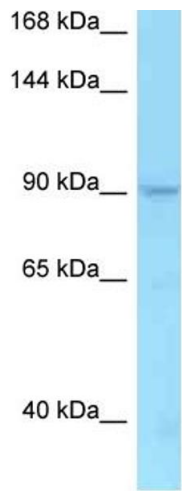
Preservative: Sodium azide

Precaution of Use: This product contains Sodium azide: a POISONOUS AND HAZARDOUS SUBSTANCE which should be handled by trained staff only.

Handling Advice: Avoid repeated freeze-thaw cycles.

Storage: -20 °C

Storage Comment: For short term use, store at 2-8°C up to 1 week. For long term storage, store at -20°C in small aliquots to prevent freeze-thaw cycles.

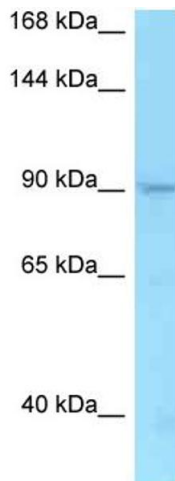


Rabbit Anti-TMEM63A Antibody
Catalog Number: ARP40785
Lot Number: QC9866
Lane: PANC1 Cell Lysate

Antibody Titration: 1.0µg/ml
Gel Concentration: 6-18%

Western Blotting

Image 1.



Western Blotting

Image 2. WB Suggested Anti-TMEM63A Antibody Titration: 1.0 ug/ml Positive Control: PANC1 Whole Cell There is BioGPS gene expression data showing that TMEM63A is expressed in PANC1