

Datasheet for ABIN2779077

**anti-FNBP1 antibody (N-Term)**[Go to Product page](#)**1** Image

## Overview

Quantity:	100 µL
Target:	FNBP1
Binding Specificity:	N-Term
Reactivity:	Human, Rat, Mouse, Cow, Dog, Horse, Zebrafish (Danio rerio), Guinea Pig, Rabbit
Host:	Rabbit
Clonality:	Polyclonal
Conjugate:	This FNBP1 antibody is un-conjugated
Application:	Western Blotting (WB)

## Product Details

Sequence:	ENMTSQITVD LMRYVQELKQ ERKSNFHDGR KAQQHIETCW KQLESSKRRF
Predicted Reactivity:	Cow: 93%, Dog: 93%, Guinea Pig: 93%, Horse: 86%, Human: 100%, Mouse: 100%, Rabbit: 100%, Rat: 100%, Zebrafish: 79%
Characteristics:	This is a rabbit polyclonal antibody against Fnbp1. It was validated on Western Blot.
Purification:	Affinity Purified

## Target Details

Target:	FNBP1
Alternative Name:	Fnbp1 ( <a href="#">FNBP1 Products</a> )
Background:	The function of this protein remains unknown.

## Target Details

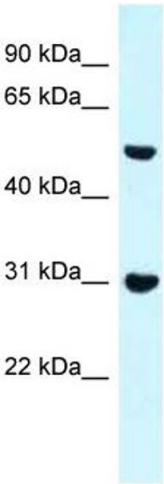
	Alias Symbols: 1110057E06Rik, 2210010H06Rik, FBP1, Fbp17 Protein Interaction Partner: CALM1, Pde6g, Protein Size: 522
Molecular Weight:	57 kDa
Gene ID:	14269
NCBI Accession:	<a href="#">NM_001177650</a> , <a href="#">NP_001171121</a>
UniProt:	<a href="#">Q80TY0</a>

## Application Details

Application Notes:	Optimal working dilutions should be determined experimentally by the investigator.
Comment:	Antigen size: 522 AA
Restrictions:	For Research Use only

## Handling

Format:	Liquid
Concentration:	Lot specific
Buffer:	Liquid. Purified antibody supplied in 1x PBS buffer with 0.09 % (w/v) sodium azide and 2 % sucrose.
Preservative:	Sodium azide
Precaution of Use:	This product contains Sodium azide: a POISONOUS AND HAZARDOUS SUBSTANCE which should be handled by trained staff only.
Handling Advice:	Avoid repeated freeze-thaw cycles.
Storage:	-20 °C
Storage Comment:	For short term use, store at 2-8°C up to 1 week. For long term storage, store at -20°C in small aliquots to prevent freeze-thaw cycles.



Western Blotting

**Image 1.** WB Suggested Anti-Fnbp1 Antibody Titration: 1.0 ug/ml Positive Control: Mouse Pancreas