



Datasheet for ABIN2779081
anti-CSTF2T antibody (C-Term)



[Go to Product page](#)

2 Images

Overview

Quantity:	100 µL
Target:	CSTF2T
Binding Specificity:	C-Term
Reactivity:	Human, Mouse, Rat, Horse, Guinea Pig, Dog, Rabbit, Cow
Host:	Rabbit
Clonality:	Polyclonal
Conjugate:	This CSTF2T antibody is un-conjugated
Application:	Western Blotting (WB), Immunofluorescence (IF)

Product Details

Immunogen:	The immunogen is a synthetic peptide directed towards the C terminal region of human CSTF2T
Sequence:	MRGPVPSSRG PMTGGIQGPG PINIGAGGPP QGPRQVPGIS GVGNPGAGMQ
Predicted Reactivity:	Cow: 86%, Dog: 86%, Guinea Pig: 86%, Horse: 86%, Human: 100%, Mouse: 85%, Rabbit: 91%, Rat: 85%
Characteristics:	This is a rabbit polyclonal antibody against CSTF2T. It was validated on Western Blot using a cell lysate as a positive control.
Purification:	Affinity Purified

Target Details

Target:	CSTF2T
---------	--------

Target Details

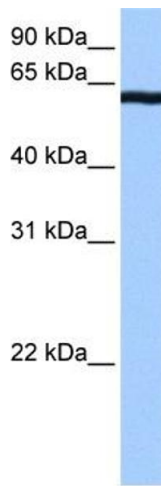
Alternative Name:	CSTF2T (CSTF2T Products)
Background:	<p>CSTF2T may play a significant role in AAUAAA-independent mRNA polyadenylation in germ cells. It is directly involved in the binding to pre-mRNAs.</p> <p>Alias Symbols: CstF-64T, DKFZp434C1013, KIAA0689</p> <p>Protein Interaction Partner: UBQLN1, HGS, UBC, CSTF3, UBQLN4, CPSF1, CPSF2, CPSF4, RRAGA,</p> <p>Protein Size: 616</p>
Molecular Weight:	64 kDa
Gene ID:	23283
NCBI Accession:	NM_015235 , NP_056050
UniProt:	Q9H0L4

Application Details

Application Notes:	Optimal working dilutions should be determined experimentally by the investigator.
Comment:	Antigen size: 616 AA
Restrictions:	For Research Use only

Handling

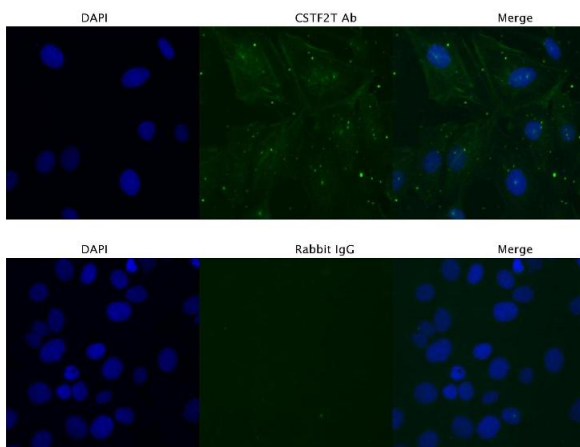
Format:	Liquid
Concentration:	Lot specific
Buffer:	Liquid. Purified antibody supplied in 1x PBS buffer with 0.09 % (w/v) sodium azide and 2 % sucrose.
Preservative:	Sodium azide
Precaution of Use:	This product contains Sodium azide: a POISONOUS AND HAZARDOUS SUBSTANCE which should be handled by trained staff only.
Handling Advice:	Avoid repeated freeze-thaw cycles.
Storage:	-20 °C
Storage Comment:	For short term use, store at 2-8°C up to 1 week. For long term storage, store at -20°C in small aliquots to prevent freeze-thaw cycles.



Western Blotting

Image 1. WB Suggested Anti-CSTF2T Antibody Titration: 0.2-1 ug/ml Positive Control: Human brain

CSTF2T in SK-OV-3 Cells



Immunofluorescence

Image 2. Sample Type : SKOV3 Primary Antibody Dilution: 4 ug/ml Secondary Antibody : Anti-rabbit Alexa 546 Secondary Antibody Dilution: 2 ug/ml Gene Name : CSTF2T