

Datasheet for ABIN2779100
anti-CPSF3 antibody (C-Term)[Go to Product page](#)

2 Images

Overview

Quantity:	100 µL
Target:	CPSF3
Binding Specificity:	C-Term
Reactivity:	Human, Mouse, Rat, Dog, Rabbit, Cow, Horse, Guinea Pig
Host:	Rabbit
Clonality:	Polyclonal
Conjugate:	This CPSF3 antibody is un-conjugated
Application:	Western Blotting (WB), Immunohistochemistry (IHC)

Product Details

Immunogen:	The immunogen is a synthetic peptide directed towards the C terminal region of human CPSF3
Sequence:	DDSLSVTVTD GKTANLNLET RTVECEEGSE DDESLREMVE LAAQRLYEAL
Predicted Reactivity:	Cow: 93%, Dog: 93%, Guinea Pig: 93%, Horse: 93%, Human: 100%, Mouse: 93%, Rabbit: 86%, Rat: 93%
Characteristics:	This is a rabbit polyclonal antibody against CPSF3. It was validated on Western Blot and immunohistochemistry.
Purification:	Protein A purified

Target Details

Target:	CPSF3
---------	-------

Target Details

Alternative Name:	CPSF3 (CPSF3 Products)
Background:	<p>CPSF3 belongs to the RNA-metabolizing metallo-beta-lactamase-like family, CPSF3 subfamily. It is component of the cleavage and polyadenylation specificity factor (CPSF) complex that play a key role in pre-mRNA 3'-end formation, recognizing the AAUAAA signal sequence and interacting with poly(A) polymerase and other factors to bring about cleavage and poly(A) addition.</p> <p>Alias Symbols: CPSF, YSH1, CPSF73, CPSF-73</p> <p>Protein Interaction Partner: UBC, SUMO1, WWOX, AICDA, POLR2A, NPM1, TUT1, SYMPK, CSTF2, CPSF2, PAXIP1, MDC1, BARD1, FIP1L1, POLR1E, WDR33, CPSF1, UBD, SIRT7, SMARCAD1, RRAGA, TBP, CDC73, CLP1, PAPOLA, YWHAG,</p> <p>Protein Size: 684</p>
Molecular Weight:	75 kDa
Gene ID:	51692
NCBI Accession:	NM_016207 , NP_057291
UniProt:	Q9UKF6

Application Details

Application Notes:	Optimal working dilutions should be determined experimentally by the investigator.
Comment:	Antigen size: 684 AA
Restrictions:	For Research Use only

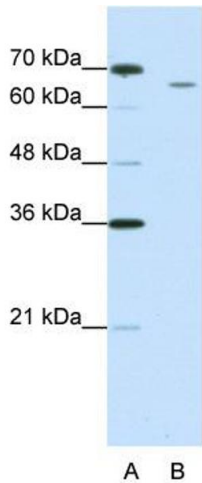
Handling

Format:	Liquid
Concentration:	Lot specific
Buffer:	Liquid. Purified antibody supplied in 1x PBS buffer with 0.09 % (w/v) sodium azide and 2 % sucrose.
Preservative:	Sodium azide
Precaution of Use:	This product contains Sodium azide: a POISONOUS AND HAZARDOUS SUBSTANCE which should be handled by trained staff only.
Handling Advice:	Avoid repeated freeze-thaw cycles.

Handling

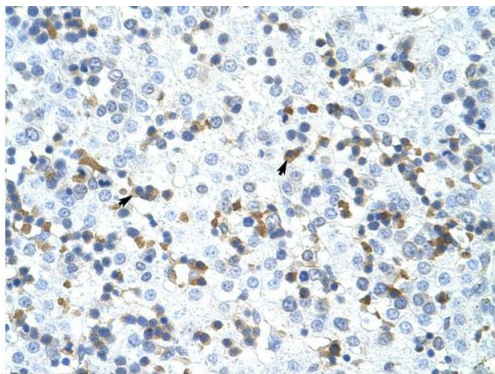
Storage:	-20 °C
Storage Comment:	For short term use, store at 2-8°C up to 1 week. For long term storage, store at -20°C in small aliquots to prevent freeze-thaw cycles.

Images



Western Blotting

Image 1. WB Suggested Anti-CPSF3 Antibody Titration: 1.25ug/ml ELISA Titer: 1:62500 Positive Control: Jurkat cell lysate



Rabbit Anti-CPSF3 Antibody
Catalog Number: ARP40841
Lot Number: QC9991
Paraffin Embedded Tissue: Human Liver
Cells with Positive label: Liver cells (Indicated with Arrows)
Antibody Concentration: 4.0-8.0 µg/ml
Magnification: 400X

Immunohistochemistry

Image 2. Rabbit Anti-CPSF3 Antibody Paraffin Embedded Tissue: Human Liver Cellular Data: Liver cells Antibody Concentration: 4.0-8.0 ug/ml Magnification: 400X