



[Go to Product page](#)

Datasheet for ABIN2779103
anti-EVL antibody (Middle Region)

1 Image

Overview

Quantity:	100 µL
Target:	EVL
Binding Specificity:	Middle Region
Reactivity:	Human, Mouse, Rat, Horse, Cow, Dog, Guinea Pig, Rabbit
Host:	Rabbit
Clonality:	Polyclonal
Conjugate:	This EVL antibody is un-conjugated
Application:	Western Blotting (WB)

Product Details

Immunogen:	The immunogen is a synthetic peptide directed towards the middle region of Mouse Evl
Sequence:	FSNAMLFALN IMNSQEGGPS TQRQVQNGPS PEEMDIQRRQ VMEQQHRQES
Predicted Reactivity:	Cow: 100%, Dog: 93%, Guinea Pig: 93%, Horse: 93%, Human: 100%, Mouse: 93%, Rabbit: 93%, Rat: 93%
Characteristics:	This is a rabbit polyclonal antibody against EVL. It was validated on Western Blot.
Purification:	Affinity Purified

Target Details

Target:	EVL
Alternative Name:	Evl (EVL Products)

Target Details

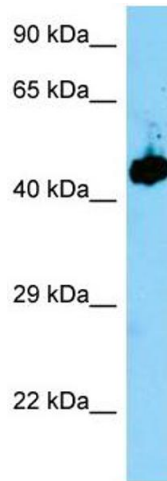
Background:	The function of this protein remains unknown. Alias Symbols: AI528774 Protein Interaction Partner: Ywhaz, Src, Pfn2, Prkaca, Apbb1, Abl1, Lyn, Protein Size: 393
Molecular Weight:	42 kDa
Gene ID:	14026
NCBI Accession:	NM_007965 , NP_031991
UniProt:	Q6PB99

Application Details

Application Notes:	Optimal working dilutions should be determined experimentally by the investigator.
Comment:	Antigen size: 393 AA
Restrictions:	For Research Use only

Handling

Format:	Liquid
Concentration:	Lot specific
Buffer:	Liquid. Purified antibody supplied in 1x PBS buffer with 0.09 % (w/v) sodium azide and 2 % sucrose.
Preservative:	Sodium azide
Precaution of Use:	This product contains Sodium azide: a POISONOUS AND HAZARDOUS SUBSTANCE which should be handled by trained staff only.
Handling Advice:	Avoid repeated freeze-thaw cycles.
Storage:	-20 °C
Storage Comment:	For short term use, store at 2-8°C up to 1 week. For long term storage, store at -20°C in small aliquots to prevent freeze-thaw cycles.



Western Blotting

Image 1. WB Suggested Anti-Evl Antibody Titration: 1.0 ug/ml Positive Control: Mouse Stomach