

Datasheet for ABIN2779111
anti-RBM38 antibody (N-Term)

3 Images

[Go to Product page](#)

Overview

Quantity:	100 µL
Target:	RBM38
Binding Specificity:	N-Term
Reactivity:	Human, Mouse, Rat, Dog, Cow, Guinea Pig, Zebrafish (Danio rerio)
Host:	Rabbit
Clonality:	Polyclonal
Conjugate:	This RBM38 antibody is un-conjugated
Application:	Immunohistochemistry (IHC), Western Blotting (WB)

Product Details

Immunogen:	The immunogen is a synthetic peptide directed towards the N terminal region of human RBM38
Sequence:	LPYHTTDASL RKYFEGFGDI EEAHVITDRQ TGKSRGYGFV TMADRAAAER
Predicted Reactivity:	Cow: 100%, Dog: 100%, Guinea Pig: 100%, Human: 100%, Mouse: 100%, Rat: 79%, Zebrafish: 100%
Characteristics:	This is a rabbit polyclonal antibody against RBM38. It was validated on Western Blot and immunohistochemistry.
Purification:	Affinity Purified

Target Details

Target:	RBM38
---------	-------

Target Details

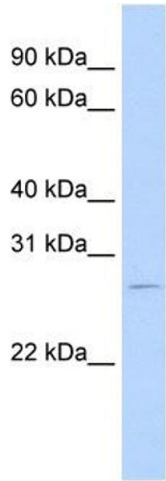
Alternative Name:	RBM38 (RBM38 Products)
Background:	<p>RBM38 is a probable RNA-binding protein.</p> <p>Alias Symbols: RNPC1, SEB4B, SEB4D, HSRNASEB, dJ800J21.2</p> <p>Protein Interaction Partner: MDM2, RCHY1, UBC,</p> <p>Protein Size: 239</p>
Molecular Weight:	26 kDa
Gene ID:	55544
NCBI Accession:	NM_017495 , NP_059965
UniProt:	Q9H0Z9
Pathways:	Regulation of Muscle Cell Differentiation , Skeletal Muscle Fiber Development

Application Details

Application Notes:	Optimal working dilutions should be determined experimentally by the investigator.
Comment:	Antigen size: 239 AA
Restrictions:	For Research Use only

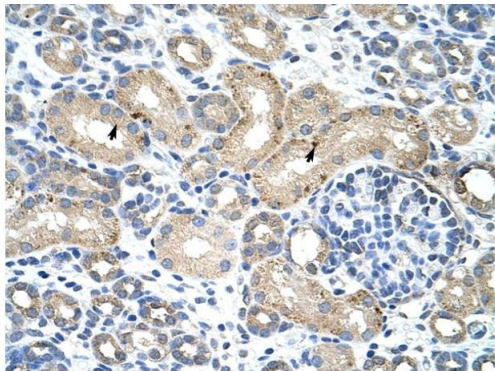
Handling

Format:	Liquid
Concentration:	Lot specific
Buffer:	Liquid. Purified antibody supplied in 1x PBS buffer with 0.09 % (w/v) sodium azide and 2 % sucrose.
Preservative:	Sodium azide
Precaution of Use:	This product contains Sodium azide: a POISONOUS AND HAZARDOUS SUBSTANCE which should be handled by trained staff only.
Handling Advice:	Avoid repeated freeze-thaw cycles.
Storage:	-20 °C
Storage Comment:	For short term use, store at 2-8°C up to 1 week. For long term storage, store at -20°C in small aliquots to prevent freeze-thaw cycles.



Western Blotting

Image 1. WB Suggested Anti-RBM38 Antibody Titration: 0.2-1 ug/ml Positive Control: RPMI 8226 cell lysate RBM38 is supported by BioGPS gene expression data to be expressed in RPMI 8226



Rabbit Anti-RBM38 Antibody
Catalog Number: ARP40862
Lot Number: QC10142
Paraffin Embedded Tissue: Human Kidney
Cells with Positive label: Epithelial cells of renal tubule (Indicated with Arrows)
Antibody Concentration: 4.0-8.0 µg/ml
Magnification: 400X

Immunohistochemistry

Image 2. Rabbit Anti-RBM38 Antibody Paraffin Embedded Tissue: Human Kidney Cellular Data: Epithelial cells of renal tubule Antibody Concentration: 4.0-8.0 ug/ml Magnification: 400X

RBM38



Western Blotting

Image 3. Host: Rabbit Target Name: RBM38 Sample Tissue: Human A549 Antibody Dilution: 1.0ug/ml