

Datasheet for ABIN2779112  
**anti-RBM38 antibody (Middle Region)**[Go to Product page](#)

1 Image

1 Publication

## Overview

Quantity:	100 µL
Target:	RBM38
Binding Specificity:	Middle Region
Reactivity:	Human, Mouse, Rat, Dog, Cow, Guinea Pig
Host:	Rabbit
Clonality:	Polyclonal
Conjugate:	This RBM38 antibody is un-conjugated
Application:	Western Blotting (WB)

## Product Details

Immunogen:	The immunogen is a synthetic peptide directed towards the middle region of human RBM38
Sequence:	QYPYAASPAT AASFVGYSYP AAVPQALSAA APAGTTFVQY QAPQLQPDPM
Predicted Reactivity:	Cow: 86%, Dog: 86%, Guinea Pig: 93%, Human: 100%, Mouse: 100%, Rat: 100%
Characteristics:	This is a rabbit polyclonal antibody against RBM38. It was validated on Western Blot using a cell lysate as a positive control.
Purification:	Affinity Purified

## Target Details

Target:	RBM38
Alternative Name:	RBM38 ( <a href="#">RBM38 Products</a> )

## Target Details

Background:	RBM38 is a probable RNA-binding protein. Alias Symbols: HSRNASEB, RNPC1, SEB4B, SEB4D, dJ800J21.2 Protein Interaction Partner: MDM2, RCHY1, UBC, Protein Size: 239
Molecular Weight:	25 kDa
Gene ID:	55544
NCBI Accession:	<a href="#">NM_017495</a> , <a href="#">NP_059965</a>
UniProt:	<a href="#">Q9H0Z9</a>
Pathways:	<a href="#">Regulation of Muscle Cell Differentiation</a> , <a href="#">Skeletal Muscle Fiber Development</a>

## Application Details

Application Notes:	Optimal working dilutions should be determined experimentally by the investigator.
Comment:	Antigen size: 239 AA
Restrictions:	For Research Use only

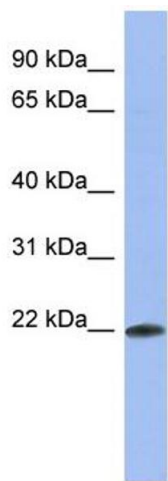
## Handling

Format:	Liquid
Concentration:	Lot specific
Buffer:	Liquid. Purified antibody supplied in 1x PBS buffer with 0.09 % (w/v) sodium azide and 2 % sucrose.
Preservative:	Sodium azide
Precaution of Use:	This product contains Sodium azide: a POISONOUS AND HAZARDOUS SUBSTANCE which should be handled by trained staff only.
Handling Advice:	Avoid repeated freeze-thaw cycles.
Storage:	-20 °C
Storage Comment:	For short term use, store at 2-8°C up to 1 week. For long term storage, store at -20°C in small aliquots to prevent freeze-thaw cycles.

## Publications

Product cited in:	Lazrek, Goffard, Schanen, Karquel, Bocket, Lion, Devaux, Hedouin, Gosset, Hober: "Detection of
-------------------	--

hepatitis C virus antibodies and RNA among medicolegal autopsy cases in Northern France." in:  
**Diagnostic microbiology and infectious disease**, Vol. 55, Issue 1, pp. 55-8, (2006) ([PubMed](#)).



**Western Blotting**

**Image 1.** WB Suggested Anti-RBM38 Antibody Titration: 0.2-1 ug/ml ELISA Titer: 1:62500 Positive Control: HT1080 cell lysate