

Datasheet for ABIN2779113

anti-FOXRED1 antibody (N-Term)**1** Image**1** Publication[Go to Product page](#)

Overview

Quantity:	100 µL
Target:	FOXRED1
Binding Specificity:	N-Term
Reactivity:	Human, Mouse, Rat, Horse, Cow, Dog, Guinea Pig, Rabbit
Host:	Rabbit
Clonality:	Polyclonal
Conjugate:	This FOXRED1 antibody is un-conjugated
Application:	Western Blotting (WB)

Product Details

Immunogen:	The immunogen is a synthetic peptide directed towards the N terminal region of human FOXRED1
Sequence:	SEIKKKIKSI LPGRSCDLLQ DTSHLPPEHS DVVIVGGGVL GLSVAYWLKK
Predicted Reactivity:	Cow: 92%, Dog: 92%, Guinea Pig: 92%, Horse: 100%, Human: 100%, Mouse: 85%, Rabbit: 92%, Rat: 92%
Characteristics:	This is a rabbit polyclonal antibody against FOXRED1. It was validated on Western Blot using a cell lysate as a positive control.
Purification:	Affinity Purified

Target Details

Target:	FOXRED1
---------	---------

Target Details

Alternative Name:	FOXRED1 (FOXRED1 Products)
Background:	The function of this protein remains unknown. Alias Symbols: FP634, H17 Protein Interaction Partner: UBC, EXOSC10, Protein Size: 486
Molecular Weight:	54 kDa
Gene ID:	55572
NCBI Accession:	NM_017547 , NP_060017
UniProt:	Q96CU9

Application Details

Application Notes:	Optimal working dilutions should be determined experimentally by the investigator.
Comment:	Antigen size: 486 AA
Restrictions:	For Research Use only

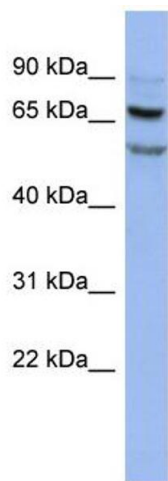
Handling

Format:	Liquid
Concentration:	Lot specific
Buffer:	Liquid. Purified antibody supplied in 1x PBS buffer with 0.09 % (w/v) sodium azide and 2 % sucrose.
Preservative:	Sodium azide
Precaution of Use:	This product contains Sodium azide: a POISONOUS AND HAZARDOUS SUBSTANCE which should be handled by trained staff only.
Handling Advice:	Avoid repeated freeze-thaw cycles.
Storage:	-20 °C
Storage Comment:	For short term use, store at 2-8°C up to 1 week. For long term storage, store at -20°C in small aliquots to prevent freeze-thaw cycles.

Publications

Product cited in:	Yomo, Hongo, Kuroyanagi, Kobayashi: "Parkinsonism and midbrain dysfunction after shunt
-------------------	--

placement for obstructive hydrocephalus." in: **Journal of clinical neuroscience : official journal of the Neurosurgical Society of Australasia**, Vol. 13, Issue 3, pp. 373-8, (2006) ([PubMed](#)).



Western Blotting

Image 1. WB Suggested Anti-FOXRED1 Antibody Titration: 0.2-1 ug/ml ELISA Titer: 1:1562500 Positive Control: HT1080 cell lysate