

Datasheet for ABIN2779117
anti-NXF3 antibody (C-Term)

3 Images

[Go to Product page](#)

Overview

Quantity:	100 µL
Target:	NXF3
Binding Specificity:	C-Term
Reactivity:	Human, Pig, Rabbit, Rat, Cow, Dog, Guinea Pig, Horse
Host:	Rabbit
Clonality:	Polyclonal
Conjugate:	This NXF3 antibody is un-conjugated
Application:	Western Blotting (WB), Immunohistochemistry (IHC)

Product Details

Immunogen:	The immunogen is a synthetic peptide directed towards the C terminal region of human NXF3
Sequence:	SSFLVDMWYQ TEWMLCFSVN GVFKEVEGQS QGSVLAFTRT FIATPGSSSS
Predicted Reactivity:	Cow: 92%, Dog: 92%, Guinea Pig: 77%, Horse: 79%, Human: 100%, Pig: 92%, Rabbit: 92%, Rat: 77%
Characteristics:	This is a rabbit polyclonal antibody against NXF3. It was validated on Western Blot and immunohistochemistry.
Purification:	Protein A purified

Target Details

Target:	NXF3
---------	------

Target Details

Alternative Name: NXF3 ([NXF3 Products](#))

Background: NXF3 is one member of a family of nuclear RNA export factors. Common domain features of this family are a noncanonical RNP-type RNA-binding domain (RBD), 4 leucine-rich repeats (LRRs), a nuclear transport factor 2 (NTF2)-like domain that allows heterodimerization with NTF2-related export protein-1 (NXT1), and a ubiquitin-associated domain that mediates interactions with nucleoporins. The LRRs and NTF2-like domains are required for export activity. NXF3 has shortened LRR and ubiquitin-associated domains and its RDB is unable to bind RNA. It is located in the nucleoplasm but is not associated with either the nuclear envelope or the nucleolus. This gene is one member of a family of nuclear RNA export factor genes. Common domain features of this family are a noncanonical RNP-type RNA-binding domain (RBD), 4 leucine-rich repeats (LRRs), a nuclear transport factor 2 (NTF2)-like domain that allows heterodimerization with NTF2-related export protein-1 (NXT1), and a ubiquitin-associated domain that mediates interactions with nucleoporins. The LRRs and NTF2-like domains are required for export activity. Alternative splicing seems to be a common mechanism in this gene family. The encoded protein of this gene has shortened LRR and ubiquitin-associated domains and its RDB is unable to bind RNA. It is located in the nucleoplasm but is not associated with either the nuclear envelope or the nucleolus.

Protein Interaction Partner: NXT2, NXT1, SKIL, NXF1, HHV8GK18_gp81, HNRNPUL1, XPO1, NUP214,

Protein Size: 531

Molecular Weight: 58 kDa

Gene ID: 56000

NCBI Accession: [NM_022052](#), [NP_071335](#)

UniProt: [Q9H4D5](#)

Application Details

Application Notes: Optimal working dilutions should be determined experimentally by the investigator.

Comment: Antigen size: 531 AA

Restrictions: For Research Use only

Handling

Format: Liquid

Handling

Concentration:	Lot specific
Buffer:	Liquid. Purified antibody supplied in 1x PBS buffer with 0.09 % (w/v) sodium azide and 2 % sucrose.
Preservative:	Sodium azide
Precaution of Use:	This product contains Sodium azide: a POISONOUS AND HAZARDOUS SUBSTANCE which should be handled by trained staff only.
Handling Advice:	Avoid repeated freeze-thaw cycles.
Storage:	-20 °C
Storage Comment:	For short term use, store at 2-8°C up to 1 week. For long term storage, store at -20°C in small aliquots to prevent freeze-thaw cycles.

Images



Western Blotting

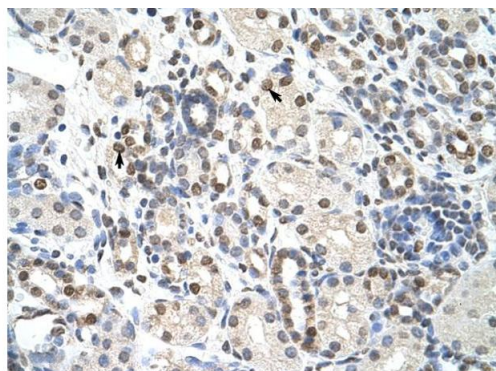
Image 1. WB Suggested Anti-NXF3 Antibody Titration: 1.25ug/ml Positive Control: RPMI 8226 cell lysate NXF3 is supported by BioGPS gene expression data to be expressed in RPMI 8226



Rabbit Anti-NXF3 Antibody
Catalog Number: ARP40875
Lot Number: QC10342
Paraffin Embedded Tissue: Human Heart
Cells with Positive label: Myocardial cells (Indicated with Arrows)
Antibody Concentration: 4.0-8.0 µg/ml
Magnification: 400X

Immunohistochemistry

Image 2. Rabbit Anti-NXF3 Antibody Paraffin Embedded Tissue: Human Heart Cellular Data: Myocardial cells Antibody Concentration: 4.0-8.0 ug/ml Magnification: 400X



Rabbit Anti-NXF3 Antibody
Catalog Number: ARP40875
Lot Number: QC10342
Paraffin Embedded Tissue: Human Kidney
Cells with Positive label: Epithelial cells of renal tubule (Indicated with Arrows)
Antibody Concentration: 4.0-8.0 µg/ml
Magnification: 400X

Immunohistochemistry

Image 3. Rabbit Anti-NXF3 Antibody Paraffin Embedded
Tissue: Human Kidney Cellular Data: Epithelial cells of renal
tubule Antibody Concentration: 4.0-8.0 ug/ml Magnification:
400X