



[Go to Product page](#)

Datasheet for ABIN2779122

anti-C19orf24 antibody (N-Term)

1 Image

Overview

Quantity:	100 µL
Target:	C19orf24
Binding Specificity:	N-Term
Reactivity:	Human
Host:	Rabbit
Clonality:	Polyclonal
Conjugate:	This C19orf24 antibody is un-conjugated
Application:	Western Blotting (WB)

Product Details

Immunogen:	The immunogen is a synthetic peptide directed towards the N terminal region of human C19orf24
Sequence:	MREGQEMGPT PVPSNPLLHR SFPCWPRGWS HPVPTRELLL EPAQPADLLP
Predicted Reactivity:	Human: 100%
Characteristics:	This is a rabbit polyclonal antibody against C19orf24. It was validated on Western Blot using a cell lysate as a positive control.
Purification:	Affinity Purified

Target Details

Target:	C19orf24
---------	----------

Target Details

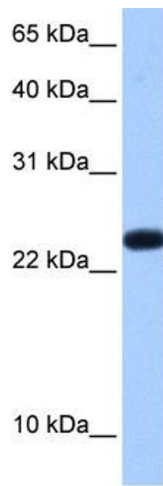
Alternative Name:	C19orf24 (C19orf24 Products)
Background:	<p>C19orf24 is a novel human non-classical secreted protein which is encoded by the hypothetical gene C19orf24 (chromosome 19 open reading frame 24). The exact function of C19orf24 remains unknown.</p> <p>Alias Symbols: FLJ20640</p> <p>Protein Size: 132</p>
Molecular Weight:	14 kDa
Gene ID:	55009
NCBI Accession:	NM_017914 , NP_060384
UniProt:	Q9BVV8

Application Details

Application Notes:	Optimal working dilutions should be determined experimentally by the investigator.
Comment:	Antigen size: 132 AA
Restrictions:	For Research Use only

Handling

Format:	Liquid
Concentration:	Lot specific
Buffer:	Liquid. Purified antibody supplied in 1x PBS buffer with 0.09 % (w/v) sodium azide and 2 % sucrose.
Preservative:	Sodium azide
Precaution of Use:	This product contains Sodium azide: a POISONOUS AND HAZARDOUS SUBSTANCE which should be handled by trained staff only.
Handling Advice:	Avoid repeated freeze-thaw cycles.
Storage:	-20 °C
Storage Comment:	For short term use, store at 2-8°C up to 1 week. For long term storage, store at -20°C in small aliquots to prevent freeze-thaw cycles.



Western Blotting

Image 1. WB Suggested Anti-C19orf24 Antibody Titration:
0.2-1 ug/ml Positive Control: Human Placenta