

Datasheet for ABIN2779125
anti-RBM22 antibody (C-Term)[Go to Product page](#)

3 Images

Overview

Quantity:	100 µL
Target:	RBM22
Binding Specificity:	C-Term
Reactivity:	Human, Mouse, Rat, Dog, Rabbit, Cow, Horse, Guinea Pig
Host:	Rabbit
Clonality:	Polyclonal
Conjugate:	This RBM22 antibody is un-conjugated
Application:	Western Blotting (WB), Immunohistochemistry (IHC)

Product Details

Immunogen:	The immunogen is a synthetic peptide directed towards the C terminal region of human RBM22
Sequence:	KWGRSQAARG KEKEKDGTDD SGIKLEPVPD LPGALPPPPA AEEEASANYF
Predicted Reactivity:	Cow: 100%, Dog: 100%, Guinea Pig: 100%, Horse: 93%, Human: 100%, Mouse: 100%, Rabbit: 100%, Rat: 100%
Characteristics:	This is a rabbit polyclonal antibody against RBM22. It was validated on Western Blot and immunohistochemistry.
Purification:	Affinity Purified

Target Details

Target:	RBM22
---------	-------

Target Details

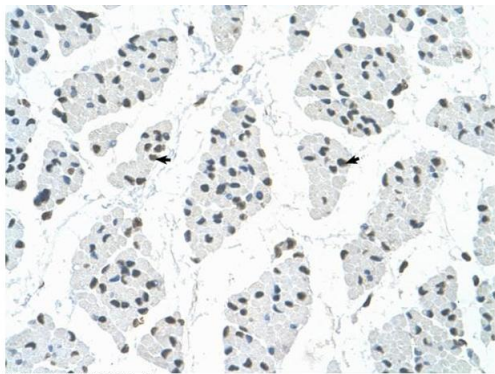
Alternative Name:	RBM22 (RBM22 Products)
Background:	<p>RBM22 may be involved in pre-mRNA splicing.</p> <p>Alias Symbols: FLJ10290, Cwc2, ZC3H16, fSAP47</p> <p>Protein Interaction Partner: CEP55, UBC, SUZ12, HDAC11, RBM4, RBFOX2, HNRNPUL1, AQR, EIF4A3, MAGOH, BARD1, CUL3, PRNP, RNU6-1, RNU6-6P, RNU6-50P,</p> <p>Protein Size: 420</p>
Molecular Weight:	46 kDa
Gene ID:	55696
NCBI Accession:	NM_018047 , NP_060517
UniProt:	Q9NW64
Pathways:	Protein targeting to Nucleus

Application Details

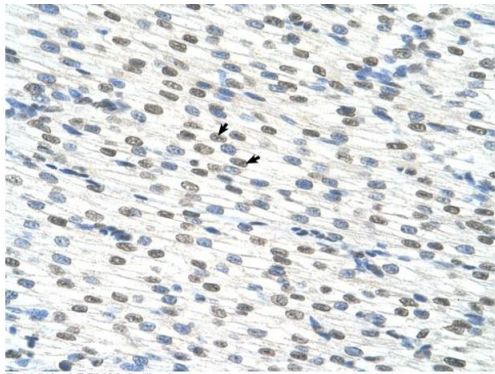
Application Notes:	Optimal working dilutions should be determined experimentally by the investigator.
Comment:	Antigen size: 420 AA
Restrictions:	For Research Use only

Handling

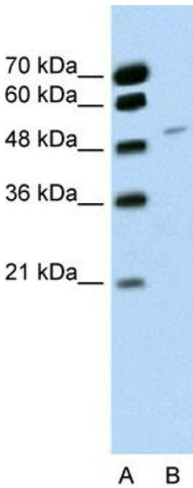
Format:	Liquid
Concentration:	Lot specific
Buffer:	Liquid. Purified antibody supplied in 1x PBS buffer with 0.09 % (w/v) sodium azide and 2 % sucrose.
Preservative:	Sodium azide
Precaution of Use:	This product contains Sodium azide: a POISONOUS AND HAZARDOUS SUBSTANCE which should be handled by trained staff only.
Handling Advice:	Avoid repeated freeze-thaw cycles.
Storage:	-20 °C
Storage Comment:	For short term use, store at 2-8°C up to 1 week. For long term storage, store at -20°C in small aliquots to prevent freeze-thaw cycles.



Rabbit Anti-RBM22 Antibody
Catalog Number: ARP40889
Lot Number: QC10383
Paraffin Embedded Tissue: Human Muscle
Cells with Positive label: Skeletal muscle cells (Indicated with Arrows)
Antibody Concentration: 4.0-8.0 µg/ml
Magnification: 400X



Rabbit Anti-RBM22 Antibody
Catalog Number: ARP40889
Lot Number: QC10383
Paraffin Embedded Tissue: Human Heart
Cells with Positive label: Myocardial cells (Indicated with Arrows)
Antibody Concentration: 4.0-8.0 µg/ml
Magnification: 400X



Immunohistochemistry

Image 1. Rabbit Anti-RBM22 Antibody Paraffin Embedded
Tissue: Human Muscle Cellular Data: Skeletal muscle cells
Antibody Concentration: 4.0-8.0 ug/ml Magnification: 400X

Immunohistochemistry

Image 2. Rabbit Anti-RBM22 Antibody Paraffin Embedded
Tissue: Human Heart Cellular Data: Myocardial cells
Antibody Concentration: 4.0-8.0 ug/ml Magnification: 400X

Western Blotting

Image 3. WB Suggested Anti-RBM22 Antibody Titration: 0.2-
1 ug/ml Positive Control: Jurkat cell lysate