

Datasheet for ABIN2779129
anti-SRBD1 antibody (N-Term)

3 Images

[Go to Product page](#)

Overview

Quantity:	100 µL
Target:	SRBD1
Binding Specificity:	N-Term
Reactivity:	Human, Mouse, Rat, Rabbit, Horse, Dog, Cow, Pig, Saccharomyces cerevisiae, Zebrafish (Danio rerio)
Host:	Rabbit
Clonality:	Polyclonal
Conjugate:	This SRBD1 antibody is un-conjugated
Application:	Western Blotting (WB), Immunohistochemistry (IHC)

Product Details

Immunogen:	The immunogen is a synthetic peptide directed towards the N terminal region of human SRBD1
Sequence:	MSSLPRRAKV QVQDVVLKDE FSSFSELSSA SEEDDKEDSA WEPQKKVPRS
Predicted Reactivity:	Cow: 93%, Dog: 100%, Horse: 100%, Human: 100%, Mouse: 86%, Pig: 93%, Rabbit: 100%, Rat: 100%, Yeast: 79%, Zebrafish: 80%
Characteristics:	This is a rabbit polyclonal antibody against SRBD1. It was validated on Western Blot using a cell lysate as a positive control.
Purification:	Affinity Purified

Target Details

Target:	SRBD1
---------	-------

Target Details

Alternative Name:	SRBD1 (SRBD1 Products)
Background:	SRBD1 contains 1 S1 motif domain. The exact function of SRBD1 remains unknown. Alias Symbols: FLJ10379 Protein Interaction Partner: UBC, RPA3, RPA2, RPA1, rev, HECW2, TARDBP, CBX7, TAOK1, ELAVL1, SUMO2, USP45, SART3, Protein Size: 995
Molecular Weight:	112 kDa
Gene ID:	55133
NCBI Accession:	NM_018079 , NP_060549
UniProt:	Q8N5C6

Application Details

Application Notes:	Optimal working dilutions should be determined experimentally by the investigator.
Comment:	Antigen size: 995 AA
Restrictions:	For Research Use only

Handling

Format:	Liquid
Concentration:	Lot specific
Buffer:	Liquid. Purified antibody supplied in 1x PBS buffer with 0.09 % (w/v) sodium azide and 2 % sucrose.
Preservative:	Sodium azide
Precaution of Use:	This product contains Sodium azide: a POISONOUS AND HAZARDOUS SUBSTANCE which should be handled by trained staff only.
Handling Advice:	Avoid repeated freeze-thaw cycles.
Storage:	-20 °C
Storage Comment:	For short term use, store at 2-8°C up to 1 week. For long term storage, store at -20°C in small aliquots to prevent freeze-thaw cycles.

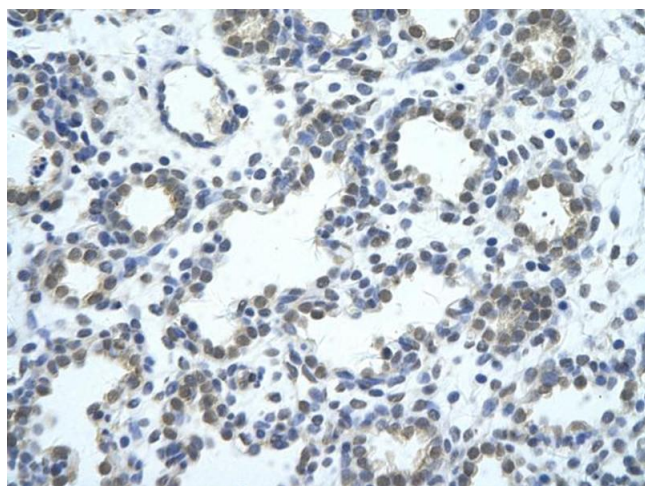


Western Blotting

Image 1. WB Suggested Anti-SRBD1 Antibody Titration: 0.2-1 μ g/ml Positive Control: 721_B cell lysate SRBD1 is supported by BioGPS gene expression data to be expressed in 721_B

Western Blotting

Image 2. WB Suggested Anti-SRBD1 Antibody Titration: 0.2-1 μ g/mL Positive Control: 21_B cell lysate SRBD1 is supported by BioGPS gene expression data to be expressed in 721_B



Immunohistochemistry

Image 3. Rabbit Anti-SRBD1 antibody Paraffin Embedded Tissue: Human Lung cell Cellular Data: alveolar cell Antibody Concentration: 4.0-8.0 μ g/ml Magnification: 400X